

# UCSF

## UC San Francisco Previously Published Works

### Title

Loss and dysfunction of V $\delta$ 2+  $\gamma\delta$  T cells are associated with clinical tolerance to malaria.

### Permalink

<https://escholarship.org/uc/item/0g28z277>

### Journal

Science translational medicine, 6(251)

### ISSN

1946-6242

### Authors

Jagannathan, Prasanna  
Kim, Charlie C  
Greenhouse, Bryan  
[et al.](#)

### Publication Date

2014-08-27

Peer reviewed

## Loss and dysfunction of V $\delta$ 2<sup>+</sup> $\gamma\delta$ T cells is associated with clinical tolerance to malaria

**Authors:** Prasanna Jagannathan<sup>1</sup>, Charlie C. Kim<sup>1</sup>, Bryan Greenhouse<sup>1</sup>, Felistas Nankya<sup>2</sup>, Katherine Bowen<sup>1</sup>, Ijeoma Eccles-James<sup>1</sup>, Mary K Muhindo<sup>2</sup>, Emmanuel Arinaitwe<sup>2</sup>, Jordan W. Tappero<sup>3</sup>, Moses R Kanya<sup>4</sup>, Grant Dorsey<sup>1</sup>, Margaret E. Feeney<sup>1,5\*</sup>

### Affiliations:

<sup>1</sup>Department of Medicine, San Francisco General Hospital, University of California, San Francisco, USA.

<sup>2</sup>Infectious Diseases Research Collaboration, Kampala, Uganda.

<sup>3</sup>Center for Global Health, Centers for Disease Control and Prevention, Atlanta, Georgia, USA.

<sup>4</sup>Department of Medicine, Makerere University College of Health Sciences, Kampala, Uganda.

<sup>5</sup>Department of Pediatrics, University of California, San Francisco, USA.

\*To whom correspondence should be addressed: [margaret.feeney@ucsf.edu](mailto:margaret.feeney@ucsf.edu).

**One Sentence Summary:** Repeated malaria exposure is associated with decreased frequency and function of V $\delta$ 2<sup>+</sup>  $\gamma\delta$  T cells, and loss and dysfunction of this subset is associated with tolerance to *P. falciparum* infection.

**Abstract:** Although clinical immunity to malaria eventually develops among children living in endemic settings, the underlying immunologic mechanisms are not known. The V $\delta$ 2<sup>+</sup> subset of  $\gamma\delta$  T cells possess intrinsic reactivity to malaria antigens, can mediate killing of *P. falciparum* merozoites, and expand markedly *in vivo* following malaria infection in previously naïve hosts, but their role in mediating immunity in children repeatedly exposed to malaria is unclear. We evaluated  $\gamma\delta$  T cell responses to malaria among 4-year-old children enrolled in a longitudinal study in Uganda. We found that repeated malaria was associated with reduced percentages of V $\delta$ 2<sup>+</sup>  $\gamma\delta$  T cells in peripheral blood, decreased proliferation and cytokine production in response to malaria antigens, and increased expression of immunoregulatory genes. Further, loss and dysfunction of pro-inflammatory V $\delta$ 2<sup>+</sup>  $\gamma\delta$  T cells was associated with a reduced likelihood of symptoms upon subsequent *P. falciparum* infection. Together, these results suggest that repeated malaria infection during childhood results in progressive loss and dysfunction of V $\delta$ 2<sup>+</sup>  $\gamma\delta$  T cells that may facilitate immunological tolerance of the parasite.

## Introduction

Children living in endemic settings eventually develop “clinical immunity” to malaria, characterized by a decline in symptomatic malaria episodes and an increasing proportion of *P. falciparum* infections that are asymptomatic. However, the immunologic mechanisms underlying the acquisition of clinical immunity are not known. Because most individuals fail to develop true sterilizing immunity (i.e. protection against parasitemia) and remain vulnerable to asymptomatic parasitemia into adulthood (1), it has been suggested that clinical immunity may be due in part to immune tolerance of the parasite, rather than resulting entirely from an adaptive immune response that effectively protects against *P. falciparum* infection (2, 3).

Several studies have shown that a subset of  $\gamma\delta$  lymphocytes,  $V\gamma 9^+V\delta 2^+$  T cells (also known as  $V\gamma 2^+V\delta 2^+$ ), become rapidly activated upon stimulation with *P. falciparum* antigens during the blood stage of infection (4, 5). These  $V\delta 2^+$  T cells react specifically to phosphoantigens produced by the Plasmodial apicoplast and mediate killing of the invasive blood stage merozoites via release of cytotoxic granules containing granzyme, a process that is TCR-dependent but does not require processing or presentation by professional APCs (6-8).  $V\delta 2^+$  T cells have been shown to expand markedly *in vivo* following malaria infection in previously naïve hosts (9-11), reaching percentages of up to 30% of circulating T cells (5). Following *in vitro* stimulation with *P. falciparum*-infected red blood cells (iRBC),  $V\delta 2^+$  T cells produce IFN $\gamma$  and TNF $\alpha$  and proliferate vigorously (4, 12-15). These findings suggest that  $V\delta 2^+$  T cells may function as an innate-like immune response to malaria that may be important in control of *P. falciparum* infection.

Notably, most prior studies of antimalarial  $\gamma\delta$  T cell function have been performed using cells obtained from malaria-naïve adults and individuals from low-exposure settings; few studies have explored the role of  $V\delta 2^+$  cells in the natural acquisition of immunity to malaria among children residing in highly endemic regions. Two small studies of individuals in malaria endemic settings found no evidence of elevated  $\gamma\delta$  T cell frequencies or *in vivo* expansion following malaria infection (16, 17), raising the possibility that the antimalarial responsiveness of this population may be attenuated in the setting of chronic exposure. Further, although some have suggested that  $\gamma\delta$  T cells play a beneficial role in protection from malaria (18), other data suggest that production of pro-inflammatory cytokines by these cells may be implicated in the pathology of malaria (19, 20). To better understand the role of  $\gamma\delta$  T cells in the development of immunity to malaria, we examined a cohort of children in rural eastern Uganda with heavy year-round exposure to *P. falciparum*. We hypothesized that chronic and repeated malaria exposure may lead to downregulation of the  $V\delta 2^+$  T cell response. Here, we show that  $V\delta 2^+$  cells decline in both number and function following repeated malaria exposure, and that loss of this pro-inflammatory response may be associated with clinical tolerance to malaria.

## Results

### *Study cohort and clinical outcomes*

The study cohort consisted of 78 HIV-uninfected children enrolled prior to one year of age. Complete clinical histories, including documentation of all symptomatic malaria episodes and frequent screening for asymptomatic parasitemia, were available through 5 years of age. The incidence of symptomatic malaria in this cohort was high but variable (5.4 episodes per person year (ppy), IQR 3.2-7.0) and peaked at 25 months of age with a subsequent gradual decline in malaria episodes and a corresponding increase in asymptomatic parasitemia (Fig 1). For this study, blood was drawn from all subjects at four years of age, and again at five years in a longitudinal subset, enabling assessment of  $\gamma\delta$  T cell correlates of both prior malaria exposure and prospective protection. One child had symptomatic malaria (parasitemia with a fever requiring treatment) at the time of the four-year blood draw, and 17 (22%) had blood smears demonstrating parasitemia.

#### *Loss of $V\delta 2^+$ $\gamma\delta^{\text{low}}$ cells in setting of heavy prior malaria*

We measured peripheral blood percentages of  $\gamma\delta$  T cells from all subjects at four years of age, and observed two distinct populations of  $\gamma\delta$  T cells ( $\gamma\delta^{\text{high}}$  and  $\gamma\delta^{\text{low}}$ ) corresponding to the two major  $\gamma\delta$  subsets,  $V\delta 1^+$  and  $V\delta 2^+$  (Fig 2a-c and Sup Fig 1). The majority of  $V\delta 2^+$  T cells expressed the  $V\gamma 9$  chain (median 95%). We noted a striking inverse association between percentages of  $V\delta 2^+$  cells and the prior cumulative incidence of malaria ( $r_s = -0.39$ ,  $P=0.003$ , Fig 2d). A similar relationship was observed between percentages of  $V\delta 2^+$  cells and the total number of prior parasitemic months ( $r_s = -0.41$ ,  $P=0.002$ ,  $n=55$ ). However, there was no significant relationship between  $V\delta 1^+$  T cell percentages (or total  $\gamma\delta$  T cells percentages) and the prior incidence of malaria (Fig 2e, Sup Fig 1c). Despite prior studies describing rapid *in vivo* expansion and high circulating frequencies of  $V\delta 2^+$  cells following infection of malaria-naïve adults (9), we did not observe a significant relationship between  $V\delta 2^+$  T cell percentages and concurrent parasitemia, nor duration since last malaria infection, among these chronically malaria-exposed children.

Based on these results, longitudinal measurements were performed at 5 years of age in a subset of children with particularly high or low malaria exposure between 4 and 5 years of age, in order to test the hypothesis that repeated malaria episodes led to sustained and specific depletion of  $V\delta 2^+$   $\gamma\delta$  T cells from peripheral blood.  $V\delta 2^+$  cell percentages declined significantly among children with  $\geq 8$  intercurrent episodes of symptomatic malaria ppy, in contrast to stable or rising  $V\delta 2^+$  cell percentages among children with 0-1 intercurrent malaria episodes ppy (median fold change 0.68 vs. 1.27, respectively,  $P=0.007$ , Fig 2f and Sup Fig 2). Together these findings suggest that heavy malaria exposure results in the loss of  $V\delta 2^+$   $\gamma\delta$  T cells from peripheral blood.

#### *Dysfunction of $V\delta 2^+$ $\gamma\delta^{\text{low}}$ cells following repeated malaria infection*

We next investigated the functional responsiveness of  $\gamma\delta$  T cells to malaria antigens and its relationship to prior malaria exposure. Prior studies have demonstrated robust proliferation and production of inflammatory cytokines in response to stimulation with malaria parasites among malaria-naïve individuals and those with low prior exposure (4, 9), suggestive of an innate-like immune response. We observed that *in vitro* stimulation with *P. falciparum*-infected red blood cells (iRBCs) resulted in robust, but variable, production of IFN $\gamma$  and TNF, with a subset of these cells co-producing IL2, but no appreciable production of IL17 or IL10 (Fig 3a-b). Most  $\gamma\delta$  T cells responding to iRBC stimulation were of the  $\gamma\delta^{\text{low}}$  subset corresponding to  $V\delta 2^+$  cells (Sup Fig 1a), and were predominantly CD45RA $^-$ , CCR7 $^-$  “effector-memory”-like  $\gamma\delta$  T-cells (21)

though expression of these memory markers did not significantly differ based on prior malaria exposure.

We found that the functional responsiveness of V $\delta$ 2<sup>+</sup>  $\gamma\delta$  T cells to malaria declined in parallel with the quantitative decline in V $\delta$ 2<sup>+</sup> percentages. Malaria-specific production of inflammatory cytokines (IFN $\gamma$  and TNF $\alpha$ ) by  $\gamma\delta^{\text{low}}$  cells was inversely associated with increasing prior malaria incidence ( $r_s = -0.41$ ,  $P=0.0002$ , Fig 3c). A similar relationship was observed between percentages of cytokine-producing  $\gamma\delta^{\text{low}}$  cells and the total number of prior parasitemic months ( $r_s = -0.43$ ,  $P=0.0001$ ,  $n=78$ ). Concurrent parasitemia did not influence the percentage of IFN $\gamma^+$  or TNF $\alpha^+$   $\gamma\delta^{\text{low}}$  cells ( $P=0.69$  and  $0.89$  respectively,  $n=78$ , Wilcoxon rank-sum). As an additional measure of V $\delta$ 2<sup>+</sup>  $\gamma\delta$  T cell function, we assessed proliferation in response to malaria antigen stimulation in a CFSE dilution assay. Again, a strong inverse correlation was observed between V $\delta$ 2<sup>+</sup> T cell proliferation and cumulative prior malaria incidence (Fig 3d-e), suggesting that heavy malaria antigen exposure may result in a proliferative defect in V $\delta$ 2<sup>+</sup> T cells. Together these results indicate that children who have survived repeated clinical malaria episodes exhibit dysfunction as well as loss of V $\delta$ 2<sup>+</sup> cells.

#### *Increased expression of immunoregulatory pathways in V $\delta$ 2<sup>+</sup> T cells from heavily exposed children*

Given the diminished malaria-specific responsiveness of V $\delta$ 2<sup>+</sup> T cells from children with numerous prior malaria episodes, we hypothesized that repeated infection may lead to the upregulation of immunoregulatory pathways that dampen the innate V $\delta$ 2 inflammatory response, as a means of evading host immunopathology. To test this hypothesis, we compared basal gene expression patterns of sorted, unstimulated V $\delta$ 2<sup>+</sup> T cells from children with high ( $\geq 8$  ppy,  $n=4$ ) and low ( $< 2$  ppy,  $n=4$ ) prior malaria incidence using whole transcriptome analysis. We identified 48 differentially expressed genes ( $FDR \leq 0.05$ , fold change  $\geq 2$ , Fig 4a), many with known roles in immunomodulation. For each of these genes, expression was higher among individuals with high prior exposure to malaria. These include: *HAVCR2*, which encodes the receptor Tim-3 (T cell immunoglobulin and mucin domain-containing 3), a cell surface marker that has been implicated in tolerance and exhaustion of Th1 cells (22-26); *FCRL6*, which encodes the ITIM-containing Fc receptor-like protein 6 (27); *LYN*, which negatively regulates BCR signaling through phosphorylation of ITIM-containing receptors (28); *BATF*, a transcription factor upregulated in exhausted CD8<sup>+</sup> T cells (29); and *B3GAT1*, which encodes CD57, a cell surface protein which has been associated with replicative senescence of CD8<sup>+</sup> T cells in the setting of chronic antigen exposure (30). Confirmatory analyses were performed by flow cytometry in children with high or low prior incidence, showing higher Tim3, FcRL6, CD57, and CD16 on V $\delta$ 2<sup>+</sup>  $\gamma\delta$  T cells from children with numerous prior malaria infections (Fig 4b).

We next compared induction of gene expression by sort-purified V $\delta$ 2<sup>+</sup> T cells following 4 hour *in vitro* stimulation with malaria-infected red blood cells (iRBC). In children with  $< 2$  prior episodes ppy ( $n=4$ ), 171 genes were upregulated following *in vitro* stimulation with iRBC (Fig 5a-b). In contrast, only 17 of these genes were upregulated in children with  $\geq 8$  episodes ( $n=3$ , Fig 5a-b). Several of these differentially induced genes encode cytokines, including *IFNG*, *IL2*, *IL3*, *IL4*, *CSF2* (encodes GM-CSF), and *LTA* (Fig 5c). In children with  $\geq 8$  prior episodes ppy, mRNA expression of these cytokine-encoding genes was significantly lower following *in vitro* stimulation in comparison to children with  $< 2$  prior episodes ppy (Fig 5d). Together, these data

strongly suggest that chronic recurrent malaria infection leads to upregulation of immunoregulatory pathways that dampen the immune response.

#### *Loss and dysfunction of V $\delta$ 2<sup>+</sup> T cells associated with clinical immunity to malaria*

Finally, we evaluated the relationship between the frequency and function of V $\delta$ 2<sup>+</sup> T cells and protection from symptomatic malaria, as assessed during one year of prospective observation (age 4-5 years). Percentages of malaria-responsive  $\gamma\delta^{\text{low}}$  T cells were significantly lower in children who experienced at least one episode of asymptomatic infection in the year of follow-up compared to children who developed fever with each subsequent malaria infection ( $P=0.008$ , Fig 6). While children with lower percentages of cytokine-producing  $\gamma\delta^{\text{low}}$  T cells had a higher risk of parasitemia throughout the study (Fig 7a), these highly exposed children had a significantly lower probability of exhibiting symptoms if they became parasitemic during the year of follow-up (OR 0.27,  $P=0.036$ , Fig 7b). This reduced risk of symptoms remained significant after adjusting the analysis for prior or current malaria exposure (OR 0.14, 95% CI 0.04-0.5,  $P=0.0025$ ). Furthermore, children in the lowest tertile of malaria-responsive  $\gamma\delta^{\text{low}}$  T cell responses experienced a significant decline in their overall incidence of symptomatic malaria in the year of follow-up, whereas children in the highest tertile did not experience a decline in the incidence of symptomatic malaria (Fig 7c). Together, these findings suggest that  $\gamma\delta$  T cells do not protect against *P. falciparum* infection, but that with progressive loss of malaria-responsive V $\delta$ 2<sup>+</sup>  $\gamma\delta^{\text{low}}$  T cells there is an increased likelihood that infections will be asymptomatic, consistent with the development of immunologic tolerance to malaria parasites.

#### **Discussion**

Our results demonstrate that, in contrast to the expansion of V $\delta$ 2<sup>+</sup> cells following malaria infection of previously naïve individuals(9-11), repeated malaria exposure is associated with reduced percentages of V $\delta$ 2<sup>+</sup>  $\gamma\delta$  T cells in peripheral blood, decreased proliferation and cytokine production in response to malaria antigens, and increased expression of immunoregulatory genes. Further, in this cohort, loss and dysfunction of pro-inflammatory V $\delta$ 2<sup>+</sup>  $\gamma\delta$  T cells was associated with a reduced likelihood of symptoms upon subsequent *P. falciparum* infection. These findings support the hypothesis that the clinical immunity to malaria observed in young children living in endemic regions may not be mediated entirely by an adaptive immune response to the parasite, but rather, at least in part, by attenuation of the pro-inflammatory response of semi-innate  $\gamma\delta$  T cells resulting in tolerance of *P. falciparum* infection, a hypothesis forwarded in the early 1990s by Goodier et. al. (17).

Our results are consistent with several recent studies indicating that malaria infection results in attenuation of pro-inflammatory responses, as well as dysfunction and/or exhaustion of numerous immune cell subsets, including  $\alpha\beta$  T cells (31-35), B cells (31, 36), and myeloid cells (37). Portugal et. al. recently demonstrated a decrease in iRBC-stimulated expression of genes encoding pro-inflammatory cytokines and chemokines in children after their first malaria infection of the season (3, 19). Because these analyses were performed on bulk unfractionated PBMCs, the cellular subsets responsible for this blunted inflammatory response were not identified. We have previously shown, in the same cohort of children described here, that repeated malaria infection leads to a decline in the frequency of TNF-producing CD4<sup>+</sup> T cells and an expansion of malaria-specific, autoregulating Th1 CD4<sup>+</sup> cells that co-produce IFN $\gamma$  along with IL-10, an anti-inflammatory cytokine(38). Frequencies of IL10-producing CD4<sup>+</sup> T cells were higher in children with current or recent parasitemia(3, 38), but were not associated with

prospective protection from malaria nor with a reduced likelihood of symptoms upon reinfection (38). Thus while several lines of evidence suggest that T cell production of pro-inflammatory cytokines may decrease with prior malaria exposure, these prior studies were not able to demonstrate a relationship with prospective clinical outcomes such as febrile malaria, as we have shown here for V $\delta$ 2<sup>+</sup> T cells. In mice, malaria infection leads to upregulation of the T cell inhibitory receptors PD1 and LAG3 on T cells, resulting in T cell “exhaustion” which contributes to an inability to clear the infection (32, 34). Upregulation of PD1 and LAG-3 on CD4<sup>+</sup> T cells has also been reported in children chronically exposed to malaria (31, 32). However, PD1 and LAG-3 were not differentially expressed by V $\delta$ 2<sup>+</sup> T cells from high and low exposure children in our cohort. Rather, we found that V $\delta$ 2<sup>+</sup>  $\gamma\delta$  T cells upregulate alternate immunomodulatory pathways, such as Tim-3. The fact that  $\gamma\delta$  T cells use distinct immunomodulatory pathways (compared to conventional  $\alpha\beta$  T cells) is perhaps not surprising given the semi-innate role of  $\gamma\delta$  T cells and their frequent co-expression of surface markers conventionally associated with NK cells. In light of our novel observation that loss and dysfunction of V $\delta$ 2<sup>+</sup> cells is associated with a reduced likelihood of symptoms upon subsequent *P. falciparum* infection, such pathways may represent important mechanisms by which repeated malaria infection leads to blunted inflammatory responses by V $\delta$ 2<sup>+</sup> T cells.

As sampling for most assays was performed at a single time point, unmeasured confounders – including genetic, environmental, or other immunologic factors - limit our ability to infer causality from these observations. Nonetheless, the sustained and progressive decline in V $\delta$ 2<sup>+</sup> T cells observed in children with numerous intercurrent malaria episodes, in contrast to stable to rising percentages in those with few or no episodes, strongly support our conclusion that repeated malaria exposure is associated with a loss of V $\delta$ 2<sup>+</sup>  $\gamma\delta$  T cells. While the loss and dysfunction of V $\delta$ 2<sup>+</sup> T cells was statistically associated with the development of asymptomatic infection, it remains to be shown that this cell subset is causally responsible for reduced symptomatology; many immune effector populations are regulated in concert, any of which may contribute to the clinical symptoms (or lack of symptoms) of malaria. Larger prospective studies incorporating longitudinal measurements, as well as careful prospective measures of malaria incidence and exposure, will be needed to further elucidate the relationship between *P. falciparum* exposure,  $\gamma\delta$  T cell function, and clinical immunity to malaria.

Given the intrinsic reactivity of V $\gamma$ 9<sup>+</sup>V $\delta$ 2<sup>+</sup> T cells to *P. falciparum* and their direct anti-merozoite effects *in vitro* (4-6, 8), it is likely that these cells may play a beneficial role as ready-made effectors during primary acute malaria infection of infants (39). However, our data suggest that they do not protect against reinfection or parasitemia, at least in the young children living in this high transmission setting. While the progressive loss and dysfunction of V $\delta$ 2<sup>+</sup>  $\gamma\delta$  T cells is associated with reduced symptoms, it may conceivably interfere with effective clearance of the infection, allowing persistence of parasitemia and propagation of *P. falciparum* to the next host. These findings have important implications in understanding the immunopathogenesis of malaria in childhood, and suggest a novel mechanism of clinical immunity to repeated malaria infection in high incidence settings.

## **Materials and Methods**

### **Ethical approval**

Informed consent was obtained from the parent or guardian of all study participants. The study protocol was approved by the Uganda National Council of Science and Technology and the

institutional review boards of the University of California, San Francisco, Makerere University and the Centers for Disease Control and Prevention.

### **Study site, participants, and clinical outcomes**

Samples for this study were obtained from a subset of children enrolled in the Tororo Child Cohort (TCC) in Tororo, Uganda, a rural district in southeastern Uganda with an entomological inoculation rate (EIR) estimated at 310 infective bites per person year (40). Details of the larger TCC study and eligibility criteria used for enrollment have been previously described (41, 42). The subjects in this report only includes children who were born to HIV-uninfected mothers, further described in (43), and included all children who were still enrolled in the study at the time of blood sampling at 4 years of age (n=78.) Briefly, children were enrolled in infancy (median 5.5 months of age) from the postnatal clinic at Tororo District Hospital, and were eligible for enrollment if they lived within a 30 km radius of the study clinic and agreed to come to the study clinic for all medical care. Children were followed for all medical problems at a dedicated study clinic, with monthly assessments to perform routine blood smears and ensure compliance with study protocols. Children who presented with a documented fever ( $\geq 38.0^{\circ}\text{C}$ ) or history of fever in the previous 24 hours had blood obtained by finger prick for a thick smear. If the thick smear was positive for malaria parasites, the patient was diagnosed with malaria and given artemisinin-based combination therapy. At the time of their first episode of uncomplicated malaria, study participants were randomly assigned to receive open-label artemether-lumefantrine (AL) or dihydroartemisinin-piperaquine (DP). Study participants received the assigned treatment for all subsequent episodes of uncomplicated malaria. Both treatments were shown to be efficacious for treatment of malaria infection (41); treatment with DP was associated with a 15% less risk of malaria over the 5-year period of the study, due to a delayed time to recurrent malaria (42). Children with asymptomatic parasitemia were not provided antimalarial therapy, in accord with local guidelines.

Incident episodes of malaria were defined as all febrile episodes accompanied by any parasitemia requiring treatment, but not preceded by another treatment in the prior 14 days (43). The incidence of malaria was calculated as the number of episodes per person years (ppy) at risk, with prior cumulative incidence defined as the incidence ppy from study enrolment until the time of the blood draw. Asymptomatic parasitemia was defined as a positive routine blood smear in the absence of fever that was not followed by the diagnosis of malaria in the subsequent seven days. The number of parasitemic months was calculated from routine monthly blood smears, regardless of the presence or absence of symptoms. The conditional probability of developing malaria once parasitemic was calculated as a binary outcome (malaria or asymptomatic parasitemia, as defined above) assessed at monthly intervals, in accordance with published methods (44).

### **Sample collection and processing**

At 4 years of age, 6-10 mls of whole blood was obtained from each subject in acid citrate dextrose tubes. In a subset of children (n=12) whole blood was also obtained at 5 years of age. Peripheral blood mononuclear cells (PBMCs) were isolated by density gradient centrifugation (Ficoll-Histopaque; GE Life Sciences). PBMCs were cryopreserved in liquid nitrogen and shipped to our laboratory in San Francisco for evaluation. Analysis of cell viability using Guava Viacount (Millipore) consistently demonstrated >80% viability after thaw.



## **Malaria antigens**

*Plasmodium falciparum* blood-stage 3D7 parasites were grown by standard methods and harvested at 5-10% parasitemia. Red blood cells infected with mature asexual stages (iRBC) were purified magnetically, washed, and cryopreserved in glycerolyte prior to use as previously described(38). Uninfected RBC (uRBC) were used as controls. Schizont extracts (SE) were prepared by 3 freeze-thaw cycles of iRBC in liquid N<sub>2</sub> for freezing and 37°C water bath for thawing, then resuspended in R10 media and stored at -20°C until use.

## **Intracellular Cytokine Staining**

Thawed PBMC were rested overnight in 10% fetal bovine serum (Gibco) and counted prior to stimulation with uRBC, iRBC, media, or phorbol miristate acetate/calcium ionophore (PMA/Io) at 1x10<sup>6</sup> cells/condition. An E:T ratio of 1:3 was used with uRBC and iRBC. Anti-CD28 and – CD49d were added for costimulation (0.5 µg/ml, BD Pharmingen). Brefeldin-A and Monensin (BD Pharmingen) were added at 6 hours of incubation at a final concentration of 10 µg/ml to inhibit cytokine secretion. At 24 hours of incubation, cells were washed, fixed and permeabilized per standard protocols (Invitrogen/Caltag).

Surface and/or intracellular staining of PBMC was done with standard protocols using the following antibodies for the primary analysis: Brilliant violet 650-conjugated CD4, APC anti-γδ (clone B1), Brilliant violet 421-conjugated anti-IL-2 (Biolegend), PerCP–conjugated anti-CD3, APC-H7-conjugated CD8, PE-Cy7-conjugated IFNγ PE-conjugated anti-IL-10, and FITC-conjugated TNFα (BD Pharmingen). Alexa 700-conjugated CD14 and CD19 and Live/dead aqua amine (Invitrogen) were included as exclusion gates to reduce unwanted nonspecific antibody binding when measuring antigen-specific T cell populations. Additional experiments utilized PE-conjugated Vδ2, FITC-conjugated Vδ1, Brilliant violet 605-conjugated CD45RA, FITC-conjugated CCR7, PE-conjugated FCRL6, FITC-conjugated CD57, Pacific blue-conjugated CD16 (Biolegend), and PE-conjugated Tim-3 (R&D).

## **CFSE Proliferation assay**

Thawed PBMC were rested for one hour, washed in 10% Human AB media (Gemini), and 3-6 X 10<sup>6</sup> PBMC were labeled with 1ml of 1.25µM 5,6-carboxyfluorescein diacetate succinimidyl ester (CFSE; Molecular Probes) for seven minutes. CFSE-labeled PBMC were incubated in 96-well, deep-well culture plates (Nunc) at a density of 10<sup>6</sup> PBMC per well at a final volume of 1ml for 7 days. Antigens tested included media, phytohemagglutinin (PHA; 5 µg/mL; Sigma-Aldrich), uRBC, or PfSE at an E:T ratio of 1:3 schizont equivalents. At day 7 cells were treated with 100 units DNase I (Invitrogen) in culture medium at 37°C for 10 min, washed, and stained with surface antibodies (PerCP–conjugated anti-CD3, APC-H7-conjugated CD8 (BD Pharmingen), Brilliant violet 650-conjugated CD4, Alexa 700-conjugated CD14 and CD19, PE-conjugated anti-Vδ2, and APC-conjugated anti-γδ (Biolegend) before acquisition.

## **Cell Sorting**

Thawed PBMC were rested overnight and left unstimulated or stimulated with iRBC for 4 hours. Cells were promptly stained for cell surface markers, and ~1 × 10<sup>4</sup> to 3 × 10<sup>4</sup> cells (>99% pure) were double-sorted directly into RNA lysis buffer (Ambion) with a FACSaria (BD) and stored at -80 until RNA amplification.

### **Flow Cytometry Data Analysis**

Flow cytometry profiles were gated on CD3<sup>+</sup> lymphocytes, and 200,000 to 300,000 events were collected (Figure S2). Samples were analyzed on an LSR2 three laser flow cytometer (Becton Dickinson) with FACSDiva software. Color compensations were performed for each patient's PBMC using beads or samples single stained for each of the fluorochromes used. Data were analyzed using FlowJo (Tree Star) and Pestle (version 1.7)/SPICE (version 5.3; M. Roederer, Vaccine Research Center, National Institute of Allergy and Infectious Diseases, National Institutes of Health). Percentages of iRBC-stimulated cytokine producing  $\gamma\delta$ -T cells (alone or in combination) are reported after background subtraction of the frequency of the identically gated population of cells from the same sample stimulated with control (uRBC). In experiments with CFSE-labeled cells, the percentage of divided  $\gamma\delta^+$  T cells following PfSE stimulation was calculated and reported after subtraction of the percentage of divided  $\gamma\delta^+$  T cells following uRBC-stimulation, using the FlowJo Proliferation Platform.

### **Whole transcriptome microarray analysis:**

RNA was isolated using an RNAqueous Micro kit (Life Technologies) and amplified in two rounds using the Aminoallyl MessageAmp II kit (Life Technologies). Amplified RNA was covalently coupled to Cy3 and hybridized to SurePrint G3 Human Gene Expression 8x60K v2 gene expression microarrays (Agilent) according to the manufacturer's protocol. Arrays were scanned on an Agilent microarray scanner, and raw signal intensities were extracted with Agilent Feature Extraction software.

Raw intensities for 58,717 features represented on the microarray were  $\log_2$  transformed and quantile normalized using the R package limma (45). 38,511 unexpressed probes were removed from the dataset, with expression being defined as a probe having a  $\log_2$  normalized intensity of greater than 7 for all samples within at least one sample group. Expression values for each probe were centered to the median across samples in order to enhance between-sample differences when visualized as heat maps (relative yellow to blue). Differentially expressed genes were identified using Significance Analysis of Microarrays (SAM). For comparisons of unstimulated samples between low and high prior incidence groups, two-class unpaired comparisons were performed. For comparisons of iRBC-stimulated vs. unstimulated samples, paired comparisons were performed. The fold change following stimulation was calculated as the difference in the means of  $\log_2$  gene expression between stimulated and unstimulated samples. A 5% false discovery rate (FDR) and 2-fold change cutoff was observed to identify differentially expressed genes (46).

### **Statistical Methods:**

All statistical analyses were performed using Prism 4.0 (GraphPad), STATA version 12 (College Station), SPICE v.5.3 (NIAID), or R version 3.0.2. We first examined associations between immunologic outcomes with exposure variables including prior cumulative incidence, concurrent parasitemia at the time of the assay, and antimalarial treatment allocation. Comparisons of cellular percentages between groups were performed using the Wilcoxon rank sum test and/or t-test, and the Wilcoxon signed-rank test and/or paired t-test was used to compare paired data. Associations between continuous variables were assessed using Spearman's rank correlation ( $r_s$ ). Concurrent parasitemia and antimalarial treatment assignment did not significantly alter the immunologic assessments reported in this study.

Associations between the absence or presence of any asymptomatic infection during the year of follow-up and percentages of cytokine-producing  $\gamma\delta$  T cells and were made using the Wilcoxon rank sum test, and were conditional on the presence of any parasitemia during this period. 44/47 children with asymptomatic infection during follow-up also had at least one symptomatic infection. Generalized additive models with smoothing splines were used to visualize the effects of age and  $\gamma\delta$  T cell responses on the monthly risk of parasitemia, probability of symptoms if parasitemic, and incidence of malaria (47). Associations between the highest and lowest tertiles of  $\gamma\delta$  T cell responses and the monthly risk of parasitemia, probability of symptoms if parasitemic, and incidence of malaria, stratified by year of age, were evaluated using generalized estimating equations with robust standard errors accounting for repeated measures in the same patient (48). Multivariate models assessing the probability of symptoms if infected in the year following the assay included antimalarial treatment allocation, presence or absence of concurrent parasitemia, and prior malaria exposure, defined as total months with parasite infection. Two-sided p-values were calculated for all test statistics and  $P < 0.05$  was considered significant.

### Supplementary Materials

Fig. S1. Gating strategy and relationship of  $\gamma\delta$  T cell subsets with prior malaria.

Fig. S2. Longitudinal measurements of  $V\delta 2^+$   $\gamma\delta$  T cells in subset of children with high or low malaria exposure.

Table S1. Flow cytometric expression of immunoregulatory proteins identified by whole transcriptome analysis.

Table S2. Microarray-based gene expression fold change analysis of in vitro stimulated purified  $V\delta 2^+$  T cells.

### References and Notes:

1. T. M. Tran, S. Li, S. Doumbo, D. Doumtabe, C. Y. Huang, S. Dia, A. Bathily, J. Sangala, Y. Kone, A. Traore, M. Niangaly, C. Dara, K. Kayentao, A. Ongoiba, O. K. Doumbo, B. Traore, P. D. Crompton, An intensive longitudinal cohort study of Malian children and adults reveals no evidence of acquired immunity to *Plasmodium falciparum* infection. *Clin. Infect. Dis.* **57**, 40-47 (2013).
2. L. Schofield, G. E. Grau, Immunological processes in malaria pathogenesis. *Nat Rev Immunol* **5**, 722-735 (2005).
3. S. Portugal, J. Moebius, J. Skinner, S. Doumbo, D. Doumtabe, Y. Kone, S. Dia, K. Kanakabandi, D. E. Sturdevant, K. Virtaneva, S. F. Porcella, S. Li, O. K. Doumbo, K. Kayentao, A. Ongoiba, B. Traore, P. D. Crompton, Exposure-dependent control of malaria-induced inflammation in children. *PLoS Pathog* **10**, e1004079 (2014).
4. C. Behr, P. Dubois, Preferential expansion of V gamma 9 V delta 2 T cells following stimulation of peripheral blood lymphocytes with extracts of *Plasmodium falciparum*. *Int. Immunol.* **4**, 361-366 (1992).
5. M. Ho, H. K. Webster, P. Tongtawe, K. Pattanapanyasat, W. P. Weidanz, Increased gamma delta T cells in acute *Plasmodium falciparum* malaria. *Immunol. Lett.* **25**, 139-141 (1990).

6. C. Behr, R. Poupot, M. A. Peyrat, Y. Poquet, P. Constant, P. Dubois, M. Bonneville, J. J. Fournie, Plasmodium falciparum stimuli for human gammadelta T cells are related to phosphorylated antigens of mycobacteria. *Infect Immun* **64**, 2892-2896 (1996).
7. M. M. Elloso, H. C. van der Heyde, J. A. vande Waa, D. D. Manning, W. P. Weidanz, Inhibition of Plasmodium falciparum in vitro by human gamma delta T cells. *J Immunol* **153**, 1187-1194 (1994).
8. G. Costa, S. Loizon, M. Guenot, I. Mocan, F. Halary, G. de Saint-Basile, V. Pitard, J. Dechanet-Merville, J. F. Moreau, M. Troye-Blomberg, O. Mercereau-Puijalon, C. Behr, Control of Plasmodium falciparum erythrocytic cycle: gammadelta T cells target the red blood cell-invasive merozoites. *Blood* **118**, 6952-6962 (2011).
9. A. C. Teirlinck, M. B. McCall, M. Roestenberg, A. Scholzen, R. Woestenenk, Q. de Mast, A. J. van der Ven, C. C. Hermsen, A. J. Luty, R. W. Sauerwein, Longevity and composition of cellular immune responses following experimental Plasmodium falciparum malaria infection in humans. *PLoS Pathog* **7**, e1002389 (2011).
10. R. A. Seder, L. J. Chang, M. E. Enama, K. L. Zephir, U. N. Sarwar, I. J. Gordon, L. A. Holman, E. R. James, P. F. Billingsley, A. Gunasekera, A. Richman, S. Chakravarty, A. Manoj, S. Velmurugan, M. Li, A. J. Ruben, T. Li, A. G. Eappen, R. E. Stafford, S. H. Plummer, C. S. Hendel, L. Novik, P. J. Costner, F. H. Mendoza, J. G. Saunders, M. C. Nason, J. H. Richardson, J. Murphy, S. A. Davidson, T. L. Richie, M. Sedegah, A. Sutamihardja, G. A. Fahle, K. E. Lyke, M. B. Laurens, M. Roederer, K. Tewari, J. E. Epstein, B. K. Sim, J. E. Ledgerwood, B. S. Graham, S. L. Hoffman, Protection against malaria by intravenous immunization with a nonreplicating sporozoite vaccine. *Science* **341**, 1359-1365 (2013).
11. C. Roussillon, M. Agrapart, J. J. Ballet, A. Bensussan, T lymphocytes bearing the gamma delta T cell receptor in patients with acute Plasmodium falciparum malaria. *J Infect Dis* **162**, 283-285 (1990).
12. S. M. Jones, M. R. Goodier, J. Langhorne, The response of gamma delta T cells to Plasmodium falciparum is dependent on activated CD4+ T cells and the recognition of MHC class I molecules. *Immunology* **89**, 405-412 (1996).
13. M. C. D'Ombra, D. S. Hansen, K. M. Simpson, L. Schofield, gammadelta-T cells expressing NK receptors predominate over NK cells and conventional T cells in the innate IFN-gamma response to Plasmodium falciparum malaria. *Eur J Immunol* **37**, 1864-1873 (2007).
14. M. R. Goodier, C. Lundqvist, M. L. Hammarstrom, M. Troye-Blomberg, J. Langhorne, Cytokine profiles for human V gamma 9+ T cells stimulated by Plasmodium falciparum. *Parasite Immunol* **17**, 413-423 (1995).
15. J. C. Ribot, A. Debarros, L. Mancio-Silva, A. Pamplona, B. Silva-Santos, B7-CD28 costimulatory signals control the survival and proliferation of murine and human gammadelta T cells via IL-2 production. *J Immunol* **189**, 1202-1208 (2012).
16. L. Hviid, J. A. Kurtzhals, D. Dodoo, O. Rodrigues, A. Ronn, J. O. Commey, F. K. Nkrumah, T. G. Theander, The gamma/delta T-cell response to Plasmodium falciparum malaria in a population in which malaria is endemic. *Infect Immun* **64**, 4359-4362 (1996).
17. M. Goodier, M. Krause-Jauer, A. Sanni, A. Massougbodji, B. C. Sadeler, G. H. Mitchell, M. Modolell, K. Eichmann, J. Langhorne, Gamma delta T cells in the peripheral blood of individuals from an area of holoendemic Plasmodium falciparum transmission. *Trans R Soc Trop Med Hyg* **87**, 692-696 (1993).

18. M. C. D'Ombrain, L. J. Robinson, D. I. Stanistic, J. Taraika, N. Bernard, P. Michon, I. Mueller, L. Schofield, Association of early interferon-gamma production with immunity to clinical malaria: a longitudinal study among Papua New Guinean children. *Clin. Infect. Dis.* **47**, 1380-1387 (2008).
19. D. I. Stanistic, J. Cutts, E. Eriksson, F. J. Fowkes, A. Rosanas-Urgell, P. Siba, M. Laman, T. M. Davis, L. Manning, I. Mueller, L. Schofield, gammadelta T cells and CD14<sup>+</sup> Monocytes Are Predominant Cellular Sources of Cytokines and Chemokines Associated With Severe Malaria. *J Infect Dis*, (2014).
20. J. Langhorne, F. M. Ndungu, A. M. Sponaas, K. Marsh, Immunity to malaria: more questions than answers. *Nat Immunol* **9**, 725-732 (2008).
21. G. Qin, Y. Liu, J. Zheng, Z. Xiang, I. H. Ng, J. S. Malik Peiris, Y. L. Lau, W. Tu, Phenotypic and functional characterization of human gammadelta T-cell subsets in response to influenza A viruses. *J Infect Dis* **205**, 1646-1653 (2012).
22. C. A. Sabatos, S. Chakravarti, E. Cha, A. Schubart, A. Sanchez-Fueyo, X. X. Zheng, A. J. Coyle, T. B. Strom, G. J. Freeman, V. K. Kuchroo, Interaction of Tim-3 and Tim-3 ligand regulates T helper type 1 responses and induction of peripheral tolerance. *Nat Immunol* **4**, 1102-1110 (2003).
23. A. Sanchez-Fueyo, J. Tian, D. Picarella, C. Domenig, X. X. Zheng, C. A. Sabatos, N. Manlongat, O. Bender, T. Kamradt, V. K. Kuchroo, J. C. Gutierrez-Ramos, A. J. Coyle, T. B. Strom, Tim-3 inhibits T helper type 1-mediated auto- and alloimmune responses and promotes immunological tolerance. *Nat Immunol* **4**, 1093-1101 (2003).
24. L. Golden-Mason, B. E. Palmer, N. Kassam, L. Townshend-Bulson, S. Livingston, B. J. McMahon, N. Castelblanco, V. Kuchroo, D. R. Gretch, H. R. Rosen, Negative immune regulator Tim-3 is overexpressed on T cells in hepatitis C virus infection and its blockade rescues dysfunctional CD4<sup>+</sup> and CD8<sup>+</sup> T cells. *J Virol* **83**, 9122-9130 (2009).
25. R. H. McMahan, L. Golden-Mason, M. I. Nishimura, B. J. McMahon, M. Kemper, T. M. Allen, D. R. Gretch, H. R. Rosen, Tim-3 expression on PD-1<sup>+</sup> HCV-specific human CTLs is associated with viral persistence, and its blockade restores hepatocyte-directed in vitro cytotoxicity. *J Clin Invest* **120**, 4546-4557 (2010).
26. R. B. Jones, L. C. Ndhlovu, J. D. Barbour, P. M. Sheth, A. R. Jha, B. R. Long, J. C. Wong, M. Satkunarajah, M. Schweneker, J. M. Chapman, G. Gyenes, B. Vali, M. D. Hycza, F. Y. Yue, C. Kovacs, A. Sassi, M. Loutfy, R. Halpenny, D. Persad, G. Spotts, F. M. Hecht, T. W. Chun, J. M. McCune, R. Kaul, J. M. Rini, D. F. Nixon, M. A. Ostrowski, Tim-3 expression defines a novel population of dysfunctional T cells with highly elevated frequencies in progressive HIV-1 infection. *J Exp Med* **205**, 2763-2779 (2008).
27. T. J. Wilson, R. M. Presti, I. Tassi, E. T. Overton, M. Cella, M. Colonna, FcRL6, a new ITIM-bearing receptor on cytolytic cells, is broadly expressed by lymphocytes following HIV-1 infection. *Blood* **109**, 3786-3793 (2007).
28. Y. Xu, K. W. Harder, N. D. Huntington, M. L. Hibbs, D. M. Tarlinton, Lyn tyrosine kinase: accentuating the positive and the negative. *Immunity* **22**, 9-18 (2005).
29. M. Quigley, F. Pereyra, B. Nilsson, F. Porichis, C. Fonseca, Q. Eichbaum, B. Julg, J. L. Jesneck, K. Brosnahan, S. Imam, K. Russell, I. Toth, A. Piechocka-Trocha, D. Dolfi, J. Angelosanto, A. Crawford, H. Shin, D. S. Kwon, J. Zupkosky, L. Francisco, G. J. Freeman, E. J. Wherry, D. E. Kaufmann, B. D. Walker, B. Ebert, W. N. Haining, Transcriptional analysis of HIV-specific CD8<sup>+</sup> T cells shows that PD-1 inhibits T cell function by upregulating BATF. *Nat Med* **16**, 1147-1151 (2010).

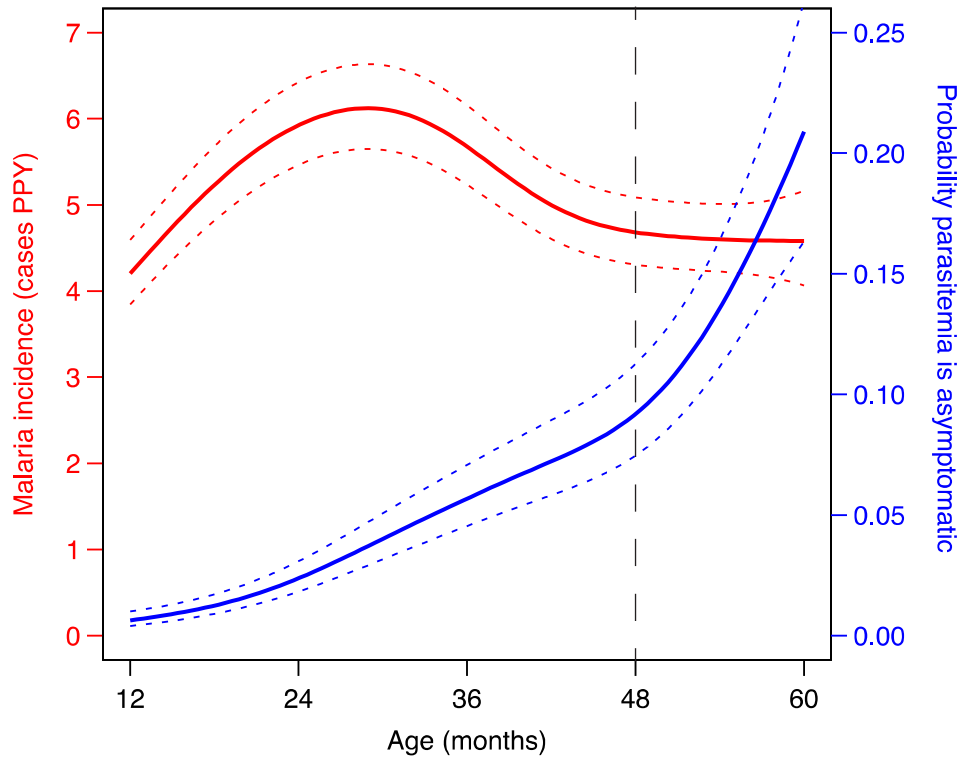
30. J. M. Brechley, N. J. Karandikar, M. R. Betts, D. R. Ambrozak, B. J. Hill, L. E. Crotty, J. P. Casazza, J. Kuruppu, S. A. Migueles, M. Connors, M. Roederer, D. C. Douek, R. A. Koup, Expression of CD57 defines replicative senescence and antigen-induced apoptotic death of CD8<sup>+</sup> T cells. *Blood* **101**, 2711-2720 (2003).
31. J. Illingworth, N. S. Butler, S. Roetynck, J. Mwacharo, S. K. Pierce, P. Bejon, P. D. Crompton, K. Marsh, F. M. Ndungu, Chronic exposure to Plasmodium falciparum is associated with phenotypic evidence of B and T cell exhaustion. *J Immunol* **190**, 1038-1047 (2013).
32. N. S. Butler, J. Moebius, L. L. Pewe, B. Traore, O. K. Doumbo, L. T. Tygrett, T. J. Waldschmidt, P. D. Crompton, J. T. Harty, Therapeutic blockade of PD-L1 and LAG-3 rapidly clears established blood-stage Plasmodium infection. *Nat Immunol* **13**, 188-195 (2012).
33. J. C. Hafalla, C. Claser, K. N. Couper, G. E. Grau, L. Renia, J. B. de Souza, E. M. Riley, The CTLA-4 and PD-1/PD-L1 inhibitory pathways independently regulate host resistance to Plasmodium-induced acute immune pathology. *PLoS Pathog* **8**, e1002504 (2012).
34. J. M. Horne-Debets, R. Faleiro, D. S. Karunaratne, X. Q. Liu, K. E. Lineburg, C. M. Poh, G. M. Grotenbreg, G. R. Hill, K. P. MacDonald, M. F. Good, L. Renia, R. Ahmed, A. H. Sharpe, M. N. Wykes, PD-1 dependent exhaustion of CD8<sup>+</sup> T cells drives chronic malaria. *Cell reports* **5**, 1204-1213 (2013).
35. A. Chandele, P. Mukerjee, G. Das, R. Ahmed, V. S. Chauhan, Phenotypic and functional profiling of malaria-induced CD8 and CD4 T cells during blood-stage infection with Plasmodium yoelii. *Immunology* **132**, 273-286 (2011).
36. G. E. Weiss, P. D. Crompton, S. Li, L. A. Walsh, S. Moir, B. Traore, K. Kayentao, A. Ongoiba, O. K. Doumbo, S. K. Pierce, Atypical memory B cells are greatly expanded in individuals living in a malaria-endemic area. *J Immunol* **183**, 2176-2182 (2009).
37. A. Pinzon-Charry, T. Woodberry, V. Kienzle, V. McPhun, G. Minigo, D. A. Lampah, E. Kenangalem, C. Engwerda, J. A. Lopez, N. M. Anstey, M. F. Good, Apoptosis and dysfunction of blood dendritic cells in patients with falciparum and vivax malaria. *J Exp Med* **210**, 1635-1646 (2013).
38. P. Jagannathan, I. Eccles-James, K. Bowen, F. Nankya, A. Auma, S. Wamala, C. Ebusu, M. K. Muhindo, E. Arinaitwe, J. Briggs, B. Greenhouse, J. W. Tappero, M. R. Kanya, G. Dorsey, M. E. Feeney, IFN $\gamma$ /IL-10 Co-producing Cells Dominate the CD4 Response to Malaria in Highly Exposed Children. *PLoS Pathog* **10**, e1003864 (2014).
39. C. Cairo, N. Longinaker, G. Cappelli, R. G. Leke, M. M. Ondo, R. Djokam, J. Fogako, R. J. Leke, B. Sagnia, S. Sosso, V. Colizzi, C. D. Pauza, Cord Blood V $\gamma$ 2V $\delta$ 2 T Cells Provide a Molecular Marker for the Influence of Pregnancy-Associated Malaria on Neonatal Immunity. *J Infect Dis*, (2014).
40. M. Kilama, D. L. Smith, R. Hutchinson, R. Kigozi, A. Yeka, G. Lavoy, M. R. Kanya, S. G. Staedke, M. J. Donnelly, C. Drakeley, B. Greenhouse, G. Dorsey, S. W. Lindsay, Estimating the annual entomological inoculation rate for Plasmodium falciparum transmitted by Anopheles gambiae s.l. using three sampling methods in three sites in Uganda. *Malar J* **13**, 111 (2014).
41. E. Arinaitwe, T. G. Sandison, H. Wanzira, A. Kakuru, J. Homsy, J. Kalamya, M. R. Kanya, N. Vora, B. Greenhouse, P. J. Rosenthal, J. Tappero, G. Dorsey, Artemether-lumefantrine versus dihydroartemisinin-piperaquine for falciparum malaria: a

- longitudinal, randomized trial in young Ugandan children. *Clin Infect Dis* **49**, 1629-1637 (2009).
42. H. Wanzira, A. Kakuru, E. Arinaitwe, V. Bigira, M. K. Muhindo, M. Conrad, P. J. Rosenthal, M. R. Kamya, J. W. Tappero, G. Dorsey, Longitudinal Outcomes in a Cohort of Ugandan Children Randomized to Artemether-lumefantrine Versus Dihydroartemisinin-piperaquine for the Treatment of Malaria. *Clin. Infect. Dis.*, (2014).
  43. P. Jagannathan, M. K. Muhindo, A. Kakuru, E. Arinaitwe, B. Greenhouse, J. Tappero, P. J. Rosenthal, F. Kaharuza, M. R. Kamya, G. Dorsey, Increasing incidence of malaria in children despite insecticide-treated bed nets and prompt anti-malarial therapy in Tororo, Uganda. *Malar J* **11**, 435 (2012).
  44. B. Greenhouse, B. Ho, A. Hubbard, D. Njama-Meya, D. L. Narum, D. E. Lanar, S. Dutta, P. J. Rosenthal, G. Dorsey, C. C. John, Antibodies to Plasmodium falciparum antigens predict a higher risk of malaria but protection from symptoms once parasitemic. *J Infect Dis* **204**, 19-26 (2011).
  45. G. K. Smyth, T. Speed, Normalization of cDNA microarray data. *Methods* **31**, 265-273 (2003).
  46. V. G. Tusher, R. Tibshirani, G. Chu, Significance analysis of microarrays applied to the ionizing radiation response. *Proc Natl Acad Sci U S A* **98**, 5116-5121 (2001).
  47. T. Hastie, R. Tibshirani, *Generalized additive models*. Monographs on statistics and applied probability 43 (Chapman and Hall, London ; New York, ed. 1st, 1990), pp. xv, 335 p.
  48. S. L. Zeger, K. Y. Liang, Longitudinal data analysis for discrete and continuous outcomes. *Biometrics* **42**, 121-130 (1986).

**Acknowledgements:** We are grateful to all the parents and guardians for kindly giving their consent and to the study participants for their cooperation. We thank all the members of the study team for their tireless effort and excellent work. We also thank P. Rosenthal, J.M. McCune, and M. Boyle for technical support and valuable discussions. **Funding:** Support for this work was provided by the Centers for Disease Control and Prevention (Cooperative Agreement No U62P024421); NIH/NIAID R01AI093615 (MEF), UCSF Centers for AIDS Research (Supplement to MEF, P30AI027763), NIH/NIAID U19AI089674 (GD), NIH/NIAID K23 AI100949 (PJ), Doris Duke Charitable Foundation (clinical scientist development award to BG), and Burroughs Wellcome Fund/American Society of Tropical Medicine and Hygiene (PJ). The findings and conclusions in this paper are those of the authors and do not necessarily represent the views of the Centers for Disease Control and Prevention. **Author Contributions:** P.J. designed, performed, and analyzed all experiments and drafted the paper. C.C.K. designed and analyzed microarray experiments listed in Figs. 5 and 6 and edited the manuscript. B.G. performed regression modeling associated with Figs. 1 and 7, provided statistical guidance for all figures, and edited the manuscript. F.N. coordinated, collected and processed patient samples for all experiments. K.B. performed experiments listed in Figs. 2 and 3. I.E.J. performed experiments listed in Figs. 2 and 3. M.K.M. provided patient care and collected patient data. E.A. enrolled patients, provided patient care, and collected patient data. J.W.T. developed, funded, and coordinated the clinical study. M.R.K. developed, funded, and coordinated the clinical study. G.D. developed, funded, and coordinated the clinical study, and evaluated the statistical analyses reported in figures 1 and 7. M.E.F. designed and coordinated the project, evaluated the data, provided funding for all experiments, and prepared the manuscript. All authors reviewed and approved the manuscript. **Competing Interests:** The authors report no competing interests. **Data and materials availability:** The microarray data have been deposited in the Gene Expression Omnibus under accession number GSE55843.

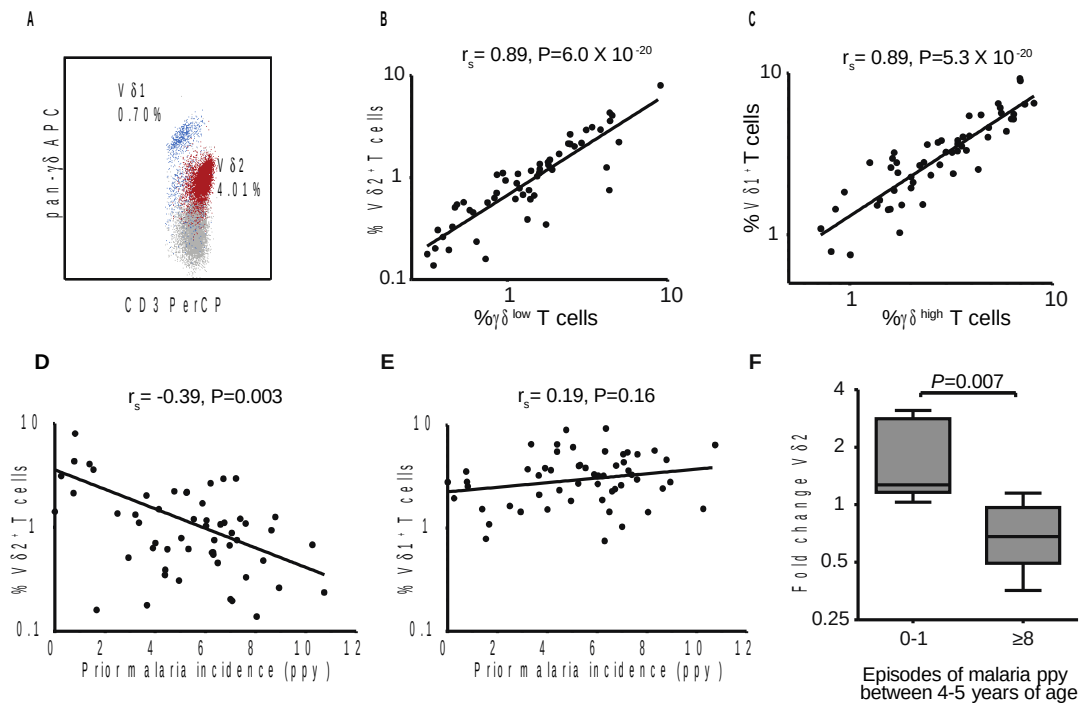


**Fig. #1:**



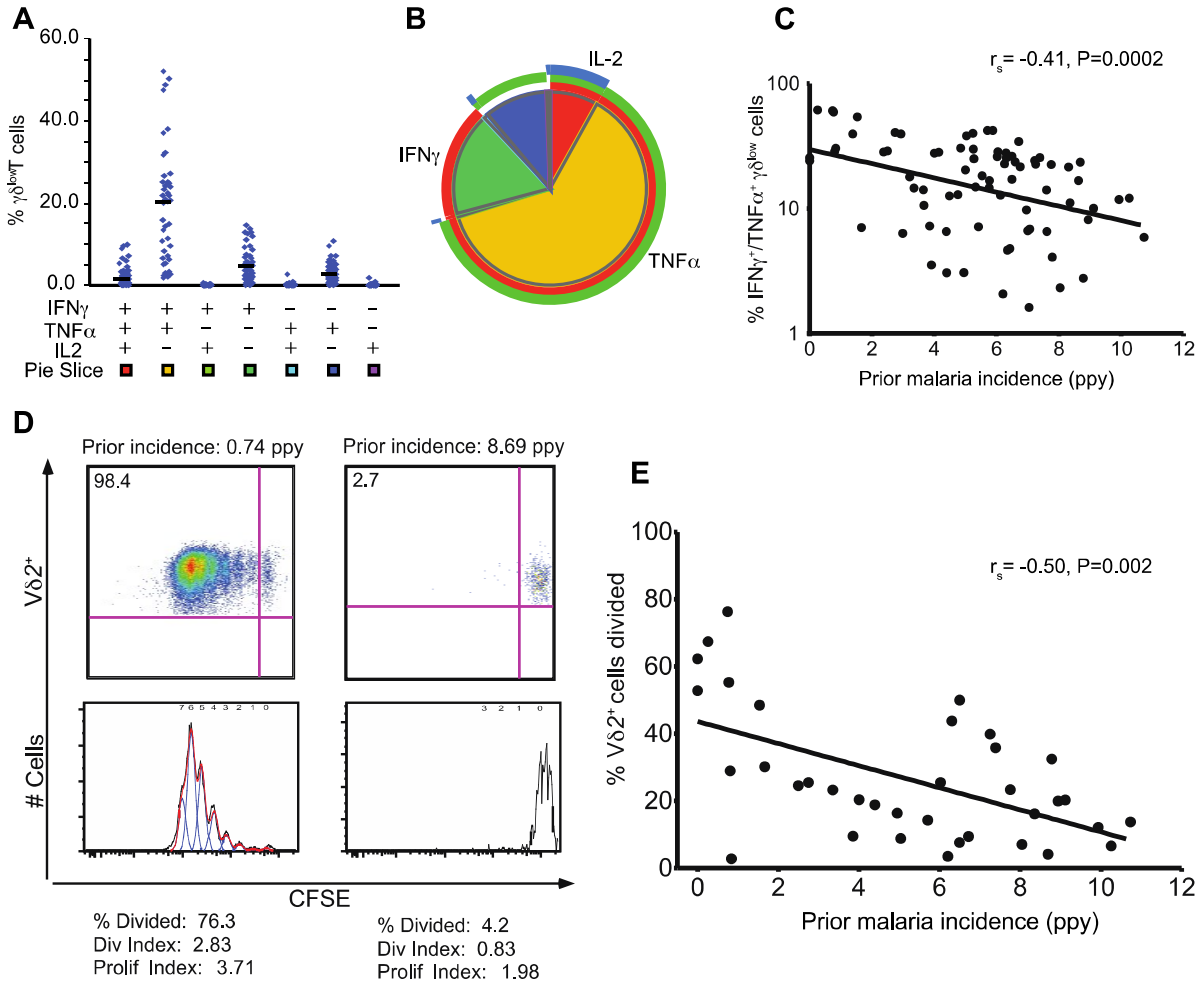
**Fig. 1.** Incidence of malaria (**left y-axis, red line**) and the probability that parasitemia is asymptomatic (**right y-axis, blue line**) from age one to five years (n=78), visualized using a generalized additive model. Standard errors are indicated by the dotted lines. Blood samples for this study were obtained at 48 months of age (hashed vertical line).

**Fig. #2:**



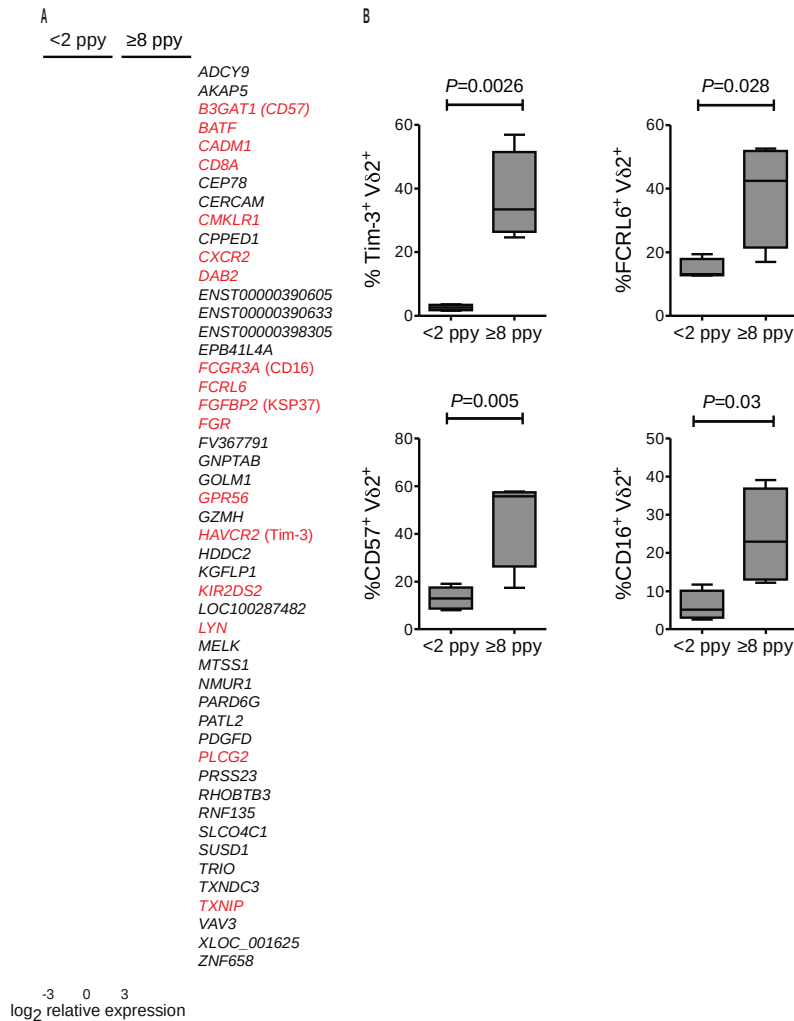
**Fig. 2.** Loss of V $\delta$ 2<sup>+</sup>  $\gamma\delta$ <sup>low</sup> cells in setting of heavy malaria exposure. **(A)** Flow cytometric analysis of live CD3<sup>+</sup>  $\gamma\delta$ <sup>+</sup> T cells labeled with a pan- $\gamma\delta$  antibody revealed two distinct populations of  $\gamma\delta$ <sup>+</sup> T cells, with distinct populations of  $\gamma\delta$ <sup>high</sup> and  $\gamma\delta$ <sup>low</sup> cells. Through co-staining **(A)** and parallel testing **(B-C)** of the pan- $\gamma\delta$  antibody and the predominant V $\delta$ -chains in humans in a subset of patients ( $n=55$ ),  $\gamma\delta$ <sup>low</sup> cells were predominantly V $\delta$ 2<sup>+</sup> and  $\gamma\delta$ <sup>high</sup> cells were predominantly V $\delta$ 1<sup>+</sup>. **(D)** Percentages of V $\delta$ 2<sup>+</sup> T cells are inversely associated with prior malaria incidence. **(E)** No significant association between percentages of V $\delta$ 1<sup>+</sup> T cells and prior malaria incidence.  $r_s$ : Spearman correlation coefficient. ppy=per person year. Solid lines in panels B-E represent best fit regression lines. **(F)** Fold change of V $\delta$ 2<sup>+</sup> T cells between 4-5 years of age in children with either 0-1 episodes or  $\geq 8$  episodes of malaria between 4-5 years of age ( $n=6$  per group, Wilcoxon rank-sum. See Sup Fig 2 for individual data).

**Fig. #3:**



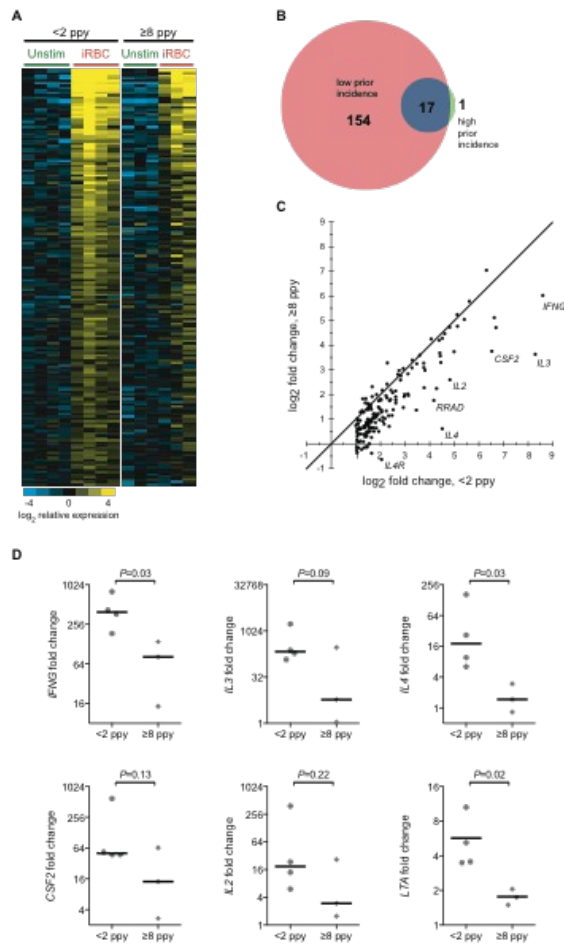
**Fig. 3.** Dysfunction of  $V\delta 2^+ \gamma\delta^{\text{low}}$  cells in setting of heavy prior malaria. Shown are the absolute frequency (**A**) and the relative proportion (**B**) of each individual combination of iRBC-stimulated IFN $\gamma$ , TNF $\alpha$ , or IL-2-producing  $\gamma\delta^{\text{low}}$  T cells. (**C**) Percentages of IFN $\gamma^+$ /TNF $\alpha^+$ -producing  $\gamma\delta^{\text{low}}$  cells are inversely associated with prior malaria incidence (n=78). (**D**) Heavy prior malaria associated with proliferative defect of  $V\delta 2^+$  T cells. Shown is CFSE dilution following 7 days of *P. falciparum* stimulation in one representative sample from a child with low prior incidence (left) and one representative sample from a child with high prior incidence (right). (**E**)  $V\delta 2^+$  proliferation was assessed in a subset of children (n=42) and found to be inversely associated with the prior incidence of malaria.  $r_s$ : Spearman correlation coefficient. ppy=per person year. Solid lines in panels C and E represent best fit regression lines.

**Fig. #4:**



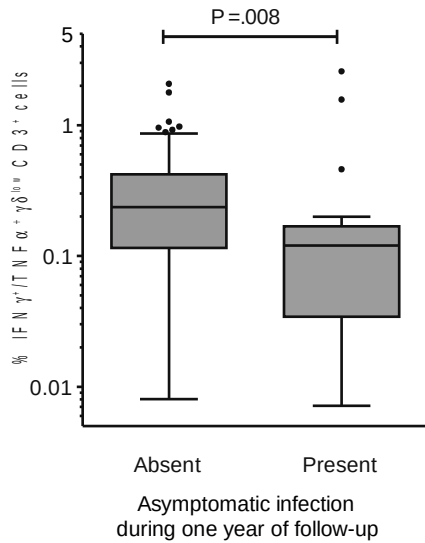
**Fig.4.** Differential gene expression in unstimulated Vδ2<sup>+</sup> T cells from children with low and high prior malaria incidence. **(A)** Whole transcriptome analysis of sort-purified unstimulated Vδ2<sup>+</sup> γδ T cells from children with <2 episodes ppy vs ≥8 episodes ppy (n=4 per group). Differentially expressed genes (determined using a 5% false discovery rate (FDR), fold change ≥ 2 with two-class unpaired comparisons) are depicted as a heat map of relative expression intensities, log<sub>2</sub> normalized to the median expression across all samples for each gene. Yellow represents higher and blue represents lower expression relative to the median; gene names depicted in red represent genes with previously reported roles in tolerance or immunoregulation, with common protein names provided in parentheses following the official gene symbol. **(B)** Flow cytometric analyses confirming increased expression of immunoregulatory proteins in children with high prior malaria incidence. (n=4-5 per group, Wilcoxon rank-sum. See Sup Table 1 for individual data).

**Fig. #5:**



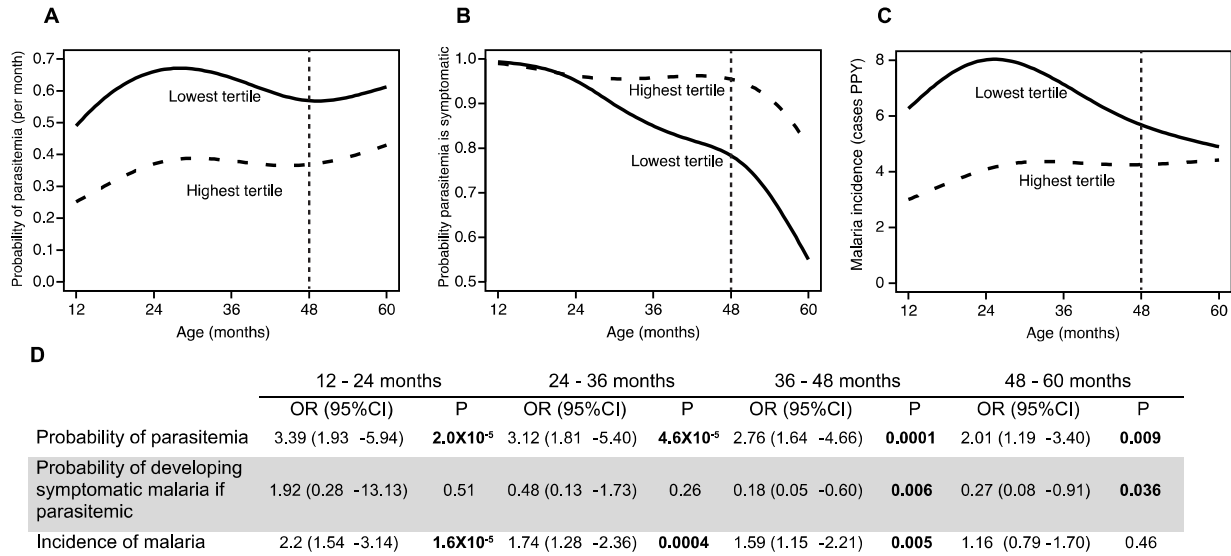
**Fig 5.** Diminished gene induction in  $V\delta 2^+$  T cells following *P. falciparum* stimulation in children with high prior malaria incidence. **(A)** Shown are relative gene expression of significantly induced genes before and after stimulation with iRBCs in children with low prior incidence ( $n=4$ , left set of columns, determined using a 5% FDR, fold change  $\geq 2$  with two-class paired comparisons). Relative  $V\delta 2^+$  gene expression before/after iRBC stimulation in children with high prior incidence shown for comparison ( $n=3$ , right set of columns; one paired sample not analyzed due to amplification failure in stimulated sample). **(B)** Venn diagram showing number of significantly induced genes following iRBC stimulation in low prior incidence and high prior incidence children. The full list of significantly induced genes is available in Sup. Table 2. **(C)** Significantly induced genes from (A) plotted as fold change gene induction (stimulated/ unstimulated) in high prior incidence versus low prior incidence. The identity line ( $m = 1$ ) is shown. The seven genes with the largest residuals from the identity line are labeled. **(D)** Fold change gene induction (stimulated/unstimulated) of  $V\delta 2^+$  T cells of the six most significantly induced cytokines in children with low (left,  $n=4$ ) and high (right,  $n=3$ ) prior incidence. Unpaired t-test used for between group comparisons of  $\log_2$ -transformed fold changes.

**Fig. #6:**



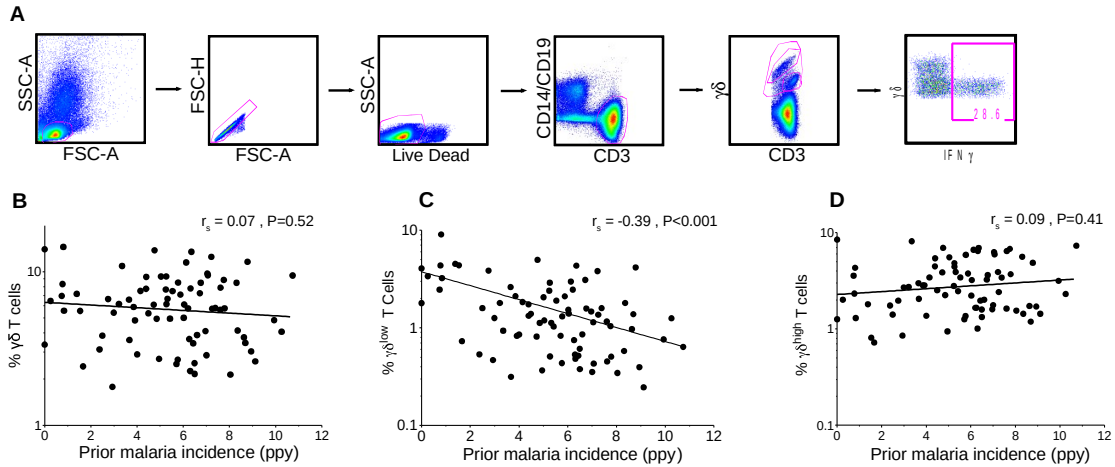
**Fig. 6.** Lower percentages of *P. falciparum*-responsive  $\gamma\delta^{\text{low}}$  T cells in children who later develop asymptomatic infection. Shown are  $\gamma\delta^{\text{low}}$  T cells producing IFN $\gamma^+$ /TNF $\alpha^+$  in response to malaria antigen stimulation, as a proportion of the total CD3<sup>+</sup> T cell population. Subjects are stratified by the absence (n=24) or presence (n=47) of any asymptomatic infection during one year of follow-up, conditional on the presence of any parasitemia during this period (Wilcoxon rank-sum.)

**Fig. #7:**



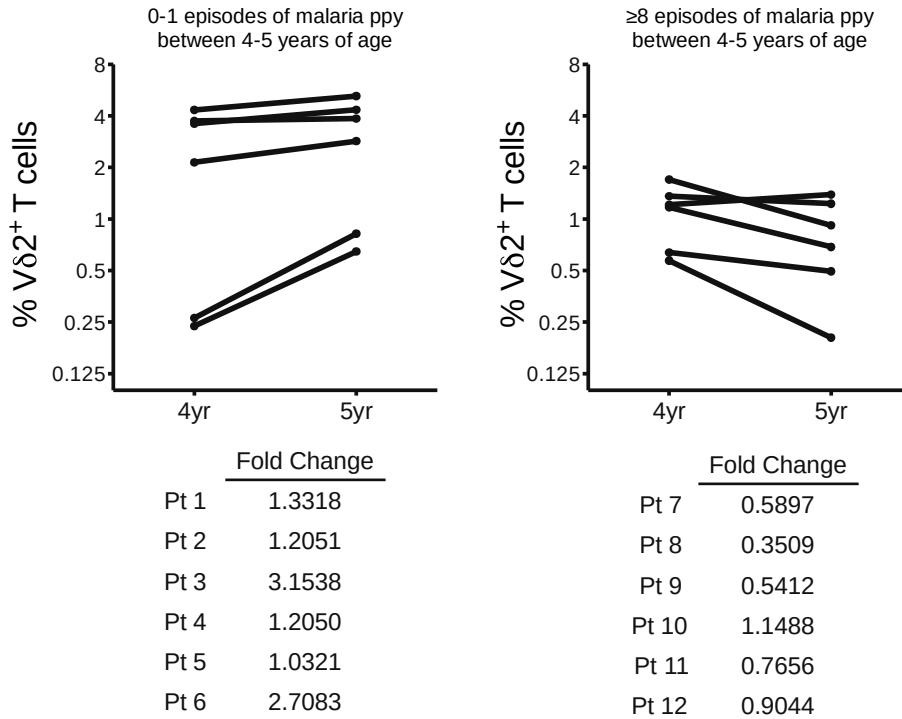
**Fig. 7.** The probability of parasitemia (**A**), probability of developing symptoms if parasitemic (**B**), and incidence of malaria (**C**) by age in children with the highest and lowest tertile percentages of malaria-responsive  $IFN\gamma^+/TNF\alpha^+$ -producing  $\gamma\delta^{low}$  T cells. Vertical dashed lines represent time assay performed. Children in the lowest tertile of  $IFN\gamma^+/TNF\alpha^+$ -producing  $\gamma\delta^{low}$  T cells had a consistently higher monthly probability of parasitemia (**A**), but lower probability of symptoms if parasitemic (**B**). Although children in the lowest tertile had a higher incidence of symptomatic malaria early in the study (**C**), by 48-60 months of age the incidence of symptomatic malaria in the two groups was similar. (**D**) Associations between the lowest vs. highest (reference group) of  $\gamma\delta$ -T cell responses and the monthly risk of parasitemia, probability of developing symptoms if parasitemic, and incidence of malaria, stratified by year of age using generalized estimating equations with robust standard errors. OR: Odds ratio.

**Supplementary Materials:**



**Fig. S1.** Gating strategy and relationship of  $\gamma\delta$  T cell subsets with prior malaria. **(A)** Gating strategy to identify  $\gamma\delta$  T cells. iRBC-responsive  $\gamma\delta$  T cells were uniformly  $\gamma\delta^{\text{low}}$  (far right panel). **(B)** Percentages of  $\gamma\delta^{\text{low}}$  cells are inversely associated with prior malaria incidence. **(C)** No significant association between percentages of  $\gamma\delta^{\text{high}}$  cells and prior malaria incidence. **(D)** No significant association between total frequency of  $\gamma\delta$  T cells and prior malaria incidence.  $r_s$ : Spearman correlation coefficient. ppy=per person year. Solid lines in panels B-D represent best fit regression lines.





**Fig. S2.** Longitudinal measurements of  $V\delta 2^+ \gamma\delta$  T cells at 4 and 5 years of age in a subset of children with high or low malaria exposure. **(A)** Repeat measurements of  $V\delta 2^+$  percentages in children with 0-1 episodes of symptomatic malaria ppy between 4-5 years of age. **(B)** Repeat measurements of  $V\delta 2^+$  percentages in children with  $\geq 8$  episodes of malaria ppy between 4-5 years of age. Tables below figures with fold change  $V\delta 2^+$  percentages (5 yr/4 yr).

**Table S1.** Flow cytometric expression of immunoregulatory proteins identified by whole transcriptome analysis. Listed are percentages of V $\delta$ 2<sup>+</sup>  $\gamma\delta$  T cells expressing Tim-3, FCRL6, CD57, and CD16 in children with <2 or  $\geq$ 8 prior episodes of malaria ppy.

**Table S2.** Microarray-based gene expression fold change analysis of in vitro stimulated purified V $\delta$ 2<sup>+</sup> T cells. Listed are mean fold changes for genes significantly induced in V $\delta$ 2<sup>+</sup> T cells from low and high prior-incidence children after stimulation with iRBCs. Genes listed in black significantly induced in low prior incidence children only; genes in red significantly induced in both low and high prior incidence children; gene in green (ABCA8) significantly induced only in high prior incidence children. Significant genes were identified using Significance Analysis for Microarrays with a 5% false discovery rate and 2-fold change threshold.