

UC Santa Barbara

UC Santa Barbara Previously Published Works

Title

Lipid Membrane Domains Control Actin Network Viscoelasticity.

Permalink

<https://escholarship.org/uc/item/0dg1b73j>

Journal

Langmuir, 40(50)

Authors

Arnold, Daniel

Takatori, Sho

Publication Date

2024-12-17

DOI

10.1021/acs.langmuir.4c03463

Peer reviewed

Lipid Membrane Domains Control Actin Network Viscoelasticity

Daniel P. Arnold and Sho C. Takatori*

Cite This: *Langmuir* 2024, 40, 26570–26578

Read Online

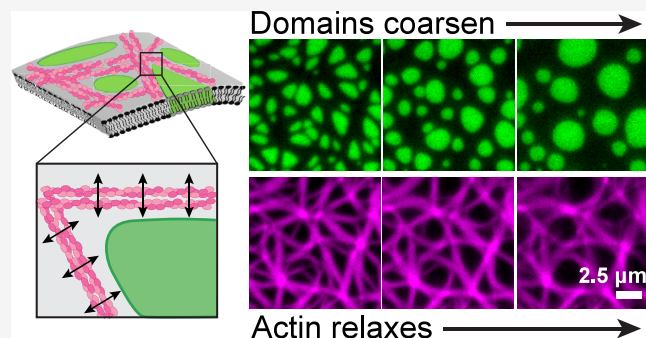
ACCESS |

Metrics & More

Article Recommendations

Supporting Information

ABSTRACT: The mammalian cell membrane is embedded with biomolecular condensates of protein and lipid clusters, which interact with an underlying viscoelastic cytoskeleton network to organize the cell surface and mechanically interact with the extracellular environment. However, the mechanical and thermodynamic interplay between the viscoelastic network and liquid–liquid phase separation of 2-dimensional (2D) lipid condensates remains poorly understood. Here, we engineer materials composed of 2D lipid membrane condensates embedded within a thin viscoelastic actin network. The network generates localized anisotropic stresses that deform lipid condensates into triangular morphologies with sharp edges and corners, shapes unseen in many 3D composite gels. Kinetic coarsening of phase-separating lipid condensates accelerates the viscoelastic relaxation of the network, leading to an effectively softer composite material over intermediate time scales. We dynamically manipulate the membrane composition to control the elastic-to-viscous crossover of the network. Such viscoelastic composite membranes may enable the development of coatings, catalytic surfaces, separation membranes, and other interfaces with tunable spatial organization and plasticity mechanisms.



INTRODUCTION

Lipid bilayer membranes are 2D interfacial materials that elastically resist bending and stretching, but exhibit viscous in-plane behavior.¹ In the mammalian cell, a network of semiflexible actin filaments underlies and applies forces to the plasma membrane, allowing the cell to mechanically interact with its environment.^{2,3} In addition to generating forces orthogonal to the membrane, the cytoskeleton also plays a role in organizing the spatial distribution and movement of protein and lipid clusters on the cell surface.^{4–6}

Reconstituted lipid membranes are often used to study the interactions between heterogeneous membranes and the viscoelastic actin cytoskeleton.^{7–11} Multicomponent lipid membranes can undergo 2D liquid–liquid phase separation at room temperature,¹² and lipid compositions can be tuned to make actin selectively adsorb onto a single phase of the membrane.^{7,8,10,11,13} A dense 2D concentration of filamentous actin can form viscoelastic networks on the membrane that alter the lipid phase behavior,⁸ much like 3D elastic polymer gels, which alter the growth of embedded liquid inclusions.^{14–22} However, unlike most prior 3D solid/liquid composite materials whose steady droplets are much larger than the characteristic mesh size of the polymer network,^{14–21} the mesh sizes of the actin networks are typically 1–10 μm , comparable to the lipid domain size on reconstituted membranes. Thus, unlike prior studies on 3D solid/liquid composites, the 2D lipid domains do not experience continuum-scale interactions with the actin network, and the domains instead adopt highly irregular shapes

as they conform to the network topology.^{7–11,23} Moreover, due to the two-dimensionality of the system, even thin (~ 7 nm) actin filaments form impenetrable barriers that confine the domains without access to the third dimension.⁸

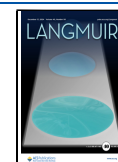
In this article, we present a composite 2D material in which liquid droplets control the viscoelasticity of an adsorbed actin network. Elastic actin bundles are adsorbed to the liquid-disordered (Ld) continuous phase of a two-phase membrane without wetting liquid-ordered (Lo) dispersed domains (Figure 1A). We recently showed that active myosin-driven flows accelerate domain coarsening by 2 \times compared to thermal coarsening in such materials.⁷ Here, we consider the two-way coupling between actin viscoelasticity and the Lo domain morphology and structure in the absence of myosin-driven activity. We find that the rigid actin bundles constrain the domains to adopt angular morphologies, deforming the Lo/Ld interface against line tension. The domains, in turn, accelerate the viscoelastic relaxation of the actin network, decreasing the relaxation time τ by $\sim 2.5\times$. Finally, we rapidly change the chemical composition of the membrane, finding that the network stiffens as the domains grow and providing a tool for

Received: September 3, 2024

Revised: October 22, 2024

Accepted: November 26, 2024

Published: December 4, 2024



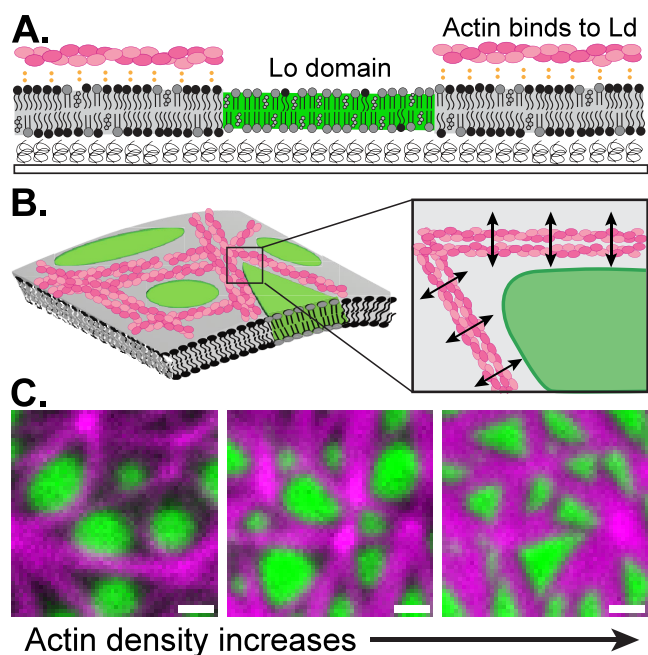


Figure 1. Actin-lipid membrane composite material design. (A) Side view of a reconstituted lipid membrane on a cushioned glass coverslip. At room temperature, the membrane phase-separates into liquid-ordered (Lo, green) domains dispersed in a liquid-disordered (Ld, gray) continuous phase. Filamentous actin (F-actin, magenta) is adsorbed to the Ld phase using electrostatic interactions. (B) (Left) Orthographic projection of composite actin-coated lipid membranes. (Right) Top view of an actin junction near a Lo domain corner. A lipid domain deforms such that the boundary is straighter along an actin bundle and more sharply curved near the intersection of multiple bundles. (C) Top-view micrographs of membranes with varying concentrations of actin (magenta) wetting the Ld phase while avoiding the Lo (green) phase. Actin density increases from left to right, with domains developing sharper corners as actin density increases. Scale bar is 1 μm .

controlling the mechanical properties of 2D composite interfaces.

EXPERIMENTAL METHODS

Buffers. Filamentous actin buffer (F-buffer) consists of 50 mM Tris (pH 7.5), 2 mM magnesium chloride, 0.5 mM adenosine triphosphate (ATP), 0.2 mM calcium chloride, 25 mM potassium chloride, and 1 mM dithiothreitol (DTT). DTT is added to all buffers immediately before use to preserve its reactivity. Assay buffer (A-buffer) consists of 25 mM imidazole (pH 7.4), 4 mM magnesium chloride, 1 mM (ethylene glycol-bis(β -aminoethyl ether)- N,N,N',N' -tetraacetic acid) (EGTA), 25 mM potassium chloride, and 1 mM DTT. Globular actin buffer (G-buffer) consists of 2 mM Tris (pH 8.0), 0.2 mM calcium chloride, 0.5 mM DTT, 1 mM sodium azide, and 0.2 mM ATP.

Actin and Heavy Meromyosin Preparation. Rabbit skeletal muscle actin is purified from muscle acetone powder (Pel-Freez, catalog no: 41995–2, Lot 16743) using standard methods.^{24,25} No rabbits or other animals are directly involved in this study. Actin is stored as depolymerized globular actin (G-actin) at $-80\text{ }^{\circ}\text{C}$ in G-buffer with 6% sucrose until use.

Actin is labeled with fluorescent Alexa Fluor 555 NHS Ester (Succinimidyl Ester) (Invitrogen catalog no: A20009) for microscopic visualization. G-actin is reacted with NHS-Alexa Fluor 555 in HEPES buffer at room temperature for 30 min. 2 \times -concentrated F-buffer is then added to the G-actin so that Tris quenches the NHS reaction and F-buffer causes G-actin to polymerize to F-actin. F-actin polymerization proceeds for 30 min at room temperature, and then overnight at 4 $^{\circ}\text{C}$. Labeled F-actin is centrifuged at 142,000 \times g for 30 min, and the pellet

collected. Unreacted dye and defective G-actin monomers and oligomers that are unable to polymerize are discarded in the supernatant. The labeled F-actin pellet is washed with clean G-buffer, being careful not to disturb the pellet. Labeled F-actin is dissolved in G-buffer, and allowed to depolymerize for 3 days at 4 $^{\circ}\text{C}$ before freezing and storing in 6% sucrose at $-80\text{ }^{\circ}\text{C}$.

Heavy meromyosin (HMM) is purified from rabbit skeletal muscle (Pel-Freez Biologicals, Rogers, Arkansas) using standard methods.²⁶ HMM is frozen in 10 mM potassium phosphate buffer (pH 7.0), 100 mM potassium chloride, 0.3 mM EGTA, 1 mM DTT, and 6% sucrose at $-80\text{ }^{\circ}\text{C}$ until use. In this work, HMM is used solely for surface preparation and substrate cushioning and not as a molecular motor to drive actin motion.

Giant Unilamellar Vesicle (GUV) Preparation. Giant unilamellar vesicles (GUVs) are prepared using the established electroformation method.²⁷ Briefly, lipids are mixed with the following composition: 45.7% 1,2-dioleoyl-*sn*-glycero-3-phosphocholine (DOPC, Avanti catalog no: 850375P), 35% 1,2-dipalmitoyl-*sn*-glycero-3-phosphocholine (DPPC, Avanti catalog no: 850355C), 15% cholesterol (TCI Chemical, catalog no: C3624), 4% 1,2-dioleoyl-3-trimethylammonium-propane (DOTAP, Avanti catalog no: 890890P), and 0.3% 1,2-distearoyl-*sn*-glycero-3-phosphoethanolamine-*N*-[poly(ethylene glycol)2000-*N'*-carboxyfluorescein] (DSPE-PEG2k-FITC, Avanti catalog no: 810120C). This mixture of lipids and cholesterol phase-separates into liquid-ordered (Lo) domains dispersed within a liquid-disordered (Ld) continuous phase. Lipids are spread on an indium tin oxide (ITO)-coated microscope slide (Diamond Coatings, 8–12 Ohm slide) and dried under vacuum for 30 min.

A 2 mm rubber gasket is sandwiched between the ITO-coated slide containing lipids, and a clean ITO-coated slide. The interstitial space is then filled with 75 mM sucrose solution. A sinusoidal electric potential of amplitude 3 V (peak-to-peak) and frequency 10 Hz is applied to the chamber for 1 h at 50 $^{\circ}\text{C}$. After 1 h, the frequency is changed to 2 Hz for 30 min. The resulting GUVs are collected, stored at room temperature and used within 1 day.

Surface Preparation. Glass coverslips No. 1.5 (Azer Scientific) are cleaned with piranha solution (3:1 sulfuric acid:hydrogen peroxide) for 5 min and then washed with deionized water. The coverslips are then made hydrophobic via reaction with trimethylchlorosilane (Sigma-Aldrich) vapors in a vacuum chamber, under house vacuum for 10 min. A 6 mm cylindrical polydimethylsiloxane (PDMS) chamber is attached to the coverslip surface to hold lipids.

Coverslips are incubated with 200 nM heavy meromyosin (HMM) for 6 min. After 6 min, 0.1 mg/mL polylysine-grafted-PEG (PLL-g-PEG) is added and the HMM/PLL-g-PEG solution incubated for another 3 min. The coverslip is then washed, first with A-buffer, and then with Milli-Q water to remove unbound HMM and PLL-g-PEG.

This mixture of HMM and PLL-g-PEG on the coverslip surface helps to cushion the planar lipid bilayer and create space between the membrane and glass. Lipid membrane domains experience frictional interactions with nanoscale roughness when directly supported on uncushioned glass coverslips. Thus, without the cushion of bulky HMM and PEG, lipid domains would experience kinetic arrest and fail to grow beyond the diffraction limit.²⁸ Note that HMM is used solely for substrate cushioning, not to drive actin motion. There is no ATP added to actuate the HMM.

Adsorbing Planar Lipid Bilayer to Treated Coverslip Surface. GUVs in Milli-Q water are added to the actin/HMM-coated coverslip surface. The coverslip is heated to 37 $^{\circ}\text{C}$ for at least 15 min, during which time single-phase GUVs rupture on the treated surface, due to electrostatic attraction between positively charged DOTAP and negatively charged glass. Unbound GUVs are then washed from the coverslip with A-buffer, leaving behind a planar, surface-adsorbed lipid bilayer.

Assembling Actomyosin Cortex on a Lipid Bilayer. Planar lipid bilayers adsorbed to coverslips are incubated in 1 μM F-actin for 10 min at 37 $^{\circ}\text{C}$. F-actin adsorbs uniformly to the bilayer via electrostatic attraction to DOTAP.^{13,29} The membrane is then cooled to room temperature, causing it to phase-separate into liquid-ordered and liquid-disordered phases. The actin then sequesters into the Ld phase.

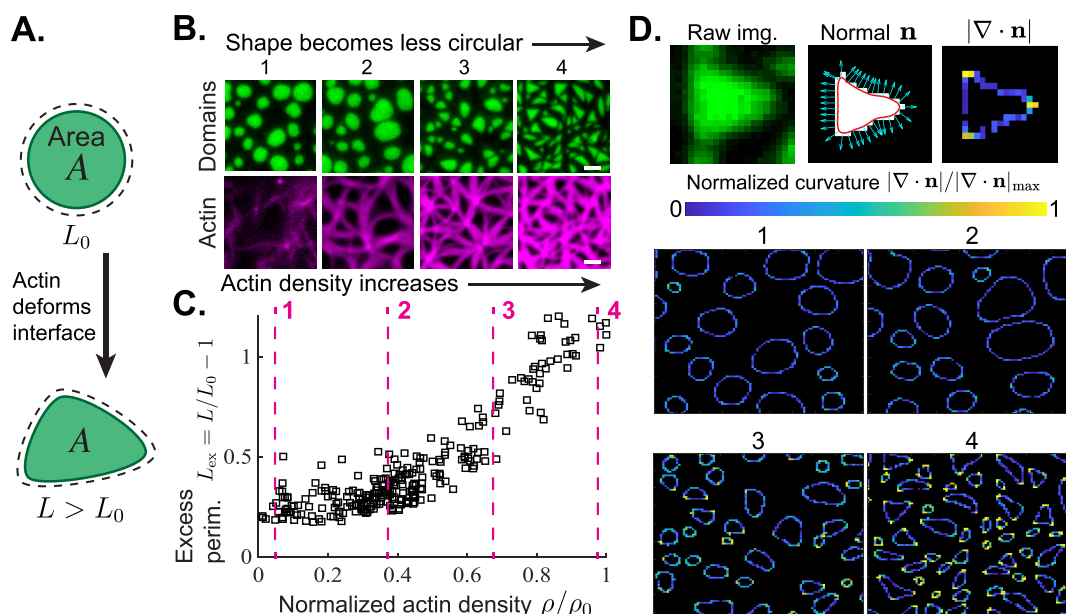


Figure 2. High actin density deforms lipid domain boundaries, increasing the perimeter and anisotropy. (A) In its relaxed state, a liquid ordered (L_0) lipid domain of area A adopts a circular morphology with perimeter L_0 . Interactions with the actin network deforms the domain and its interfacial perimeter increases to $L > L_0$. (B) (*Top row*) Top-view micrographs of a phase-separated lipid membrane with L_0 domains in green and the liquid-disordered (L_d) continuous phase in black. (*Bottom row*) Actin filaments (magenta) are adsorbed to the L_d phase of the lipid bilayer. As actin density increases from left to right, the lipid domains change from a circular morphology to a triangular one. Scale bars are $2.5 \mu\text{m}$. (C) Excess perimeter $L_{\text{ex}} \equiv (L - L_0)/L_0$ of lipid domains is plotted as a function of actin density. Actin density ρ represents mean fluorescence intensity of actin, divided by the available area of the L_d phase, and is normalized by the maximum value sampled ρ_0 . Pink dashed lines with numbers 1–4 correspond to the actin densities in the images in Figure 2B. Scatter plot includes $n = 270$ independent lipid bilayer/actin samples. (D) (*Top*) Local domain curvatures are calculated for images 1–4 in Figure 2B. A raw image of each domain is converted to a binary image, and a parametric curve fit to the domain boundary using smoothing splines. The curvature $\nabla \cdot \mathbf{n}$ is calculated at every point on the fitted curve using the unit normal \mathbf{n} (cyan arrows). (*Bottom*) Heat maps show the large spatial heterogeneity in the local curvature for images 1–4, normalized by the maximum value in image 4, $|\nabla \cdot \mathbf{n}|/|\nabla \cdot \mathbf{n}|_{\text{max}}$. Black pixels indicate zero curvature.

Unbound actin is washed from the coverslip with A-buffer. A complete phase-separated bilayer with actin adsorbed to the L_d phase is shown with uncropped edges in Figure S1.

Inserting Cholesterol into Phase-Separated Membrane Sample. Cholesterol and methyl beta-cyclodextrin ($m\beta\text{CD}$) are combined in a 10:1 (chol: $m\beta\text{CD}$) ratio in Milli-Q water and allowed to dissolve overnight at 50°C . This mixture of cholesterol and $m\beta\text{CD}$ is added to an actin/lipid bilayer sample at a working concentration of $5 \mu\text{M}$ $m\beta\text{CD}$. The $m\beta\text{CD}$ solubilizes cholesterol in water and facilitates cholesterol incorporation into the lipid membrane. Cholesterol incorporation alters the relative amounts of the L_0 and L_d phases until the two phases eventually mix and form a single phase. The membrane/actin sample is regularly imaged during this process.

Preparing and Tracking Tracer Actin. Tracer actin filaments are prepared by polymerizing G-actin labeled with Alexa Fluor 555 in the presence of 100 nM gelsolin (Cytoskeleton, catalog no: HPG6-A *Homo sapiens* recombinant). Gelsolin truncates the resulting F-actin filaments, making them easier to track. Dilute tracer F-actin is combined with full-length F-actin labeled with Alexa Fluor 405, such that the actin mixture contains 0.5% mol G-actin-555. This actin is then added to the lipid bilayer as described above.

Every few minutes, we capture a short series of images (100 total images, 0.2 s between images) of the tracer actin filaments. We track the movement of the tracer filaments using the Trackmate plugin in ImageJ³⁰ and calculate the variance in tracking positions over the 20 s time lapse.

Microscope for All Imaging Experiments. All imaging is carried out on an inverted Nikon Ti2-Eclipse microscope (Nikon Instruments) using an oil-immersion objective (Apo $100\times$, NA 1.45, oil). Lumencor SpectraX Multi-Line LED Light Source is used for excitation (Lumencor, Inc.). Fluorescent light is spectrally filtered with emission filters (432/36, 515/30, 595/31, and 680/42; Semrock, IDEX Health and Science) and imaged on a Photometrics Prime 95 CMOS Camera

(Teledyne Photometrics). Microscope images are collected using MicroManager 1.4 software.³¹

Image Analysis. Actin Density. To find actin density, we first binarize the L_0 domain channel to eliminate areas of the membrane that are inaccessible to actin. We calculate the area available to actin using $A_{\text{actin}} = A_{\text{total}} - A_{L_0}$. We then calculate the average fluorescence intensity of actin and divide it by the available area: $\rho = I_{\text{actin}}/A_{\text{actin}}$.

Domain Perimeter. Domains are binarized using adaptive thresholding. In many cases, binary thresholding merges tightly spaced domains, which will greatly increase the excess perimeter if not corrected. To separate merged domains, we take each binary domain of more than ten pixels in size and check whether it can be easily separated into multiple distinct objects. First, the binarization threshold is increased until only 30% of the original domain pixels remain. The threshold is then iteratively lowered, 2% at a time, and the number of distinct objects greater than 15 pixels in size in the resulting binary image counted. If, after any threshold decrease, the number of binary objects in the image decreases, then the layer of pixels connecting the objects is deleted. This process continues until the original threshold is recovered, effectively severing a single row of pixels between the domains. The perimeter and area of each domain is then measured using the MATLAB Image Processing Toolbox. Finally, we account for any remaining merged domains by removing any significant outliers in L_{ex} as determined by a Grubbs test.

Domain Curvature. We take the binary domains, identified using the method described in the previous section, and fit a parametric curve to the boundary. We initialize the parameter t to have $5 \times$ as many points as the number of edge pixels in the domain. We fit a parametric curve with $(x(t), y(t))$ using smoothing splines in MATLAB. We then calculate the unit normal vector \mathbf{n} at each point in the curve, and find the curvature $\nabla \cdot \mathbf{n}$ using central finite differences. We impose the fitted curve on a grid with the same spacing as the original image, and average

the divergences that overlap with each grid point to produce the heatmap seen in Figure 2D.

Relaxation Time. The relaxation time of the actin network is found using principles of differential dynamic microscopy (DDM), as described previously.^{32,33} The image structure function $D(\mathbf{k}, t)$ is calculated by taking the fast Fourier transform of differences in image intensities I , separated by lag time t :

$$D(k, t) = \text{FFT}[|I(\mathbf{x}, t) - I(\mathbf{x}, 0)|^2] \quad (1)$$

Here $k = |\mathbf{k}|$ is the magnitude of the wave vector, radially averaged over the 2D FFT output, and \mathbf{x} is the spatial position vector. In standard DDM analysis for ergodic systems, $D(k, t)$ is calculated via an ensemble average $\langle \cdot \rangle$ of eq 1. However, as a lipid bilayer with adsorbed actin filaments, our material evolves in a nonergodic fashion,³⁴ and we only consider one trajectory from initial to final state.

We find the intermediate scattering function $F(k, t)$ using the relation:

$$F(k, t) = 1 - \frac{D(k, t) - B(k)}{A(k)} \quad (2)$$

where $A(k)$ and $B(k)$ are time-independent constants. We use the known asymptotic behavior $F(k, t \rightarrow \infty) = 0$ and $F(k, t = 0) = 1$ to find $A(k)$ and $B(k)$, using the relations $A(k) + B(k) = D(k, t \rightarrow \infty)$ and $B(k) = D(k, t = 0)$. We find averaging the first and last few data points that qualitatively display asymptotic behavior to be the most effective way to find $F(k, t)$ in our system. While $F(k, t)$ is exponential in time in most DDM experiments,³² our relaxation data is markedly nonexponential, thus making a two-parameter nonlinear fit for $A(k)$ and $B(k)$ inappropriate. To avoid assuming a functional form for our relaxation data, we also define the relaxation time τ as the half-life of the curve, such that $F(k, \tau) = 0.5$.

Domain and Actin Size. We find the size of lipid domains and actin using the mean wave vector of the static structure factor $S(k)$. To reduce artifacts due to photo bleaching, we first apply histogram-matched bleach correction to the time-lapse in ImageJ.³⁵ We take the 2D fast Fourier transform (FFT) of each image and take the absolute value of the Fourier coefficients to be $S(n) = |\text{FFT}(n)|$ where $n = 0, 1, 2, \dots$ is the Fourier mode. We radially bin $S(n)$ to the nearest integer mode. For example, the first diagonal point $S(n = \sqrt{2})$ would be rounded down to $n = 1$ and averaged with all other coefficients $S(n = 1)$. Fourier modes are converted to wave vectors using the transformation $k = 2\pi n/L$ where L is the image width. Only square images are analyzed, so that $L_x = L_y$, and thus $k_x = k_y$ for $n_x = n_y$.

All Fourier coefficients for high k , corresponding to wavelengths $2\pi/k$ of fewer than five pixels are discarded. Due to photo bleaching, the domain intensity becomes smaller relative to the camera noise after long times (bleach correction cannot remove this artifact). The camera noise is correlated across only a few pixels, so removing high wave vector data eliminates this artifact without affecting the more meaningful actin/domain data, which fluctuates along lower wave vectors. We also remove the lowest wave vector, corresponding to the $n = 0$ mode, as this mode corresponds only to an offset from zero intensity. We find that removing $n = 0$ does not change the trends in our data, but does result in more reasonable values of $\langle k \rangle$, as the $n = 0$ coefficients typically dominate those of all higher modes. We then find the mean wave vector $\langle k \rangle$ using eq 5.

RESULTS AND DISCUSSION

Membrane Composite Material Design. We achieve a planar, phase-separated lipid bilayer by rupturing a giant unilamellar vesicle (GUV) containing 46% 1,2-dioleoyl-*sn*-glycero-3-phosphocholine (DOPC), 35% dipalmitoylphosphatidylcholine (DPPC), 15% cholesterol, 4% 1,2-dioleoyl-3-trimethylammonium propane (DOTAP), and trace 1,2-distearoyl-*sn*-glycero-3-phosphoethanolamine-*N*-[poly(ethylene glycol)2000-*N'*-carboxyfluorescein] (DSPE-PEG2k-FITC, Lo-partitioning fluorescent dye) onto a polymer-cushioned coverslip (see [Experimental Methods](#)), causing the

membrane to spread on the surface (Figure S1). We adsorb filamentous actin (F-actin) to the membrane at 37 °C via electrostatic interactions between negatively charged actin and positively charged DOTAP.^{13,29} Upon cooling to room temperature, the membrane phase-separates, leaving Lo domains dispersed in a continuous Ld phase.¹² Once the Lo domains nucleate amidst the actin network, they completely dewet from actin, excluding it into the Ld phase (Figure 1A-B, Figure S1).

We previously observed this near-total partitioning of actin into the Ld phase in similar experiments,^{7,8} and expect it to be caused in part by the imbalance of charge between the two phases, as DOTAP strongly partitions into the Ld phase.¹⁰ However, simulations have shown that when actin adsorbs electrostatically to a lipid bilayer, the bilayer deforms out-of-plane to wet the actin.¹³ Thus, we expect that the stiffer Lo phase also resists the necessary bending to wet actin, ensuring near-total partitioning into the Ld phase.

The fluorescence micrographs in Figure 1C suggest that the thin $\sim O(\text{nm})$ actin filaments align and cluster to form thick $\sim O(\mu\text{m})$ bundles, as has previously been observed in electrostatically adsorbed actin on lipid membranes.²⁹ We observe that when small amounts of actin are adsorbed to the membrane surface, the thin bundles assemble into a disordered network that avoids and deforms around the domains (Figure 1C, left panel). However, if more actin is allowed to adsorb, the bundles thicken and ultimately span nearly the entire Ld phase (Figure 1C, center and right panels). These thicker bundles interact with the Lo/Ld interface, straightening the domain edges next to and along the bundles, while sharply deforming the domain edges near the intersections of actin bundles (Figure 1B-C).

Actin Elasticity Heterogeneously Deforms Domains.

In its relaxed state, a lipid domain of area A minimizes its perimeter by adopting a circular shape with perimeter $L_0 = 2\sqrt{\pi A}$. Deforming a domain of constant area into a noncircular shape of perimeter $L > L_0$ increases the free energy by $\Delta F = \lambda(L - L_0)$ where λ is the line tension of the Lo/Ld interface (Figure 2A). We define the excess perimeter L_{ex} to be the difference between the domain perimeter and the minimum perimeter of a circle with equivalent area

$$L_{\text{ex}} \equiv \frac{L - L_0}{L_0} = \frac{L}{2\sqrt{\pi A}} - 1 \quad (3)$$

In Figure 2B-C, as the density of adsorbed actin in the Ld phase increases, the excess perimeter of lipid domains increases, corresponding to a shift from circular to triangular morphologies.

We hypothesize that the mechanism by which actin deforms the Lo/Ld domain interface relies on actin's bending rigidity and its tendency to nematically align on the lipid membrane. Heath et al. showed that actin filaments adsorbed electrostatically to Ld-only supported lipid bilayers will align into a liquid crystal-like structure with quasi-long ranged nematic order and periodic filament spacing.²⁹ We polymerize globular actin (G-actin) into F-actin *ex situ*, and then adsorb F-actin to a heated, single-phase membrane. Thus, filaments bind in all orientations and then rotate to form parallel bundles on the fluid surface, subject to limitations due to entanglements and crossovers between filaments.

As the system cools and ages, Lo domains nucleate and grow, excluding the actin filaments into a shrinking Ld continuous phase. We note that actin does not directly contact the Lo

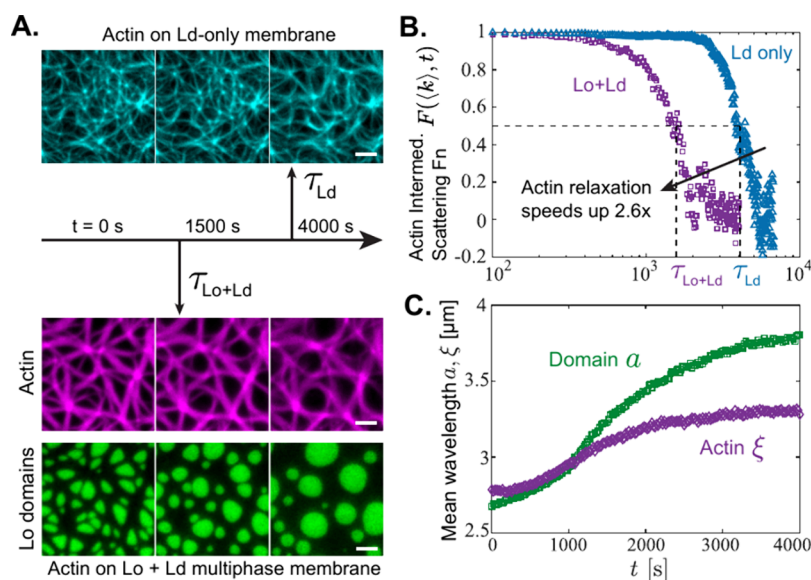


Figure 3. Coarsening lipid domains accelerate the relaxation and aging of viscoelastic actin networks. (A) (*Top*) Fluorescence micrographs show actin (cyan) on a single-phase liquid-disordered (Ld) membrane during a 4000 s time-lapse. (*Bottom*) A separate sample containing actin (magenta) and liquid-ordered (Lo) domains (green) on a two-phase Ld/Lo membrane is also imaged for 4000 s. Relaxation time of the actin network on the two-phase Ld/Lo membrane ($\tau_{\text{Lo+Ld}}$) was 2.6 \times smaller than that on the single-phase Ld membrane (τ_{Ld}). Scale bars are 2.5 μm . (B) The intermediate scattering function $F(k, t)$ is plotted as a function of time t for the mean wave vector $k = \langle k \rangle$ of each sample (see eq 5 for definition of $\langle k \rangle$), for both the two-phase (Lo+Ld) and one-phase (Ld only) samples. The relaxation time τ for each sample is the half-life, $F(\langle k \rangle, \tau) = 0.5$. (C) The mean wavelength of the static structure factor, defined as $a, \xi = 2\pi/\langle k \rangle$, is plotted for both domains a and the actin network ξ . Actin and domains both follow the same qualitative trend during coarsening, with the coarsening rate initially accelerating, before slowing after ~ 1500 s.

domains, but rather is adsorbed atop the Ld phase. Thus, domains cannot pass under actin filaments, but individual lipids from the Lo phase can dissolve into and diffuse through the Ld phase. As Lo domains compress actin into a shrinking Ld area, actin filaments must rotate and diffuse so as to relax steric and electrostatic repulsion between filaments, increasing nematic alignment of bundles. However, the Lo domains simultaneously frustrate actin alignment and relaxation because they are effectively incompressible 2D droplets. Actin bundles separated by Lo domains cannot merge unless the intervening domains completely dissolve into the Ld phase, clearing a path between them. Relaxation is further limited when bundles cross one another and entangle, as seen in the bright magenta spots in Figures 1C and 2B.

Rigid, kinetically frustrated actin bundles deform Lo domains into highly anisotropic shapes and increase the interfacial free energy of the material. Actin has a flexural rigidity $EI = 2 \times 10^{-25} \text{ N} \cdot \text{m}^2$,³⁶ meaning the force necessary to buckle an actin filament of length $L = 1 \mu\text{m}$ is $F_b = \pi EI/L^2 = 1 \text{ pN}$. Phase-separated lipid domains have line tension $\lambda = 1\text{--}10 \text{ pN}$,³⁷ suggesting that small bundles of only a few $1\text{--}10 \mu\text{m}$ filaments will bend around an Lo domain, minimally disturbing the circular interface (Figures 1C and 2B, left panels). Assuming $\sim 20 \text{ nm}$ spacing between filament centers,²⁹ we estimate that the $\sim 1\text{--}2 \mu\text{m}$ actin bundles are $\approx 50\text{--}100$ filaments thick. Thus, at higher actin densities, bundle stiffness dominates line tension, and the domains deform to accommodate the actin bundles (Figure 2C). We note that while the domains are sharply deformed at high actin densities, their total area appears approximately constant, suggesting that while actin filaments can deform domain shape, they are not adsorbed to the Ld phase strongly enough to suppress phase separation.

Previously, micron-sized liquid inclusions were grown in 3D composite materials with nanometer-scale spacing between

elastic polymers.^{14–16,18,38} Thus, the droplets experienced effectively an isotropic elastic stress exerted by a continuum polymer gel. In our 2D material, the actin bundles and Lo domains are both $\sim O(\mu\text{m})$ in size, causing the domains to deform anisotropically in response to actin elasticity. To characterize the anisotropic elastic stresses on domains, we fit parametric curves to the domain boundaries, find the unit normal \mathbf{n} , and calculate the local curvature $\nabla \cdot \mathbf{n}$ along the boundary (Figure 2D). At low actin densities, actin exerts little influence on domain shape, resulting in relatively uniform curvature (Figure 2D, panels 1 and 2). Meanwhile, dense actin bundles elicit large heterogeneity in curvature within each domain boundary, with high curvature concentrating in only a few pointed regions (Figure 2D, panels 3 and 4).

In a quasi-static material with no flows, the curvature can be connected to the elastic stress using a modified Laplace–Young equation:

$$P_{\text{Lo}} - P_{\text{Ld}} = \lambda \nabla \cdot \mathbf{n} + \sigma_{\text{el}} \quad (4)$$

The surface pressures in the Ld (P_{Ld}) and Lo (P_{Lo}) phases have units of force/length, and are balanced by line tension λ and a compressive elastic stress due to actin σ_{el} . While equations of this form are often used in 3D composites,^{19–21} our Lo domains do not contact actin directly, but rather experience elastic stress transmitted through the Ld phase. Thus, we combine σ_{el} and P_{out} into an effective outside pressure, $P_{\text{Ld}}^{\text{eff}} = \sigma_{\text{el}} + P_{\text{out}}$ which simplifies eq 4: $P_{\text{Lo}} - P_{\text{Ld}}^{\text{eff}} = \lambda \nabla \cdot \mathbf{n}$.

In a quasi-static membrane, lipid flows within the purely viscous Lo phase are assumed to be minimal, suggesting that P_{Lo} is spatially invariant within each Lo domain. Thus, the spatial variations in $\nabla \cdot \mathbf{n}$ seen in Figure 2D are balanced by variations in $P_{\text{Ld}}^{\text{eff}}$, which arise due to the actin compressing the domain anisotropically. Previous work has focused only on heterogeneities in matrix stiffness between 3D droplets, with each

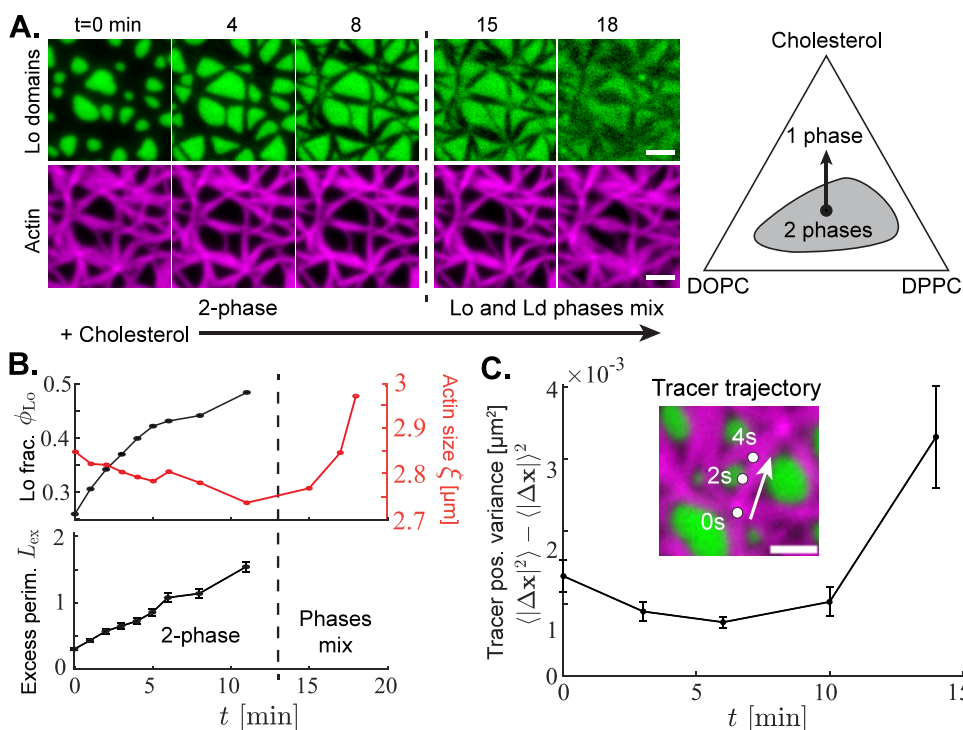


Figure 4. Exogenous cholesterol addition shifts membrane phase equilibrium, changing the mechanical properties of the composite material. (A) Fluorescence micrographs (left) show actin (magenta) adsorbed to a phase-separated lipid membrane with liquid-ordered (Lo, green) domains coexisting with a liquid-disordered (Ld, black) continuous phase. Cholesterol is added to the membrane beginning at time $t = 0$. The ternary phase diagram (right) for a membrane with DOPC, DPPC, and cholesterol shows that the fraction of DPPC-rich Lo phase initially increases while the membrane composition remains in the two-phase region. Eventually, the membrane crosses the binodal curve and enters the one-phase region. This phase change occurs between the 8 and 15 min snapshots on the left. Scale bars are $2.5 \mu\text{m}$. (B) The Lo domain area fraction ϕ_{Lo} , actin mean wavelength ξ , and domain excess perimeter L_{ex} are plotted as a function of time. After the 11 min measurements, the Lo and Ld phases begin to mix, so the domain properties L_{ex} and ϕ_{Lo} become undefined. (C) Dilute tracer filaments are embedded in a more dense actin network, but are labeled with a different fluorescent dye. Over short (<10 s) intervals, the variance in tracer positions $\langle |\Delta\mathbf{x}|^2 \rangle - \langle |\Delta\mathbf{x}| \rangle^2$ is tracked. The mean of $n = 212$ tracer variances is plotted against time since cholesterol addition, with error bars representing the standard error of the mean. Inset shows the position of a tracer among the actin network over a period of 6 s. Scale bar is $2.5 \mu\text{m}$.

droplet still experiencing isotropic compression.¹⁹ We hypothesize that the two-dimensionality of our material, which encourages nematic actin bundling and thus maintains parity between the network and droplet length scales, is responsible for this unusual anisotropic stress concentration. Thus, the actin elasticity dictates the lipid domain architecture, and actin density provides a mechanism of controlling droplet morphology.

Coarsening Lipid Domains Accelerate the Relaxation of Viscoelastic Actin Networks. Actin and lipid domains are two-way coupled: actin controls the domain morphology while the domains themselves control actin viscoelasticity. While the actin network structure remains quasi-static over short time scales of seconds to minutes, the structure slowly relaxes over tens of minutes to hours. In Figure 3A, we consider the actin network structure on both a single-phase Ld membrane (top) and a two-phase Lo/Ld membrane (bottom). Due to the high variability in actin adsorption to the membrane between trials, we present a single representative pair of membranes with similar actin densities. We use differential dynamic microscopy (DDM) to calculate the intermediate scattering function $F(k, t)$ of actin for wave vector magnitude $k = |\mathbf{k}|$ over time t (see Methods).^{32,33} We define the mean wave vector $\langle k \rangle$ of actin in each sample using the static structure factor $S(k)$

$$\langle k \rangle = \frac{\int k S(k) dk}{\int S(k) dk} \quad (5)$$

and plot $F(\langle k \rangle, t)$ in Figure 3B.

Actin network evolves slowly on a single-phase, Ld-only membrane, with a relaxation time $\tau_{\text{Ld}} \approx 4100$ s, where τ is defined as the half-life of the intermediate scattering function: $F(k, \tau) = 0.5$. However, the actin network relaxes more quickly on a two-phase Lo/Ld membrane of similar overall actin density, with $\tau_{\text{Lo} + \text{Ld}} \approx 1600$ s (Figure 3B, Video S1). While $\langle k \rangle$ is $\approx 1 \mu\text{m}^{-1}$ smaller in the single-phase system, the two-phase membrane relaxes faster than the single-phase across many wave vectors (Figure S3). Actin responds elastically to deformations, but is free to diffuse along the 2D fluid membrane, giving the composite membranes with adsorbed actin viscoelastic properties. The $\sim 2.6\times$ acceleration in actin structural relaxation upon adding Lo inclusions to the membrane demonstrates that the domains control the viscoelastic behavior of the material.

This is significant because the relaxation time is a readout of the elastic to viscous crossover of a material. Thus, in reducing the relaxation time, the lipid inclusions accelerate the onset of the viscous behavior of the actin network, making the network effectively softer over these intermediate time scales. This is a key difference with prior work on large 3D droplets immersed in

a small-molecule polymer network,³⁸ where the droplets stiffened the overall composite material.

The images in Figure 3A offer a qualitative explanation of the changing relaxation dynamics: the lipid domains coarsen among the actin network, providing a driving force for relaxation. At early times, we observe coarsening primarily via Ostwald ripening: lipids from small Lo domains dissolve in the Ld phase, and then recondense in larger Lo domains (Video S2). The large domains exclude actin as they grow, while the small domains free up space for actin as they dissolve. At very long times, actin appears to partially unbind from the surface, giving Lo domains more freedom to coalesce (Figure 3A, bottom, Video S2).

The coupling between actin relaxation and lipid domain coarsening becomes apparent when we evolve the mean wavelength of the structure factor a , $\xi = 2\pi/(k)$ of both domains a and actin ξ (Figure 3C). For the first ~ 1500 s, a and ξ nearly overlap, with both growing increasingly quickly as the actin network relaxes and domains coarsen. This acceleration in growth is significant because passive lipid membrane domains grow according to a power law $a \approx t^{1/3}$ with sublinear scaling.^{39,40} Elasticity reduces this scaling in 3D systems as it resists droplet deformation.¹⁹

Here, the growing lipid domains are initially frustrated by actin elasticity, but at longer times, the actin relaxes in response to sustained deformation from the coarsening domains. Similar viscoelastic relaxation has been observed in 3D fibrillar networks, in which coarsening droplets drive sporadic and abrupt plastic deformations in the network architecture.²² At long times, the actin begins to unbind from the membrane, causing ξ to plateau around ~ 2000 s, while the domains continue to coarsen (Figure 3C). The similar unbinding we see in the single-phase case at ~ 4000 s (Video S1) confirms that viscoelastic 2D actin networks will always unbind from membranes at long times, but that the domains drive these dynamics much more rapidly.

Dynamic Modulation of Membrane Composition Drives a Nonmonotonic Shift in Actin Stiffness. We have shown that domain coarsening drives actin relaxation, driven by the thermodynamic driving force of domains to grow and displace actin. However, if the membrane composition is perturbed so that the Lo area fraction increases, then the actin bundles may be constrained into an even smaller area, resulting in network stiffening. We dynamically control membrane composition by introducing methyl beta-cyclodextrin (m β CD)-solubilized cholesterol to the membrane, so that cholesterol incorporates into the inner leaflet.^{41–44}

We observe that the Lo domains grow larger initially because cholesterol inserts preferentially into the Lo phase, consistent with the ternary phase diagram for DOPC, DPPC, and cholesterol developed by Veatch and Keller (Figure 4A).¹² However, after ~ 15 min, the cholesterol concentration exceeds the binodal curve in the phase diagram, and the two phases begin to mix (Figure 4A). We believe that the strong contacts with actin reduce lipid mobility, and are responsible for the relatively slow mixing time scale.

During the initial period of Lo domain growth (first ~ 11 min), the area fraction of Lo phase ϕ_{Lo} increases from approximately 20% to almost 50% (Figure 4B). This compresses the Ld-tethered actin into a much smaller space, narrowing actin bundles and decreasing the mean wavelength ξ (red curve in Figure 4B). As actin is more tightly compressed, its increased elastic forces resist further deformation by the growing Lo

domains. Thus, the domains deform sharply to fill all available space, increasing L_{ex} as sharp corners form (Figure 4B). The dominance of actin elasticity over line tension is magnified by the increasing cholesterol composition, which reduces line tension⁴⁵ and allows L_{ex} to grow beyond that of any sample in Figure 2.

As the actin bundles are compressed by the growing domains, they stiffen and suppress thermal fluctuations of individual filaments. We measure the fluctuations of dilute, short “tracer” actin filaments, which are labeled with a different fluorescent dye so that they can be individually tracked among the bulk actin (Figure S4). The tracers are also truncated with the actin-severing protein gelsolin, to reduce friction and entanglements with other filaments, and to ease tracking (Figure S4). We measure the variance in position $\langle |\Delta x|^2 \rangle - \langle |\Delta x| \rangle^2$ of $n = 212$ – 254 tracer filaments over short, 20-s time-lapses, taken every few minutes during cholesterol addition (Figure 4C, Video S3).

The variance of tracer positions initially decreases as cholesterol is added to the membrane. As the actin bundles are compressed into a smaller area, crowding and friction between filaments limit tracer Brownian motion. Upon adding sufficient cholesterol, the composition exceeds the binodal of the phase diagram (Figure 4A) and the domains mix to form a single liquid phase. As the actin-free Lo areas disappear, the actin bundles begin to spread out to occupy the entire membrane, with ξ increasing well beyond its initial value (Figure 4B). Accordingly, the tracer actin filaments become considerably more mobile as they gain access to an additional $\approx 25\%$ of the membrane, reducing friction and crowding (Figure 4C).

These tracer mobility trends suggest that Lo domains stiffen the 2D composite material, seemingly contradicting our earlier results of network softening via coarsening lipid domains. However, there are key differences between changing the molecular composition of the membrane and allowing domains of constant composition to nucleate and coarsen. In a coarsening membrane, the area fractions of Lo and Ld are constant, and large Lo domains grow by consuming smaller domains. The growing domains exclude actin at the same rate that the shrinking or consumed domains accommodate it. Thus, actin is effectively mixed by the mass-conserved transport of lipids and cholesterol.

Cholesterol addition rapidly grows all Lo domains, large and small, while simultaneously reducing line tension and thus slowing coarsening. The resulting domain growth dominates coarsening, locking actin bundles into their original network structure. As the networks are compressed by the shrinking Ld phase, the material stiffens. An analogous 3D system might have liquid inclusions that dynamically hydrate or dehydrate the surrounding polymer gel, increasing or decreasing its plasticity. Modulating the cholesterol composition provides a mechanism to control the viscoelasticity of our 2D material.

CONCLUSIONS

We present a 2D composite material with lipid domains embedded in a viscoelastic actin matrix, and use these liquid inclusions to tune the viscoelasticity of the material. Unlike prior work on 3D composite gels,^{14–16,38} the characteristic sizes of the actin network and lipid domains are similar, resulting in anisotropic stresses that deform lipid domains away from a circular shape. The 2D nature of our material enhances this effect, as it aligns the actin filaments and prevents domains and filaments from “escaping” into the third dimension to dissipate their stress.

Not only do the actin bundles impose anisotropic morphologies on the domains, but the domains control the viscoelasticity of the actin network. Domain coarsening accelerates actin relaxation, driving an earlier onset of viscous behavior, which effectively softens the material at intermediate shear frequencies. We dynamically control the viscoelasticity of the network by inserting cholesterol into the membrane, manipulating the lipid membrane composition to stiffen or soften the material. These 2D liquid inclusions thus provide a mechanism through which to both stiffen and soften viscoelastic interfaces.

Mammalian cells achieve exceptional plasticity when crawling through complex environments,³ all while constantly deforming, stretching, and organizing their complex plasma membrane. Reconstituted solid/liquid composite membrane materials recapture some of this complexity, and offer the possibility to develop novel interfacial materials with spatiotemporally tunable viscoelastic properties.⁸

■ ASSOCIATED CONTENT

SI Supporting Information

The Supporting Information is available free of charge at <https://pubs.acs.org/doi/10.1021/acs.langmuir.4c03463>.

Note providing additional details on cholesterol insertion into membrane; figure showing margins of composite membrane material; figure showing tracer actin with different fluorescent dyes (PDF)

Video showing actin relaxation on single membrane (MP4)

Video showing actin relaxation on two-phase membrane (MP4)

Video showing actin relaxation with simultaneous domain coarsening, and tracer actin fluctuation (MP4)

■ AUTHOR INFORMATION

Corresponding Author

Sho C. Takatori – Department of Chemical Engineering, University of California, Santa Barbara, Santa Barbara, California 93106, United States; orcid.org/0000-0002-7839-3399; Email: stakatori@stanford.edu

Author

Daniel P. Arnold – Department of Chemical Engineering, University of California, Santa Barbara, Santa Barbara, California 93106, United States; orcid.org/0000-0001-5216-0055

Complete contact information is available at: <https://pubs.acs.org/10.1021/acs.langmuir.4c03463>

Notes

The authors declare no competing financial interest.

■ ACKNOWLEDGMENTS

The authors thank Aakanksha Gubbala for helpful discussions regarding the theory of phase-separation in an elastic medium. This material is based upon work supported by the National Science Foundation under Grant No. 2150686. D.P.A. is supported by the National Science Foundation Graduate Research Fellowship under Grant No. 2139319. S.C.T. is supported by the Packard Fellowship in Science and Engineering.

■ REFERENCES

- (1) Israelachvili, J. N. *Intermolecular and Surface Forces*, 3rd ed.; Elsevier Science, 2011.
- (2) Alberts, B.; Johnson, A.; Lewis, J.; Morgan, D.; Raff, M.; Roberts, K.; Walter, P. *Mol. Biol. Cell*, 6th ed.; W.W. Norton, 2017.
- (3) Phillips, R.; Kondev, J.; Theriot, J. *Physical Biology of the Cell*, 2nd ed.; Garland Science, 2009.
- (4) Kusumi, A.; Sako, Y. Cell surface organization by the membrane skeleton. *Curr. Opin. Cell Biol.* **1996**, *8*, 566–574.
- (5) Fujiwara, T. K.; Iwasawa, K.; Kalay, Z.; Tsunoyama, T. A.; Watanabe, Y.; Umemura, Y. M.; Murakoshi, H.; Suzuki, K. G.; Nemoto, Y. L.; Morone, N.; Kusumi, A. Confined diffusion of transmembrane proteins and lipids induced by the same actin meshwork lining the plasma membrane. *Mol. Biol. Cell* **2016**, *27*, 1101–1119.
- (6) Viola, A.; Gupta, N. Tether and trap: Regulation of membrane-raft dynamics by actin-binding proteins. *Nature Reviews Immunology* **2007**, *7*, 889–896.
- (7) Arnold, D. P.; Gubbala, A.; Takatori, S. C. Active Surface Flows Accelerate the Coarsening of Lipid Membrane Domains. *Phys. Rev. Lett.* **2023**, *131*, 128402.
- (8) Arnold, D. P.; Takatori, S. C. Bio-enabled Engineering of Multifunctional “Living” Surfaces. *ACS Nano* **2023**, *17*, 11077–11086.
- (9) Gubbala, A.; Arnold, D. P.; Jena, A.; Anujararat, S.; Takatori, S. C. Dynamic swarms regulate the morphology and distribution of soft membrane domains. *Phys. Rev. E* **2024**, *110*, 2–7.
- (10) Honigsmann, A.; Sadeghi, S.; Keller, J.; Hell, S. W.; Eggeling, C.; Vink, R. A lipid bound actin meshwork organizes liquid phase separation in model membranes. *eLife* **2014**, *3*, e01671.
- (11) Vogel, S. K.; Greiss, F.; Khmelinskaia, A.; Schwille, P. Control of lipid domain organization by a biomimetic contractile actomyosin cortex. *eLife* **2017**, *6*, 1–16.
- (12) Veatch, S. L.; Keller, S. L. Separation of Liquid Phases in Giant Vesicles of Ternary Mixtures of Phospholipids and Cholesterol. *Biophys. J.* **2003**, *85*, 3074–3083.
- (13) Schroer, C. F. E.; Baldauf, L.; van Buren, L.; Wassenaar, T. A.; Melo, M. N.; Koenderink, G. H.; Marrink, S. J. Charge-dependent interactions of monomeric and filamentous actin with lipid bilayers. *Proc. Natl. Acad. Sci. U. S. A.* **2020**, *117*, 5861–5872.
- (14) Style, R. W.; Sai, T.; Fanelli, N.; Ijavi, M.; Smith-Mannschott, K.; Xu, Q.; Wilen, L. A.; Dufresne, E. R. Liquid-Liquid Phase Separation in an Elastic Network. *Physical Review X* **2018**, *8*, 011028.
- (15) Rosowski, K. A.; Sai, T.; Vidal-Henriquez, E.; Zwicker, D.; Style, R. W.; Dufresne, E. R. Elastic ripening and inhibition of liquid-liquid phase separation. *Nat. Phys.* **2020**, *16*, 422–425.
- (16) Rosowski, K. A.; Vidal-Henriquez, E.; Zwicker, D.; Style, R. W.; Dufresne, E. R. Elastic stresses reverse Ostwald ripening. *Soft Matter* **2020**, *16*, 5892–5897.
- (17) Fernández-Rico, C.; Sai, T.; Sicher, A.; Style, R. W.; Dufresne, E. R. Putting the Squeeze on Phase Separation. *J. Am. Chem. Soc.* **2022**, *144*, 66–73.
- (18) Fernández-Rico, C.; Schreiber, S.; Oudich, H.; Lorenz, C.; Sicher, A.; Sai, T.; Bauernfeind, V.; Heyden, S.; Carrara, P.; Lorenz, L. D.; Style, R. W.; Dufresne, E. R. Elastic microphase separation produces robust bicontinuous materials. *Nat. Mater.* **2024**, *23*, 124–130.
- (19) Meng, L.; Mao, S.; Lin, J. Heterogeneous elasticity drives ripening and controls bursting kinetics of transcriptional condensates. *Proc. Natl. Acad. Sci. U. S. A.* **2024**, *121*, 1–9.
- (20) Vidal-Henriquez, E.; Zwicker, D. Cavitation controls droplet sizes in elastic media. *Proc. Natl. Acad. Sci. U.S.A.* **2021**, *118*, 1–7.
- (21) Wei, X.; Zhou, J.; Wang, Y.; Meng, F. Modeling Elastically Mediated Liquid-Liquid Phase Separation. *Phys. Rev. Lett.* **2020**, *125*, 268001.
- (22) Liu, J. X.; Haataja, M. P.; Košmrlj, A.; Datta, S. S.; Arnold, C. B.; Priestley, R. D. Liquid-liquid phase separation within fibrillar networks. *Nat. Commun.* **2023**, *14*, 6085.
- (23) Lopes dos Santos, R.; Malo, M.; Campillo, C. Spatial Control of Arp2/3-Induced Actin Polymerization on Phase-Separated Giant Unilamellar Vesicles. *ACS Synth. Biol.* **2023**, *12*, 3267–3274.

- (24) Spudich, J. A.; Watt, S. The Regulation of Rabbit Skeletal Muscle Contraction. *J. Biol. Chem.* **1971**, *246*, 4866–4871.
- (25) MacLean-Fletcher, S.; Pollard, T. D. Identification of a factor in conventional muscle actin preparations which inhibits actin filament self-association. *Biochem. Biophys. Res. Commun.* **1980**, *96*, 18–27.
- (26) Margossian, S. S.; Lowey, S. *Methods in Enzymology*; Academic Press, 1982; Vol. 85; pp 55–71.
- (27) Angelova, M. I.; Dimitrov, D. S. Liposome electroformation. *Faraday Discuss. Chem. Soc.* **1986**, *81*, 303.
- (28) Honigsmann, A.; Mueller, V.; Hell, S. W.; Eggeling, C. STED microscopy detects and quantifies liquid phase separation in lipid membranes using a new far-red emitting fluorescent phosphoglycerolipid analogue. *Faraday Discuss.* **2013**, *161*, 77–89.
- (29) Heath, G. R.; Johnson, B. R.; Olmsted, P. D.; Connell, S. D.; Evans, S. D. Actin assembly at model-supported lipid bilayers. *Biophys. J.* **2013**, *105*, 2355–2365.
- (30) Ershov, D.; Phan, M.-S.; Pylvänäinen, J. W.; Rigaud, S. U.; Le Blanc, L.; Charles-Orszag, A.; Conway, J. R. W.; Laine, R. F.; Roy, N. H.; Bonazzi, D.; Duménil, G.; Jacquemet, G.; Tinevez, J.-Y. TrackMate 7: integrating state-of-the-art segmentation algorithms into tracking pipelines. *Nat. Methods* **2022**, *19*, 829–832.
- (31) Edelstein, A. D.; Tsuchida, M. A.; Amodaj, N.; Pinkard, H.; Vale, R. D.; Stuurman, N. Advanced methods of microscope control using μ Manager software. *Journal of Biological Methods* **2014**, *1*, e10.
- (32) Cerbino, R.; Trappe, V. Differential Dynamic Microscopy: Probing Wave Vector Dependent Dynamics with a Microscope. *Phys. Rev. Lett.* **2008**, *100*, 188102.
- (33) Giavazzi, F.; Brogioli, D.; Trappe, V.; Bellini, T.; Cerbino, R. Scattering information obtained by optical microscopy: Differential dynamic microscopy and beyond. *Phys. Rev. E* **2009**, *80*, 031403.
- (34) Weigel, A. V.; Simon, B.; Tamkun, M. M.; Krapf, D. Ergodic and nonergodic processes coexist in the plasma membrane as observed by single-molecule tracking. *Proc. Natl. Acad. Sci. U.S.A.* **2011**, *108*, 6438–6443.
- (35) Miura, K. Bleach correction ImageJ plugin for compensating the photobleaching of time-lapse sequences. *F1000Research* **2020**, *9*, 1494.
- (36) Jacobs, C.; Huang, H.; Kwon, R. *Introduction to Cell Mechanics and Mechanobiology*, 1st ed.; Garland Science: New York, 2012; pp 189–221.
- (37) Tian, A.; Johnson, C.; Wang, W.; Baumgart, T. Line Tension at Fluid Membrane Domain Boundaries Measured by Micropipette Aspiration. *Phys. Rev. Lett.* **2007**, *98*, 208102.
- (38) Style, R. W.; Boltyskiy, R.; Allen, B.; Jensen, K. E.; Foote, H. P.; Wettlaufer, J. S.; Dufresne, E. R. Stiffening solids with liquid inclusions. *Nat. Phys.* **2015**, *11*, 82–87.
- (39) Lifshitz, I. M.; Slyozov, V. V. The kinetics of precipitation from supersaturated solid solutions. *J. Phys. Chem. Solids* **1961**, *19*, 35–50.
- (40) Camley, B. A.; Brown, F. L. H. Dynamic scaling in phase separation kinetics for quasi-two-dimensional membranes. *J. Chem. Phys.* **2011**, *135*, 225106. Publisher: American Institute of Physics.
- (41) Lee, H. R.; Lee, Y.; Oh, S. S.; Choi, S. Q. Ultra-Stable Freestanding Lipid Membrane Array: Direct Visualization of Dynamic Membrane Remodeling with Cholesterol Transport and Enzymatic Reactions. *Small* **2020**, *16*, 2002541 DOI: 10.1002/smll.202002541.
- (42) Ohtani, Y.; Irie, T.; Uekama, K.; Fukunaga, K.; Pitha, J. Differential effects of α -, β - and γ -cyclodextrins on human erythrocytes. *Eur. J. Biochem.* **1989**, *186*, 17–22.
- (43) Klein, U.; Gimpl, G.; Fahrenholz, F. Alteration of the Myometrial Plasma Membrane Cholesterol Content with β -Cyclodextrin Modulates the Binding Affinity of the Oxytocin Receptor. *Biochemistry* **1995**, *34*, 13784–13793.
- (44) Röper, K.; Corbeil, D.; Huttner, W. B. Retention of prominin in microvilli reveals distinct cholesterol-based lipid micro-domains in the apical plasma membrane. *Nat. Cell Biol.* **2000**, *2*, 582–592.
- (45) Tsai, W.-C.; Feigenson, G. W. Lowering line tension with high cholesterol content induces a transition from macroscopic to nanoscopic phase domains in model biomembranes. *Biochimica et Biophysica Acta (BBA) - Biomembranes* **2019**, *1861*, 478–485.