

# UC Davis

## UC Davis Previously Published Works

### Title

Special Issue: Advances in Zintl Phases

### Permalink

<https://escholarship.org/uc/item/0cw3n5b0>

### Journal

Materials, 12(16)

### ISSN

1996-1944

### Author

Kauzlarich, Susan M

### Publication Date

2019

### DOI

10.3390/ma12162554

### Copyright Information

This work is made available under the terms of a Creative Commons Attribution License, available at <https://creativecommons.org/licenses/by/4.0/>

Peer reviewed

Article

# Seebeck and Figure of Merit Enhancement by Rare Earth Doping in $\text{Yb}_{14-x}\text{RE}_x\text{ZnSb}_{11}$ ( $x = 0.5$ )

Elizabeth L. Kunz Wille<sup>1</sup>, Navtej S. Grewal<sup>1</sup>, Sabah K. Bux<sup>2</sup> and Susan M. Kauzlarich<sup>1\*</sup>

<sup>1</sup> Department of Chemistry, University of California, Davis, One Shields Avenue, Davis, CA 95616, USA; ewille@ucdavis.edu (E.L.K.W.); nsggrewal@ucdavis.edu (N.S.G.)

<sup>2</sup> Jet Propulsion Laboratory, California Institute of Technology, 4800 Oak Grove Drive, Pasadena, CA 91109, USA; Sabah.K.Bux@jpl.nasa.gov

\* Correspondence: smkauzlarich@ucdavis.edu; Tel.: 1-530-752-4756

Received: 1 February 2019; Accepted: 25 February 2019; Published: date

**Abstract:**  $\text{Yb}_{14}\text{ZnSb}_{11}$  has been of interest for its intermediate valency and possible Kondo designation. It is one of the few transition metal compounds of the  $\text{Ca}_{14}\text{AlSb}_{11}$  structure type that show metallic behavior. While the solid solution of  $\text{Yb}_{14}\text{Mn}_{1-x}\text{Zn}_x\text{Sb}_{11}$  shows an improvement in the high temperature figure of merit of about 10% over  $\text{Yb}_{14}\text{MnSb}_{11}$ , there has been no investigation of optimization of the Zn containing phase. In an effort to expand the possible high temperature p-type thermoelectric materials with this structure type, the rare earth (RE) containing solid solution  $\text{Yb}_{14-x}\text{RE}_x\text{ZnSb}_{11}$  (RE = Y, La) was investigated. The substitution of a small amount of 3+ rare earth (RE) for  $\text{Yb}^{2+}$  was employed as a means of optimizing  $\text{Yb}_{14}\text{MnSb}_{11}$  for use as a thermoelectric material.  $\text{Yb}_{14}\text{ZnSb}_{11}$  is considered an intermediate valence Kondo system where some percentage of the Yb is formally 3+ and undergoes a reduction to 2+ at ~85 K. The substitution of a 3+ RE element could either replace the  $\text{Yb}^{3+}$  or add to the total amount of 3+ RE and provides changes to the electronic states. RE = Y, La were chosen as they represent the two extremes in size as substitutions for Yb: a similar and much larger size RE, respectively, compared with  $\text{Yb}^{3+}$ . The composition  $x = 0.5$  was chosen as that is the typical amount of RE element that can be substituted into  $\text{Yb}_{14}\text{MnSb}_{11}$ . These two new RE containing compositions show a significant improvement in Seebeck while decreasing thermal conductivity. The addition of RE increases the melting point of  $\text{Yb}_{14}\text{ZnSb}_{11}$  so that the transport data from 300 K to 1275 K can be collected. The figure of merit is increased five times over that of  $\text{Yb}_{14}\text{ZnSb}_{11}$  and provides a  $zT \sim 0.7$  at 1275 K.

**Keywords:** thermoelectric; Seebeck;  $\text{Yb}_{14}\text{MnSb}_{11}$ ; intermetallic; intermediate valence; valence fluctuation

## 1. Introduction

Compounds of the  $\text{Ca}_{14}\text{AlSb}_{11}$  (14-1-11) structure type have been shown to exhibit high thermoelectric figure of merit,  $zT$ , at high temperatures [1–4]. While  $\text{Yb}_{14}\text{MnSb}_{11}$  and  $\text{Yb}_{14}\text{MgSb}_{11}$  members of this group have been high achievers in this area [5,6], the more metallic  $\text{Yb}_{14}\text{ZnSb}_{11}$  has never been considered a good thermoelectric material because of its low Seebeck coefficient ( $\alpha$ ) and, therefore, low  $zT$ , as it scales with  $\alpha^2$  [7,8]. However, the low electrical resistivity that it possesses is an attractive feature, and prior work sought to tap into this by forming a solid solution of Zn with Mn, which resulted in improved  $zT$  compared with  $\text{Yb}_{14}\text{MnSb}_{11}$  [9].  $\text{Yb}_{14}\text{ZnSb}_{11}$  has a smaller unit cell and possesses a lower decomposition temperature than those of its Mn and Mg counterparts; the latter property further dashing hopes for its use in high temperature TE devices.  $\text{Yb}_{14}\text{ZnSb}_{11}$  is unique amongst the members of the 14-1-11 family in that it exhibits Curie-Weiss behavior equivalent to about 0.75  $\text{Yb}^{3+}$  from 300 K to 100 K and a broad maximum in magnetic susceptibility at around 85 K

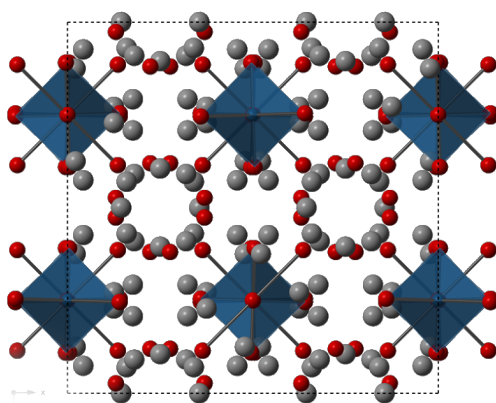
**Commented [AZ1]:** Please carefully check the accuracy of names and affiliations. Changes will not be possible after proofreading.

**Commented [AZ2]:** Please provide your telephone.

**Commented [Office3]:** Please check.

that drops as temperature is lowered, followed by a sharp increase at 20 K. The fact that there is not a simple integral amount of  $\text{Yb}^{3+}$  is consistent with an “intermediate valence”. The broad maximum is interpreted as a fluctuation between the  $f^{13}$  (3+) and  $f^{14}$  (2+) electronic configurations of Yb, while the low temperature increase in susceptibility is attributed to free  $\text{Yb}^{3+}$  impurities. Intermediate valence is observed in some of the rare earth elements, such as Ce, Eu, and Yb [10]. The resulting change in valence corresponds to the effective nuclear charge and then, ultimately, to a change in lattice parameters [7]. The valence fluctuation in  $\text{Yb}_{14}\text{ZnSb}_{11}$  is the shift from the small percentage of  $\text{Yb}^{3+}$  states at high temperature to all  $\text{Yb}^{2+}$  at a low temperature. A Curie–Weiss fit of the paramagnetic region above 150 K yields a  $\mu_{\text{eff}}$  of 3.8  $\mu\text{B}$ , which corresponds to the presence of approximately 0.8  $\text{Yb}^{3+}$  per formula unit [7]. The existence of 0.75  $\text{Yb}^{3+}$  in this compound makes  $\text{Yb}_{14}\text{ZnSb}_{11}$  close to a valence precise Zintl formula, but the low resistivity and intermediate valence of Yb distinguish it from this simplistic interpretation of bonding. Recently, magnetic susceptibility measurements of the Mg compound were reported and are consistent with a similar amount of  $\text{Yb}^{3+}$ , but there is no evidence for intermediate valency [11].  $\text{Yb}_{14}\text{MnSb}_{11}$  contains only  $\text{Yb}^{2+}$ , confirmed by X-ray photoelectron spectroscopy (XPS) and X-ray magnetic circular dichroism (XMCD) and neutron measurements [8,12].

Figure 1 shows a view of the unit cell of  $\text{Yb}_{14}\text{ZnSb}_{11}$  along the  $c$  axis. This compound is considered as a Zintl phase with the approximate formula of  $13\text{Yb}^{2+} + \sim 1\text{Yb}^{3+} + \text{ZnSb}_4^{10-} + \text{Sb}_3^{7-} + 4\text{Sb}^{3-}$  [7]. There are four Yb crystallographic sites in the structure, but there is no direct evidence from the structure concerning site preference for the  $\text{Yb}^{3+}$  cation, although  $\text{Yb}_{14}\text{ZnSb}_{11}$  does have the smallest lattice parameters within this family of compounds. While the valence precise Zintl phase of  $\text{Yb}_{14}\text{AlSb}_{11}$  has been shown to have semiconducting electrical transport properties,  $\text{Yb}_{14}\text{ZnSb}_{11}$  shows the lowest resistance of compounds of this structure type published to date. The crystal structures of  $\text{Yb}_{14}\text{ZnSb}_{11}$  and  $\text{Ca}_{14}\text{ZnSb}_{11}$  were reported with defects or interstitial atoms;  $\text{Yb}_{14}\text{ZnSb}_{11}$  contains a slight deficiency on the Zn site and  $\text{Ca}_{14}\text{ZnSb}_{11}$  is purported to contain interstitial Sb [8,13]. The low resistance of  $\text{Yb}_{14}\text{ZnSb}_{11}$  is attributed to either the intermediate valence of Yb or to the defects in the structure [7].



**Figure 1.** A view of the structure of  $\text{Yb}_{14}\text{ZnSb}_{11}$  down the  $c$  axis. Yb atoms are grey, Sb atoms are in red, and the blue tetrahedra are the  $\text{ZnSb}_4$  units.

In  $\text{Yb}_{14}\text{MnSb}_{11}$ , the substitution of 3+ rare earth (RE) cations for Yb cations in small amounts ( $x < 0.5$ ) has been successful in improving  $zT$  and, in addition, has been shown in some cases to decrease the high temperature sublimation (as is the case for RE = La) [14]. A slight reduction in carrier concentration from the substitution of the RE helps to boost  $\alpha$  and, in turn,  $zT$ . In all attempts, no

Commented [Office4]: Define if necessary.

Commented [SK5R4]: done

more than  $x \sim 0.7$  was found to incorporate into the structure of single crystals of  $\text{Yb}_{14-x}\text{RE}_x\text{MnSb}_{11}$  solution grown in Sn flux [14–17]. The isostructural  $\text{Ca}_{14-x}\text{RE}_x\text{MnSb}_{11}$  grown in Pb flux is reported to exhibit a limit of  $x = 1$  [18]. It is not clear if the differences in substitution for the two different parent phases,  $\text{Yb}_{14}\text{MnSb}_{11}$  versus  $\text{Ca}_{14}\text{MnSb}_{11}$ , is due to the different flux employed or electronic and size effects.

In an effort to further expand our investigation of the effect of  $\text{RE}^{3+}$  on the transport properties of this structure type, the solid solution,  $\text{Yb}_{14-x}\text{RE}_x\text{ZnSb}_{11}$  ( $\text{RE} = \text{Y}$  and  $\text{La}$ ), was investigated. The solid solutions were made via a stoichiometric metallurgical approach and the samples condensed into fully dense pellets for measurement. Seebeck, electrical and thermal transport, and Hall measurements are reported.

## 2. Materials and Methods

### 2.1. Synthesis

Samples of  $\text{Yb}_{13.5}\text{RE}_{0.5}\text{ZnSb}_{11}$  were synthesized by combining Yb filings, Sb shot, Zn shot (100% excess), and RE filings with a total mass of 8 g in a SPEX 55ml tungsten carbide canister with one large and two small tungsten carbide balls. Work was performed in an argon filled drybox and both RE and Yb were brushed with a designated wire brush prior to filing to remove any oxide on the surface. Samples were milled using a SPEX 8000M mixer mill (SPEX, 65 Liberty Street, Metuchen, NJ 08840, USA) for a total of 1 h and 30 minutes, with 15 minutes of rest time between 30 minutes milling intervals, and a scrape down inside the drybox after 1 h of milling time. Samples were sealed in 13 cm long Nb tubes, arc melted shut under Ar, and sealed in quartz under vacuum. The samples were annealed for 96 h at 900 °C in a box furnace. Zn was used in 100% excess in an effort to prevent formation of  $\text{Yb}_{11}\text{Sb}_{10}$ . Samples made with a stoichiometric amount of Zn contained this side phase as 20% or larger composition, indicating some loss of Zn during the ball milling or annealing stage.

### 2.2. Consolidation of Powder

Annealed powder samples were made into dense pellets for measurement via a spark plasma sintering (SPS) Dr. Sinter Lab SPS-211LX unit (Fuji Electric Industrial Co., Ltd, 6-2-22 Fujimi, Tsurugashima, Saitama 350-220, Japan). In an argon drybox, the annealed powder was ground in an agate mortar and pestle and passed through a 200 mesh stainless steel sieve and loaded between multiple thin graphite foil spacers in a 12.7 mm inner diameter high-density graphite die. Sintering was performed under dynamic vacuum and with a starting sample pressure of 20 MPa. The temperature was ramped from 20 °C to 750 °C over four minutes, then to 800 °C in one minute to avoid temperature overshoot. The pressure was slowly and steadily increased to 63 MPa during the temperature range 700–800 °C (about 1.5 minutes). Then, 800 °C and 63 MPa were held constant for 15 minutes, after which the sintering process was ended, and pressure/temperature released. Pressed pellets were typically 2 g in size and were cut circumferentially into two disks using a Buehler diamond saw to allow for one to be pulverized for use in characterization via powder X-ray diffraction. The other pellet was saved for properties measurements. The pellet densities obtained through this sintering profile were greater than 96% of the theoretical densities for each compound.

### 2.3. Electron Microprobe Analysis and Wavelength Dispersive Spectroscopy

After measurement of TE properties, small pieces of pellets were mounted in epoxy and polished using grits sizes down to 0.01  $\mu\text{m}$ . Care was taken to prevent oxidation of these polished sample

Commented [AZ6]: Please confirm.

Commented [SK7R6]: This is correct

Commented [Office8]: Define if necessary.

Commented [SK9R8]: This is the manufacturer brand name

pucks and, after preparation, they were stored under dynamic vacuum and transported triple-bagged in argon atmosphere. Prior to their measurement, the pucks were carbon coated to prevent charging. Samples were analyzed using a Cameca SX100 electron microprobe (CAMECA Instruments, Inc., 5470 Nobel Drive, Madison, WI 53711, USA) with five wavelength dispersive X-ray spectrometers, operated at 15 kV accelerating potential and beam current of 20 nA. A polished single crystal of  $\text{Yb}_{14}\text{MnSb}_{11}$  was used as wavelength dispersive X-ray spectroscopy (WDS) standard for Yb. Zn and Sb metal,  $\text{LaPO}_4$ , and yttrium aluminum garnet (YAG) crystals were used as WDS standards for Zn and Sb, La and Y, respectively. The composition of each sample was determined by calculating the average and standard deviation of 15 data points of the main phase and 5 data points of the side phase randomly spaced through the sample.

#### 2.4. Powder X-Ray Diffraction

Powder X-ray diffraction (PXRD) data were collected on each sample after furnace annealing and after consolidation in the SPS. Samples were ground into a fine powder by mortar and pestle in an Ar drybox and plated with ethanol to obtain a uniform, thin spread onto a zero background holder on a Bruker D8 Advance Eco Diffractometer (BRUKER AXS, Inc., 5465 East Cheryl Parkway, Madison, WI 53711-5373, USA) operated at 40 kV and 25 mA utilizing Ni filtered  $\text{Cu K}\alpha$  radiation with the knife-edge attachment. Data were collected from  $20^\circ$  to  $80^\circ 2\theta$  with a step size of  $0.19^\circ$  at 1.5 s. Data were converted from .raw to .gas using powdll and analyzed via Rietveld refinement using General Structure Analysis System, GSAS-II [19,20]. The GSAS-II instrument parameter file used in refinement was generated from a similarly-prepared  $\text{LaB}_6$  standard. Lattice parameters of the RE phases were obtained from refinement of a 14-1-11 phase modelled from published Crystallographic Information File (CIF) of  $\text{Yb}_{14}\text{ZnSb}_{11}$ .

#### 2.5. Electrical Resistivity, Hall Effect, and Seebeck Coefficient

The electrical resistivity ( $\rho$ ) and Hall coefficient were measured simultaneously from 300 K to 1275 K on a home-built instrument under dynamic vacuum. Resistivity was measured via the van der Pauw technique using a current of 100 mA; Hall was measured under a forward and reverse magnetic field of about 7500 G. The carrier concentration ( $n$ ) was calculated from  $n = 1/R_H e$ , where  $R_H$  is the measured Hall coefficient and  $e$  the elementary charge. The hall factor was assumed to be 1 [21]. The Seebeck coefficient ( $a$ ) was measured using a home-built instrument with graphite heater using W/Nb thermocouples and the temperature differential generated by light pulse. The resultant resistivity and Seebeck data from the heating up measurements were each fitted to a six-order polynomial function for the calculation of  $zT$ .

#### 2.6. Thermal Conductivity

Thermal diffusivity ( $D_t$ ) data were collected from 300 K to 1275 K using a Netzsch LFA-457 laser flash unit (Netzsch Instruments North America, 129 Middlesex Turnpike Burlington, MA 01803 USA). Then, 12.7 mm diameter pellet samples were polished to obtain parallel top and bottom surfaces and overall thickness less than 1.2 mm, and were then coated in graphite. The measurement was performed under dynamic vacuum and with three data points per temperature step. The Cowan + pulse correction fit of the detected signal was employed through the Netzsch software to obtain values of thermal diffusivity, which were then averaged for each temperature step. Thermal conductivity was calculated via  $\kappa = D_t \times \rho \times C_p$ , where  $\rho$  = density and  $C_p$  = heat capacity as a function of temperature [21]. Room-temperature density was measured geometrically and high-temperature

Commented [AZ10]: Please confirm.

Commented [SK11R10]: nanoAmp

Commented [Office12]: Define if necessary.

Commented [Office13]: Define if necessary.

Commented [Office14]: Define if necessary.

density was estimated using thermal expansion data from previous study on  $\text{Yb}_{14}\text{MnSb}_{11}$  [22]. The previously reported experimentally-determined  $C_p$  values for  $\text{Yb}_{14}\text{MnSb}_{11}$  were used as an estimate for these compounds correcting for mass [23].

### 3. Results

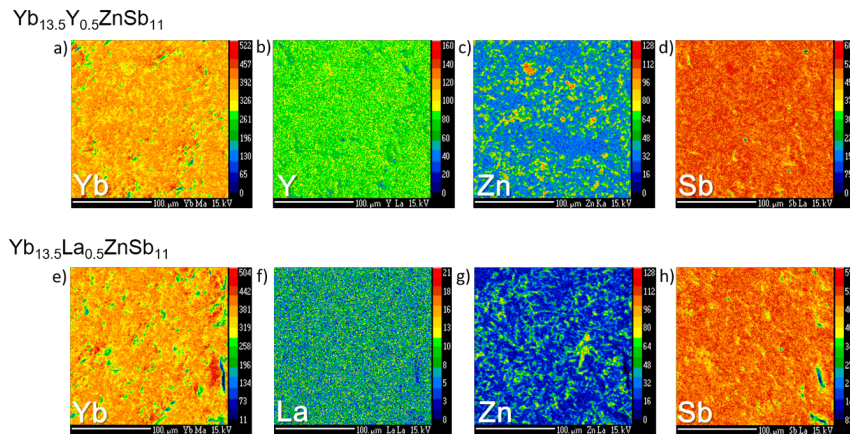
The two compounds,  $\text{Yb}_{13.5}\text{RE}_{0.5}\text{ZnSb}_{11}$  (RE = Y, La), were prepared with excess Zn in order to prevent the formation of the unwanted side phase  $\text{Yb}_{11}\text{Sb}_{10}$ . We have shown in previous publications that the highest temperature properties of compounds of this structure type are compromised once  $\text{Yb}_{11}\text{Sb}_{10}$  forms [24]. Synthesis of phase pure  $\text{Yb}_{14}\text{MgSb}_{11}$  requires 20% excess Mg; this requirement is attributed to the high vapor pressure of Mg at the reaction temperature. Zn has a slightly higher vapor pressure than that of Mg at the reaction and sintering temperatures, highlighting the need for excess [25]. The samples were prepared by balling the elements, sealing the fine powder into niobium tubes, and heat treating at 900 °C. The product was then pressed into a dense pellet via spark plasma sintering (SPS).

Yttrium and lanthanum rare earth elements were chosen for this study because of their sizes.  $\text{Y}^{3+}$  (0.900 Å) is closest in size to  $\text{Yb}^{3+}$  (0.868 Å), while  $\text{La}^{3+}$  (1.032 Å) represents the largest of the 3+ RE cations [26]. As previously mentioned, there are four crystallographic sites for the Yb cation in  $\text{Yb}_{14}\text{ZnSb}_{11}$  coordinated by antimony with various sized polyhedral volumes. The site specificity of various rare earth elements has been shown to be correlated with size in studies of  $\text{Yb}_{14-x}\text{RE}_x\text{MnSb}_{11}$ . Early RE cations with larger ionic radius, such as La, were shown to preferentially substitute on the Yb2 and Yb4 sites, while RE of smaller ionic radius such as Y substitutes on all of the Yb sites [15,16]. While it is expected that carrier concentration plays the largest role in controlling the transport properties, the RE site selectivity has been indicated as important for subtle differences in thermoelectric properties across the series,  $\text{Yb}_{14-x}\text{RE}_x\text{MnSb}_{11}$  [2,27].

Electron microprobe X-ray maps of the dense pellets (Figure 2) show that the samples have a good distribution of the elements and that there is excess Zn at the grain boundaries. Figure S1 shows the microprobe backscatter electron images of  $\text{Yb}_{13.5}\text{Y}_{0.5}\text{ZnSb}_{11}$  and  $\text{Yb}_{13.5}\text{La}_{0.5}\text{ZnSb}_{11}$ . Wavelength dispersive X-ray spectroscopy of the samples show two phases: a main phase ( $\text{Yb}_{13.5}\text{RE}_{0.5}\text{ZnSb}_{11}$ ) and side phase ( $\text{Yb}_{1.95}\text{RE}_{0.05}\text{Zn}_{0.8}\text{Sb}_2$ ), tabulated in Table 1. While the main phase was loaded as  $\text{Yb}_{13.5}\text{RE}_{0.5}\text{ZnSb}_{11}$ , the analysis shows that when RE = Y, the amount incorporated is slightly less. Whereas for RE = La, it is in good agreement, and the Zn is slightly deficient in both samples, giving rise to the stoichiometries  $\text{Yb}_{13.7}\text{Y}_{0.35}\text{Zn}_{0.85}\text{Sb}_{11}$  and  $\text{Yb}_{13.7}\text{La}_{0.48}\text{Zn}_{0.91}\text{Sb}_{11}$ . The WDS data were normalized to 11 Sb and while that provides a slightly high Yb + RE content, it is within error consistent with the stoichiometry of 14-1-11, with deficiencies of Zn.

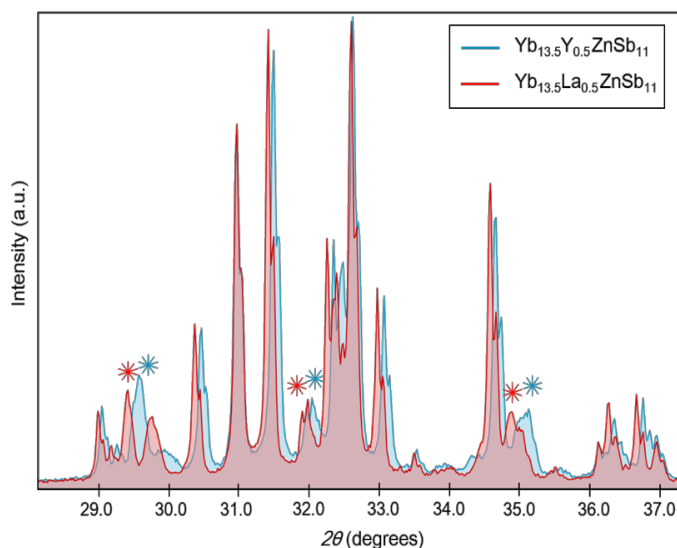
**Table 1.** Wavelength dispersive X-ray spectroscopy (WDS) stoichiometry from pelleted samples from an average of 15 data points (main phase) and an average of 5 points (side phase). RE—rare earth.

	As Loaded	Yb	RE	Zn	Sb
<b>Main Phase</b>	$\text{Yb}_{13.5}\text{Y}_{0.5}\text{ZnSb}_{11}$	13.7(2)	0.35(1)	0.85(5)	11.0(1)
	$\text{Yb}_{13.5}\text{La}_{0.5}\text{ZnSb}_{11}$	13.7(2)	0.48(5)	0.91(5)	11.0(1)
<b>Secondary Phase</b>	$\text{Yb}_{13.5}\text{Y}_{0.5}\text{ZnSb}_{11}$	1.96(2)	0.04(1)	0.78(2)	2.00(2)
	$\text{Yb}_{13.5}\text{La}_{0.5}\text{ZnSb}_{11}$	1.95(2)	0.08(1)	0.79(2)	2.00(2)



**Figure 2.** Electron microprobe X-ray maps of pelleted samples of  $\text{Yb}_{13.5}\text{Y}_{0.5}\text{ZnSb}_{11}$  (a–d) and  $\text{Yb}_{13.5}\text{La}_{0.5}\text{ZnSb}_{11}$  (e–h).

The WDS of the side phase provides a formula that is consistent as a solid solution of RE and ‘ $\text{Yb}_2\text{ZnSb}_2$ ’ with slight deficiency of Zn. The phase  $\text{Yb}_2\text{ZnSb}_2$  is as of yet unreported, and the obvious possible analog,  $\text{Ca}_2\text{ZnSb}_2$ , is also not a reported phase. Rietveld refinement of powder X-ray diffraction data for each of these samples included the phases  $\text{Yb}_{14}\text{ZnSb}_{11}$  and  $\text{Yb}_2\text{O}_3$ ; small unidentified peaks were present after refinement attributed to this side phase. There are reports of the  $\text{Eu}_2\text{ZnSb}_2$  and  $\text{Sr}_2\text{ZnSb}_2$  phase that crystallize in the  $P6_3/mmc$  space group [28]. Attempts to unambiguously identify these peaks with the appropriately scaled lattice parameters of known 2-1-2 structure types employing the elements Yb, Zn, and Sb were unsuccessful. Figure 3 contains a zoomed-in overlay of the PXRD data from  $\text{Yb}_{13.5}\text{RE}_{0.5}\text{ZnSb}_{11}$ , with the unidentified peaks marked. Unit cell parameters of  $\text{Yb}_{13.5}\text{RE}_{0.5}\text{ZnSb}_{11}$  obtained from the refinement are listed in Table 2. Representative PXRD data are provided in SFigure 2. Because the two pellets show similar amounts of this unknown phase and the majority of the phase is the  $\text{Yb}_{13.5}\text{RE}_{0.5}\text{ZnSb}_{11}$ , measurements of the thermoelectric and transport properties will provide some insight into the effects of the RE solid solution.



**Figure 3.** Powder X-ray diffraction (PXRD) patterns of  $\text{Yb}_{13.5}\text{Y}_{0.5}\text{ZnSb}_{11}$  (filled in blue) and  $\text{Yb}_{13.5}\text{La}_{0.5}\text{ZnSb}_{11}$  (filled in red) from  $28^\circ$  to  $37^\circ$   $2\theta$ . Unidentified peaks in each pattern are marked by asterisks in respective colors.

**Table 2.** Lattice parameters as determined by refinement of powder X-ray diffraction (PXRD) data using GSASII.

As Loaded	a (Å)	c (Å)	V (Å <sup>3</sup> )	wR (overall)	RF <sup>2</sup> /RF (14-1-11 phase)
$\text{Yb}_{13.5}\text{Y}_{0.5}\text{ZnSb}_{11}$	16.5939(4)	21.9309(7)	6038.9(3)	20.812%	14.122%/9.616%
$\text{Yb}_{13.5}\text{La}_{0.5}\text{ZnSb}_{11}$	16.6412(4)	21.9188(6)	6070.0(3)	19.914%	12.328%/8.316%

Figure 4 contains the plots of the electrical resistivity, Seebeck, and thermal conductivity of the samples. Both heating and cooling data sets for resistivity and Seebeck are provided in SFigure 3 and 4. As mentioned previously,  $\text{Yb}_{14}\text{ZnSb}_{11}$  has low electrical resistivity, similar to that seen in many intermediate Yb valence compounds, and magnetic susceptibility is consistent with the presence of about 0.75  $\text{Yb}^{3+}$  [7]. This mixture of  $\text{Yb}^{2+}$  and  $\text{Yb}^{3+}$  can be more exotic and can be described as an intermediate valence state. Yb containing intermetallics can show this effect when the nearly degenerate  $4f^3$  and  $4f^4$  electron levels are close to the  $s-d$  band, favoring an intermediate valence state. Rare earth ions in this state fluctuate between two  $4f$  electronic configurations competing for stability. With doping, the hybridization strength of the  $f$ -electrons with the conduction electrons can change, resulting in a change in the effective mass and thereby the associated transport properties [29,30]. The electrical resistivity of  $\text{Yb}_{13.5}\text{RE}_{0.5}\text{ZnSb}_{11}$  shows a significant increase at temperatures above 500 K over  $\text{Yb}_{14}\text{ZnSb}_{11}$  for both samples. In the Zintl electron counting scenario,  $\text{RE}^{3+}$  adds one electron to the p-type  $\text{Yb}_{14}\text{ZnSb}_{11}$  and is thus expected to reduce the carrier concentration and thereby the electrical resistivity. Consistent with the slightly higher amount of RE in the sample, the RE = La sample shows a slightly higher resistivity value. Consistent with the electrical resistivity, the thermal conductivities of the samples are reduced from that of  $\text{Yb}_{14}\text{ZnSb}_{11}$ . Lattice thermal conductivity is provided in SFigure 4. This is attributed to both the loss of electrical conduction at a high temperature and, from point defect scattering, of the solid solution. There is a decrease in thermal conductivity even at 300 K compared with  $\text{Yb}_{14}\text{ZnSb}_{11}$ . The Seebeck coefficient shows a remarkable increase over

Commented [Office15]: Define if necessary.

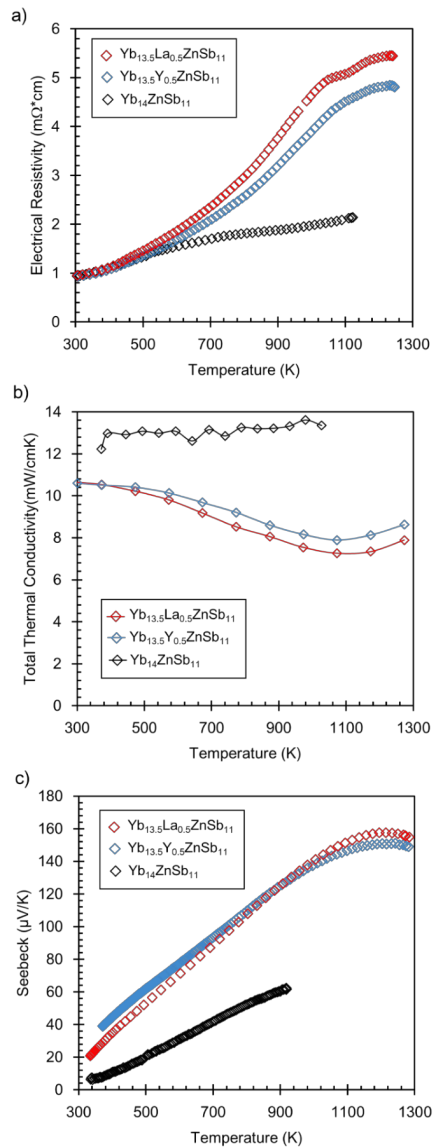
Commented [SK16R15]: Done earlier

Commented [Office17]: Please check.

Commented [Office18]: Please check that intended meaning is retained.



that of  $\text{Yb}_{14}\text{ZnSb}_{11}$  for the entire temperature range, with the RE = La sample showing a slightly higher Seebeck at the highest temperatures, consistent with the slightly larger amount of RE cation. This suggests that the effect of the  $\text{RE}^{3+}$  is to change the hybridization of Yb/RE, thereby leading to a change in bands that are important for the high temperature behavior.



**Figure 4.** (a) Electrical resistivity, (b) thermal conductivity, and (c) Seebeck for the  $\text{Yb}_{13.5}\text{RE}_{0.5}\text{ZnSb}_{11}$  (RE = Y, La) compounds plotted against those of  $\text{Yb}_{14}\text{ZnSb}_{11}$  ( $\text{Yb}_{14}\text{ZnSb}_{11}$  data from [the work of \[9\]](#)).

**Commented [AZ19]:** Please consider the change.

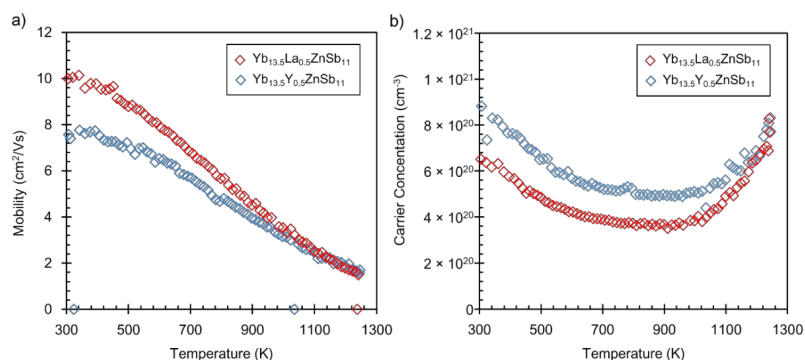
Please also confirm if the copyright is needed for this figure.

**Commented [SK20R19]:** No copyright necessary as it is our own data.

Figure 5 shows the Hall mobility and Hall carrier concentration of the RE solid solutions. The RE element was substituted with the goal of reducing the carrier concentration and making this compound a better thermoelectric material. The carrier concentrations of both RE samples are lower than that of  $\text{Yb}_{14}\text{ZnSb}_{11}$ , which shows conductive electrical resistivity at low temperatures and presumably has a high carrier concentration. Typically, for transition metal containing compounds with the formula  $\text{Yb}_{14}\text{MSb}_{11}$ , where Yb is considered to be all  $\text{Yb}^{2+}$  and  $M = \text{M}^{2+}$ , the carrier concentration is equivalent to one hole in the unit cell volume. Therefore, the addition of an  $\text{RE}^{3+}$  cation provides one additional electron to reduce the p-type carrier concentration. In this example, considering the effect of the  $\text{RE}^{3+}$  cation is complicated because this compound has both  $\text{Yb}^{2+}$  and  $\text{Yb}^{3+}$  at room temperature. If the  $\text{Y}^{3+}$  or  $\text{La}^{3+}$  cation does not simply substitute for  $\text{Yb}^{3+}$  in  $\text{Yb}_{14}\text{ZnSb}_{11}$  and instead substitutes for  $\text{Yb}^{2+}$ , it would contribute an extra 0.5 electron per formula unit (or 0.35 in the case of Y). Calculating the carrier concentration, it would contribute approximately  $6.6 \times 10^{20}$  carriers/cm<sup>3</sup>. This would indicate that at room temperature, the carrier concentration of  $\text{Yb}_{14}\text{ZnSb}_{11}$  should be  $1.3 \times 10^{21}$  cm<sup>-3</sup>, a value close to the highest room temperature concentrations obtained for  $\text{Yb}_{14}\text{MnSb}_{11}$ , which is much less metallic than  $\text{Yb}_{14}\text{ZnSb}_{11}$ . In a similar system,  $\text{Yb}_{14-x}\text{La}_x\text{MnSb}_{11}$  ( $x = 0.4, 0.7$ ) was found to have a reduction in room temperature carrier concentration from that of  $\text{Yb}_{14}\text{MnSb}_{11}$  ( $1.1$  to  $1.3 \times 10^{21}$  cm<sup>-3</sup>), which closely corresponded with the amount of La added,  $6 \times 10^{20}$  cm<sup>-3</sup> and  $4 \times 10^{20}$  cm<sup>-3</sup> for 0.4 La and 0.7 La, respectively [14,17]. Therefore, these results suggest that  $\text{RE}^{3+}$  is substituting for  $\text{Yb}^{3+}$  in  $\text{Yb}_{14}\text{ZnSb}_{11}$  and that once the  $\text{Yb}^{3+}$  is no longer a species in the structure, the metallic conduction is no longer viable. Because neither Y nor La have filled *f* electrons, it is possible that a hybridized band from  $\text{Yb}^{3+}$  is responsible for the low electrical conduction in  $\text{Yb}_{14}\text{ZnSb}_{11}$ . Considering the reductions in carrier concentrations from the  $\text{Y}^{3+}$  and  $\text{La}^{3+}$  substitutions, the large increase in Seebeck is consistent.

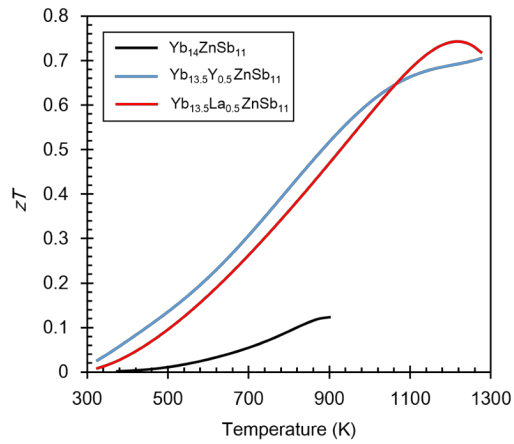
Commented [AZZ1]: Please consider the change.

Commented [SK22R21]: ok



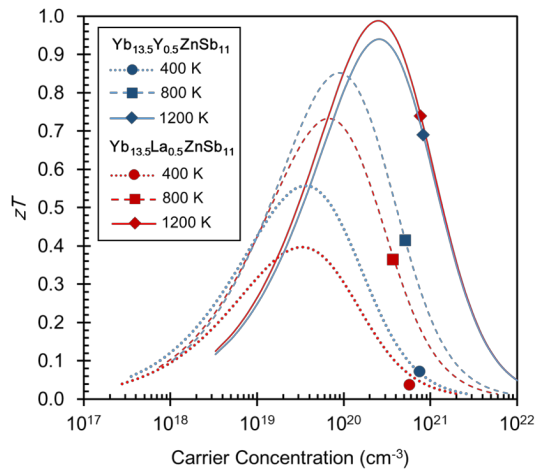
**Figure 5.** (a) Mobility and (b) carrier concentration of the  $\text{Yb}_{13.5}\text{RE}_{0.5}\text{ZnSb}_{11}$  (rare earth (RE) = Y, La) compounds.

Figure 6 shows the  $zT$  for the  $\text{Yb}_{13.5}\text{RE}_{0.5}\text{ZnSb}_{11}$  (RE = Y, La) compounds compared with the  $zT$  of  $\text{Yb}_{14}\text{ZnSb}_{11}$ . The properties of  $\text{Yb}_{14}\text{ZnSb}_{11}$  were only measured up to 900 K because of the stability of the compound. With the addition of the RE, the  $\text{Yb}_{13.5}\text{RE}_{0.5}\text{ZnSb}_{11}$  (RE = Y, La) compounds are stable to 1275 K. This is a side benefit of  $\text{RE}^{3+}$  incorporation that has been also noted for  $\text{Yb}_{14}\text{MnSb}_{11}$ , where the melting point is increased and sublimation vapor pressure is decreased depending upon the identification and amount of rare earth ion incorporation [31].



**Figure 6.** Calculated  $zT$  for the  $\text{Yb}_{13.5}\text{RE}_{0.5}\text{ZnSb}_{11}$  (RE = Y, La) compounds compared with that of  $\text{Yb}_{14}\text{ZnSb}_{11}$  (data from the work of [9]).

Figure 7 contains Pisarenko plots at 400 K, 800 K, and 1200 K that were generated using a single parabolic band (SPB) model. The parameters used to generate these plots are provided in Table 3. The effective mass values generated for this model at 1200 K for both RE = La, Y are significantly larger than those generated at 400 and 800 K. These parameters indicate that modelling  $\text{Yb}_{13.5}\text{RE}_{0.5}\text{ZnSb}_{11}$  as a single parabolic band is insufficient and that the band(s) change from light to heavy with temperature [32]. This is supported by the reduction in carrier concentration that these samples exhibit with only a small donation of 0.5 or less extra  $e^-$  density per formula unit. These plots suggest that the carrier concentration could be further reduced to obtain peak  $zT$ .



**Figure 7.** Pisarenko plots for the  $\text{Yb}_{13.5}\text{RE}_{0.5}\text{ZnSb}_{11}$  (RE = Y, La) compounds calculated at 400, 800, and 1200 K.

Table 3. Values used in generating the Pisarenko plots shown in Figure 7.

Sample	T (K)	$m^*$ ( $m_0$ )	$\mu_0$ ( $\text{cm}^2/\text{V}\cdot\text{s}$ )	$\kappa_L$ ( $\text{mW}/\text{cm}\cdot\text{K}$ )
Yb <sub>13.5</sub> Y <sub>0.5</sub> ZnSb <sub>11</sub>	400	1.40	18.95	2.4
	800	1.47	7.61	3.2
	1200	2.07	2.11	3.8
Yb <sub>13.5</sub> La <sub>0.5</sub> ZnSb <sub>11</sub>	400	1.18	24.44	3.4
	800	1.15	9.3	3.4
	1200	2.07	2.08	3.5

Commented [AZ23]: Please confirm.

Commented [SK24R23]: Correct, kappa (subscript) capital L

## 5. Conclusions

The addition of the rare earths, Y and La, to the Yb<sub>14</sub>ZnSb<sub>11</sub> system has a profound but complex effect on the carrier concentration and presumably the density of states (DOS) as a function of temperature. The large improvement in  $zT$  observed in the Yb<sub>13.5</sub>RE<sub>0.5</sub>ZnSb<sub>11</sub> (RE = Y, La) samples over Yb<sub>14</sub>ZnSb<sub>11</sub> is unexpected because these RE<sup>3+</sup> ions are simply replacing Yb<sup>3+</sup>. These remarkable results suggest that better modeling/theoretical understanding of complex systems is important to further advance the field. Renewed interest in the nuanced system of Yb<sub>14</sub>ZnSb<sub>11</sub> may lead to a more complete understanding of the electronic and structural factors affecting the 14-1-11 compounds and aid in the future design of optimized materials. Further improvement to the  $zT$  of these compounds might be achieved by reducing carrier concentration further by means of increasing  $x$  or by substitution of Ca on the Yb site or Al on the Zn site. Yb<sub>14-x</sub>Ca<sub>x</sub>MnSb<sub>11</sub> and Yb<sub>14-x</sub>Mn<sub>x</sub>AlSb<sub>11</sub> solid solutions show reduced carrier concentration with increasing  $x$  and higher  $zT$ 's than Yb<sub>14</sub>MnSb<sub>11</sub>. While  $x$  has been shown to be limited in the case of Yb<sub>14-x</sub>RE<sub>x</sub>MnSb<sub>11</sub> to  $x \sim 0.5$ , it might be possible to increase  $x$  to 1 for the Zn 14-1-11 phase, as is the case for Ca<sub>14-x</sub>RE<sub>x</sub>MnSb<sub>11</sub>. Overall, these results for Yb<sub>13.5</sub>RE<sub>0.5</sub>ZnSb<sub>11</sub> (RE = Y, La) suggest that there is significant room for improvement of  $zT$  with new compositions of this structure type.

**Supplementary Materials:** The following are available online at [www.mdpi.com/xxx/s1](http://www.mdpi.com/xxx/s1), Figure S1: Microprobe backscatter electron images of (a) Yb<sub>13.5</sub>Y<sub>0.5</sub>ZnSb<sub>11</sub> and (b) Yb<sub>13.5</sub>La<sub>0.5</sub>ZnSb<sub>11</sub>, Figure S2: Powder X-Ray diffraction patterns from samples of Yb<sub>13.5</sub>Y<sub>0.5</sub>ZnSb<sub>11</sub> and Yb<sub>13.5</sub>La<sub>0.5</sub>ZnSb<sub>11</sub>, Figure S3. Electrical resistivity as a function of temperature for samples of Yb<sub>13.5</sub>Y<sub>0.5</sub>ZnSb<sub>11</sub>, Yb<sub>13.5</sub>La<sub>0.5</sub>ZnSb<sub>11</sub> and Yb<sub>14</sub>ZnSb<sub>11</sub> (data from Ref. 9). Figure S4. Seebeck as a function of temperature for samples of Yb<sub>13.5</sub>Y<sub>0.5</sub>ZnSb<sub>11</sub>, Yb<sub>13.5</sub>La<sub>0.5</sub>ZnSb<sub>11</sub> and Yb<sub>14</sub>ZnSb<sub>11</sub> (data from Ref. 9). Figure S5. Total thermal conductivity and calculated lattice thermal conductivity as a function of temperature for samples of Yb<sub>13.5</sub>Y<sub>0.5</sub>ZnSb<sub>11</sub>, Yb<sub>13.5</sub>La<sub>0.5</sub>ZnSb<sub>11</sub> and Yb<sub>14</sub>ZnSb<sub>11</sub> (taken from Ref. 9).

Commented [AZ25]: Newly added information, please confirm.

**Author Contributions:** Conceptualization, E.L.K.W. and S.M.K.; methodology, E.L.K.W. and S.M.K.; validation, E.L.K.W., N.S.G., S.K.B., and S.M.K.; formal analysis, E.L.K.W.; investigation, E.L.K.W. and N.S.G.; resources, S.M.K. and S.K.B.; data curation, S.M.K.; writing—original draft preparation, E.L.K.W. and S.M.K.; writing—review and editing, S.M.K. and S.K.B.; visualization, E.L.K.W.; supervision, S.M.K.; project administration, S.M.K.; funding acquisition, S.M.K. and S.K.B.

**Funding:** We thank NEUP for funding. Part of this work was performed at the California Institute of Technology/Jet Propulsion Laboratory under contract with the National Aeronautics and Space Administration. This work was supported by the NASA Science Missions Directorate under the Radioisotope Power Systems Program.

**Acknowledgments:** We thank Nicholas Botto for electron microprobe analysis.

**Conflicts of Interest:** The authors declare no conflict of interest. The funders had no role in the design of the study; in the collection, analyses, or interpretation of data; in the writing of the manuscript; or in the decision to publish the results.

## References

1. Kauzlarich, S.M.; Brown, S.R.; Jeffrey Snyder, G. Zintl phases for thermoelectric devices. *Dalt. Trans.* **2007**, 2099, doi:10.1039/B702266B.

2. Hu, Y.; Cerretti, G.; Kunz Wille, E.L.; Bux, S.K.; Kauzlarich, S.M. The remarkable crystal chemistry of the  $\text{Ca}_{14}\text{AlSb}_{11}$  structure type, magnetic and thermoelectric properties. *J. Solid State Chem.* **2019**, *271*, 88–102.
3. Kauzlarich, S.M.; Zevalkink, A.; Toberer, E.; Snyder, G.J. Zintl phases: Recent developments in thermoelectrics and future outlook. *RSC Energy Environ. Ser.* **2017**, *2017*, 1–26.
4. Toberer, E.S.; May, A.F.; Snyder, G.J. Zintl Chemistry for Designing High Efficiency Thermoelectric Materials. *Chem. Mater.* **2010**, *22*, 624–634.
5. Brown, S.R.; Kauzlarich, S.M.; Gascoin, F.; Jeffrey Snyder, G.  $\text{Yb}_{14}\text{MnSb}_{11}$ : New high efficiency thermoelectric material for power generation. *Chem. Mater.* **2006**, *18*, 1873–1877.
6. Hu, Y.; Wang, J.; Kawamura, A.; Kovnir, K.; Kauzlarich, S.M.  $\text{Yb}_{14}\text{MgSb}_{11}$  and  $\text{Ca}_{14}\text{MgSb}_{11}$ —New Mg-Containing Zintl Compounds and Their Structures, Bonding, and Thermoelectric Properties. *Chem. Mater.* **2015**, *27*, 343–351.
7. Fisher, I.R.; Bud'ko, S.L.; Song, C.; Canfield, P.C.; Ozawa, T.C.; Kauzlarich, S.M.  $\text{Yb}_{14}\text{ZnSb}_{11}$ : Charge balance in Zintl compounds as a route to intermediate Yb valence. *Phys. Rev. Lett.* **2000**, *85*, 1120–1123.
8. Holm, A.P.; Ozawa, T.C.; Kauzlarich, S.M.; Morton, S.A.; Dan Waddill, G.; Tobin, J.G. X-ray photoelectron spectroscopy studies of  $\text{Yb}_{14}\text{MnSb}_{11}$  and  $\text{Yb}_{14}\text{ZnSb}_{11}$ . *J. Solid State Chem.* **2005**, *178*, 262–269.
9. Brown, S.R.; Toberer, E.S.; Ikeda, T.; Cox, C.A.; Gascoin, F.; Kauzlarich, S.M.; Snyder, G.J. Improved Thermoelectric Performance in  $\text{Yb}_{14}\text{Mn}_{1-x}\text{Zn}_x\text{Sb}_{11}$  by the Reduction of Spin-Disorder Scattering. *Chem. Mater.* **2008**, *20*, 3412–3419.
10. Sampathkumaran, E. V Intermediate valence in rare earth systems. *Hyperfine Interact.* **1986**, *27*, 183–192.
11. Kunz Wille, E.L.; Jo, N.H.; Fettinger, J.C.; Canfield, P.C.; Kauzlarich, S.M. Single crystal growth and magnetic properties of the mixed valent Yb containing Zintl phase,  $\text{Yb}_{14}\text{MgSb}_{11}$ . *Chem. Commun.* **2018**, *54*, 12946–12949.
12. Stone, M.B.; Garlea, V.O.; Gillon, B.; Cousson, A.; Christianson, A.D.; Lumsden, M.D.; Nagler, S.E.; Mandrus, D.; Sales, B.C. Excitations and magnetization density distribution in the dilute ferromagnetic semiconductor  $\text{Yb}_{14}\text{MnSb}_{11}$ . *Phys. Rev. B* **2017**, *95*, 020412.
13. Young, D.M.; Torardi, C.C.; Olmstead, M.M.; Kauzlarich, S.M. Exploring the Limits of the Zintl Concept for the  $\text{A}_{14}\text{MPn}_{11}$  Structure Type with  $\text{M} = \text{Zn}, \text{Cd}$ . *Chem. Mater.* **1995**, *7*, 93–101.
14. Toberer, E.S.; Brown, S.R.; Ikeda, T.; Kauzlarich, S.M.; Jeffrey Snyder, G. High thermoelectric efficiency in lanthanum doped  $\text{Yb}_{14}\text{MnSb}_{11}$ . *Appl. Phys. Lett.* **2008**, *93*, 062110.
15. Hu, Y.; Chen, C.-W.; Cao, H.; Makhmudov, F.; Grebenkemper, J.H.; Abdusalyamova, M.N.; Morosan, E.; Kauzlarich, S.M. Tuning Magnetism of  $[\text{MnSb}_4]^{2-}$  Cluster in  $\text{Yb}_{14}\text{MnSb}_{11}$  through Chemical Substitutions on Yb Sites: Appearance and Disappearance of Spin Reorientation. *J. Am. Chem. Soc.* **2016**, *138*, 12422–12431.
16. Grebenkemper, J.H.; Kauzlarich, S.M. Magnetic and structural effects of partial Ce substitution in  $\text{Yb}_{14}\text{MnSb}_{11}$ . *APL Mater.* **2015**, *3*, 041503.
17. Sales, B.C.; Khalifah, P.; Enck, T.P.; Nagler, E.J.; Sykora, R.E.; Jin, R.; Mandrus, D. Kondo Lattice Behavior in the Ordered Dilute Magnetic Semiconductor  $\text{Yb}_{14-x}\text{La}_x\text{MnSb}_{11}$ . *Phys. Rev. B* **2005**, *72*, doi:10.1103/PhysRevB.72.205207.
18. Prakash, J.; Stoyko, S.; Voss, L.; Bobev, S. On the Extended Series of Quaternary Zintl Phases  $\text{Ca}_{13}\text{REMnSb}_{11}$  ( $\text{RE} = \text{La}–\text{Nd}, \text{Sm}, \text{Gd}–\text{Dy}$ ). *Eur. J. Inorg. Chem.* **2016**, *2016*, 2912–2922.
19. Toby, B. H., Von Dreele, R.B. GSAS-II: The genesis of a modern open-source all purpose crystallography software package. *J. Appl. Crystallogr.* **2013**, *46*, 544–549.
20. Kourkouvelis, N. Recent developments. *ICDD Annu. Spring Meet. Powder Diffr.* **2013**, *28*, 137–48.
21. Borup, K.A.; De Boor, J.; Wang, H.; Drymiotis, F.; Gascoin, F.; Shi, X.; Chen, L.; Fedorov, M.I.; Müller, E.; Iversen, B.B.; et al. Measuring thermoelectric transport properties of materials. *Energy Environ. Sci.* **2015**, *8*, 423–435.
22. Ravi, V.; Firdosy, S.; Caillat, T.; Brandon, E.; Van Der Walde, K.; Maricic, L.; Sayir, A. Thermal expansion studies of selected high-temperature thermoelectric materials. *J. Electron. Mater.* **2009**, *38*, 1433–1442.
23. Cox, C.A.; Toberer, E.S.; Levchenko, A.A.; Brown, S.R.; Snyder, G.J.; Navrotsky, A.; Kauzlarich, S.M. Structure, Heat Capacity, and High-Temperature Thermal Properties of  $\text{Yb}_{14}\text{Mn}_{1-x}\text{Al}_x\text{Sb}_{11}$ . *Chem. Mater.* **2009**, *21*, 1354–1360.
24. Grebenkemper, J.H.; Hu, Y.; Barrett, D.; Gogna, P.; Huang, C.-K.; Bux, S.K.; Kauzlarich, S.M. High Temperature Thermoelectric Properties of  $\text{Yb}_{14}\text{MnSb}_{11}$  Prepared from Reaction of  $\text{MnSb}$  with the Elements. *Chem. Mater.* **2015**, *27*, 5791–5798.
25. Honig, R.E. Vapor Pressure Data for the More Common Elements. *RCA Rev.* **1957**, *18*, 195–204.

26. Shannon, R.D. IUCr Revised effective ionic radii and systematic studies of interatomic distances in halides and chalcogenides. *Acta Crystallogr. Sect. A* **1976**, *32*, 751–767.
27. Hu, Y.; Bux, S.K.; Grebenkemper, J.H.; Kauzlarich, S.M. The effect of light rare earth element substitution in  $\text{Yb}_{14}\text{MnSb}_{11}$  on thermoelectric properties. *J. Mater. Chem. C* **2015**, *3*, 10566–10573.
28. Wilson, D.K.; Saparov, B.; Bobev, S. Synthesis, Crystal Structures and Properties of the Zintl Phases  $\text{Sr}_2\text{ZnP}_2$ ,  $\text{Sr}_2\text{ZnAs}_2$ ,  $\text{A}_2\text{ZnSb}_2$  and  $\text{A}_2\text{ZnBi}_2$  (A = Sr and Eu). *Z. Anorg. Allg. Chem.* **2011**, *637*, 2018–2025.
29. Varma, C.M. Mixed-valence compounds. *Rev. Mod. Phys.* **1976**, *48*, 219–238.
30. Stewart, G.R. Heavy-fermion systems. *Rev. Mod. Phys.* **1984**, *56*, 755–787.
31. Vasilyeva, I.G.; Nikolaev, R.E.; Abdusaljamova, M.N.; Kauzlarich, S.M. Thermochemistry study and improved thermal stability of  $\text{Yb}_{14}\text{MnSb}_{11}$  alloyed by  $\text{Ln}^{3+}$  (La–Lu). *J. Mater. Chem. C* **2016**, *4*, 3342–3348.
32. Zevkink, A.; Smiadak, D.M.; Blackburn, J.L.; Ferguson, A.J.; Chabinyk, M.L.; Delaire, O.; Wang, J.; Kovnir, K.; Martin, J.; Schelhas, L.T.; et al. A practical field guide to thermoelectrics: Fundamentals, synthesis, and characterization. *Appl. Phys. Rev.* **2018**, *5*, 21303.



© 2019 by the authors. Submitted for possible open access publication under the terms and conditions of the Creative Commons Attribution (CC BY) license (<http://creativecommons.org/licenses/by/4.0/>).