

UC Davis

UC Davis Previously Published Works

Title

Correction: Incomplete dominance of deleterious alleles contributes substantially to trait variation and heterosis in maize

Permalink

<https://escholarship.org/uc/item/0c64k2b5>

Journal

PLOS Genetics, 17(9)

ISSN

1553-7390

Authors

Yang, Jinliang
Mezmouk, Sofiane
Baumgarten, Andy
[et al.](#)

Publication Date

2021

DOI

10.1371/journal.pgen.1009825

Copyright Information

This work is made available under the terms of a Creative Commons Attribution License, available at <https://creativecommons.org/licenses/by/4.0/>

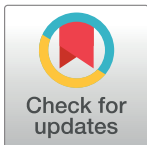
Peer reviewed

CORRECTION

Correction: Incomplete dominance of deleterious alleles contributes substantially to trait variation and heterosis in maize

Jinliang Yang, Sofiane Mezmouk, Andy Baumgarten, Edward S. Buckler, Katherine E. Guill, Michael D. McMullen, Rita H. Mumm, Jeffrey Ross-Ibarra

In [Fig 1](#), panel a is incorrect. Please see the correct [Fig 1](#) here.



OPEN ACCESS

Citation: Yang J, Mezmouk S, Baumgarten A, Buckler ES, Guill KE, McMullen MD, et al. (2021) Correction: Incomplete dominance of deleterious alleles contributes substantially to trait variation and heterosis in maize. *PLoS Genet* 17(9): e1009825. <https://doi.org/10.1371/journal.pgen.1009825>

Published: September 28, 2021

Copyright: © 2021 Yang et al. This is an open access article distributed under the terms of the [Creative Commons Attribution License](#), which permits unrestricted use, distribution, and reproduction in any medium, provided the original author and source are credited.

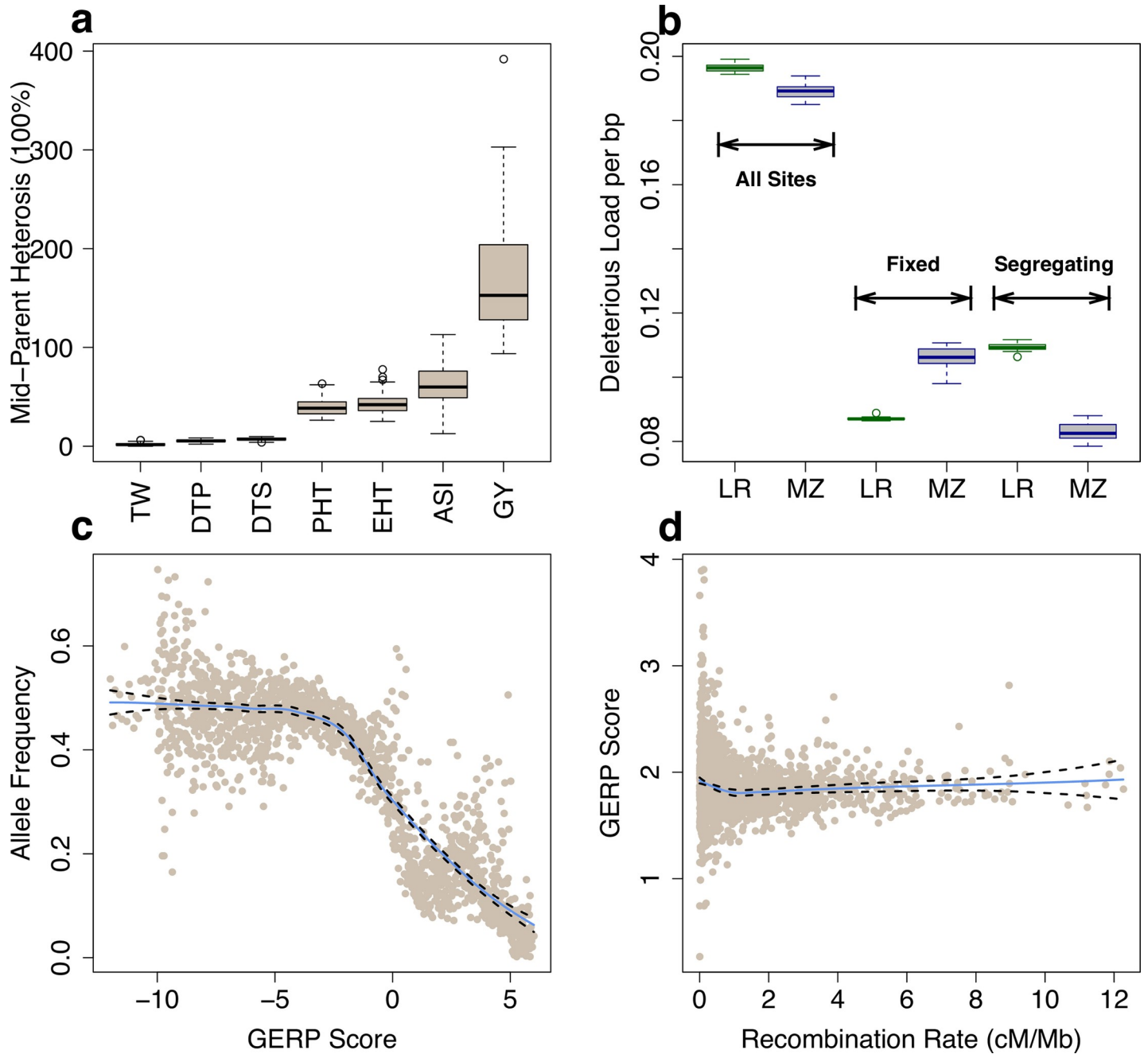


Fig 1. Heterosis and deleterious variants. (a) Boxplots (median and interquartile range) of percent mid-parent heterosis (MPH). (b) Proportion of deleterious alleles in landraces (LR, green) and elite maize (MZ, blue) lines. (c) The allele frequency of the minor alleles in the multi-species alignment in bins of 0.01 GERP score (including GERP ≤ 0 sites). (d) The mean GERP score for putatively deleterious sites (GERP > 0). Each point represents a 1 Mb window. In (c) and (d) the solid blue and dashed black lines define the best-fit regression line and its 95% confidence interval.

<https://doi.org/10.1371/journal.pgen.1009825.g001>

In [S1 Table](#), the values in the eleventh column, “Mid-parent_Heterosis”, are incorrect. Please view the correct [S1 Table](#) below.

Supporting information

S1 Table. Best Linear Unbiased Estimator (BLUE) values and levels of heterosis of the seven phenotypic traits for the 66 hybrids. Abbreviations for phenotypic traits are plant height (PHT, in cm), height of primary ear (EHT, in cm), days to 50% pollen shed (DTP), days to 50% silking (DTS), anthesis-silking interval (ASI, in days), grain yield adjusted to 15.5% moisture (GY, in bu/A), and test weight (TW, weight of 1 bushel of grain in pounds). (CSV)

Reference

1. Yang J, Mezouk S, Baumgarten A, Buckler ES, Guill KE, McMullen MD, et al. (2017) Incomplete dominance of deleterious alleles contributes substantially to trait variation and heterosis in maize. *PLoS Genet* 13(9): e1007019. <https://doi.org/10.1371/journal.pgen.1007019> PMID: [28953891](https://pubmed.ncbi.nlm.nih.gov/28953891/)