

UC Berkeley

UC Berkeley Previously Published Works

Title

A combination of directing groups and chiral anion phase-transfer catalysis for enantioselective fluorination of alkenes

Permalink

<https://escholarship.org/uc/item/09p0966d>

Journal

Proceedings of the National Academy of Sciences of the United States of America, 110(34)

ISSN

0027-8424

Authors

Wu, Jeffrey
Wang, Yi-Ming
Drljevic, Amela
[et al.](#)

Publication Date

2013-08-20

DOI

10.1073/pnas.1304346110

Peer reviewed

Physical Sciences: Chemistry

A Combination of Directing Groups and Chiral Anion Phase-Transfer Catalysis for Enantioselective Fluorination of Alkenes

Jeffrey Wu, Yi-Ming Wang, Amela Drljevic, Vivek Rauniar, Robert J. Phipps, F. Dean Toste*
Department of Chemistry, University of California, Berkeley, CA 94720

Abbreviations: DG = directing group

DABCO = 1,4-diazabicyclo[2.2.2]octane

TRIP = 3,3'-Bis(2,4,6-triisopropylphenyl)-1,1'-binaphthyl-2,2'-diyl
hydrogenphosphate

LUMO = Lowest unoccupied molecular orbital

HOMO = Highest occupied molecular orbital

Data deposition: The supplementary crystallographic data for this paper has been deposited in the Cambridge Structural Database, Cambridge Crystallographic Data Centre, Cambridge CB2 1EZ, United Kingdom (CSD references nos. 927904, 927905 and 947493). These data can be obtained free of charge from The Cambridge Crystallographic Data Centre via www.ccdc.cam.ac.uk/data_request/cif.

* To whom correspondence should be addressed. E-mail: fdtoste@berkeley.edu

Abstract:

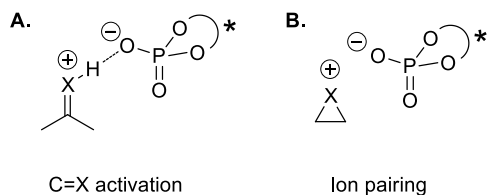
We report a catalytic enantioselective electrophilic fluorination of alkenes to form tertiary and quaternary C(sp³)-F bonds, and generate β-amino- and β-aryl- allylic fluorides. The reaction takes advantage of the ability of chiral phosphate anions to serve as a solid-liquid phase transfer catalysts and hydrogen-bond with directing groups on the substrate. A variety of heterocyclic, carbocyclic, and acyclic alkenes react with good to excellent yields and high enantioselectivities. Further, we demonstrate a one-pot, tandem dihalogenation-cyclization reaction using the same catalytic system twice in series, with an analogous electrophilic brominating reagent in the second step.

body : In the history of asymmetric catalysis, directing groups (DGs) have been instrumental for the achievement of selectivity in transformations of great synthetic utility. Directing groups (DGs) have likewise been shown to play a central role in transition-metal catalysis, having recently been utilized for site-selective C-H activation (1-6). The advantage of using a DG lies in the ability to functionalize non-polar bonds (such as alkenes) while maintaining beneficial polar interactions between the substrate and chiral source; however, DGs have rarely been utilized in organocatalysis. In this context, the Miller research group reported the epoxidation reaction of allylic alcohols using an amino acid catalyst capable of hydrogen-bonding with the alcohol DG and conducted elegant studies delineating the importance of hydrogen bonding interactions for this and related systems (7-9) (Figure 1). The Tan research group has elaborated this idea through the concept of induced intermolecularity, in which the catalyst reduces the entropic cost of reaction by bringing together reactants and organizing the transition state through favorable binding interactions (10).

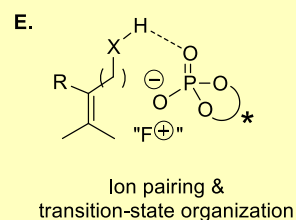
The peptide catalysts in Miller's studies facilitate reaction through organization of the reactants in the transition state (Figure 1) rather than through formation of covalent adducts or LUMO-lowering protonation (or hydrogen bonding), which has generally required substrates containing carbonyl and imine moieties (11-13). This generalization applies to chiral phosphoric acids, which have been predominantly used in activation of the electrophile, although hydrogen bonding to the nucleophile has also been implicated as a key component (14). More recently the anionic conjugate bases of chiral phosphoric acids (i.e., chiral phosphate *anions*) have received attention as counterions for positively charged electrophilic intermediates, wherein ion pairing with the phosphate anion provides a suitable chiral environment for subsequent enantioselective transformations of the electrophilic species (11-13). The generality of the concept of ion pair catalysis has allowed the application of these highly tunable scaffolds to a diverse range of transformations in which carbonyl or imine activation is clearly inapplicable (15-17). As part of both aforementioned modes of reactivity, hydrogen bonds between chiral phosphoric acids or phosphate anions and reacting functionality are often invoked as crucial interactions for achieving high levels of enantioselectivity (11-14). We speculated that hydrogen bonding

interactions with substrate functionality may play a key role, via transition state organization, even when the interacting functionality does not directly participate in the transformation. We saw an opportunity to combine the principle of transition-state organization with our recently reported chiral anion phase-transfer system, with the hypothesis that an allylic hydrogen-bonding DG could effectively direct an ion-paired chiral phosphate species for the enantioselective electrophilic fluorination of alkenes (Figure 1E,F).

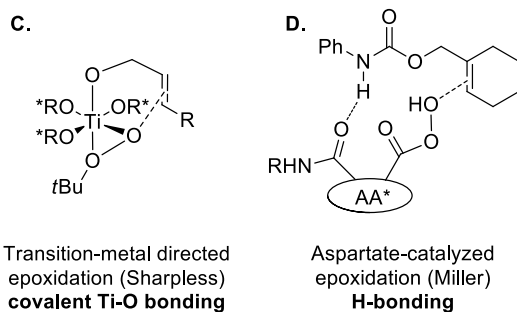
Precedented modes of reactivity for chiral phosphoric acid / phosphate anions



This report



Precedented interactions in directed reactions of allylic substrates



This report

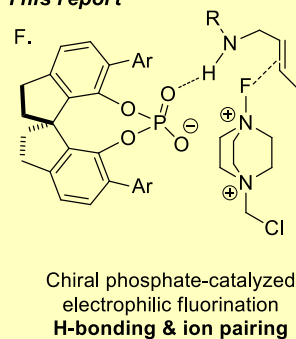


Figure 1. Top: Modes of reactivity in chiral phosphoric acid / phosphate anion chemistry. Bottom: Substrate-catalyst interactions in directed allylic alkene functionalizations.

In-situ formation of a chiral "F⁺" source

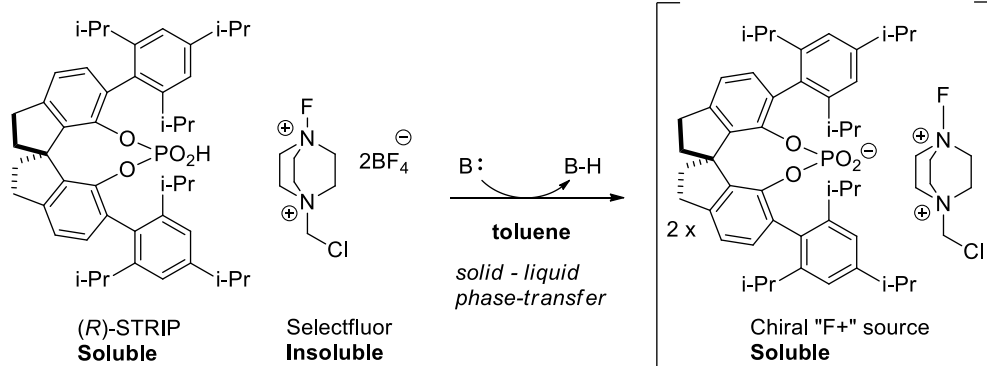


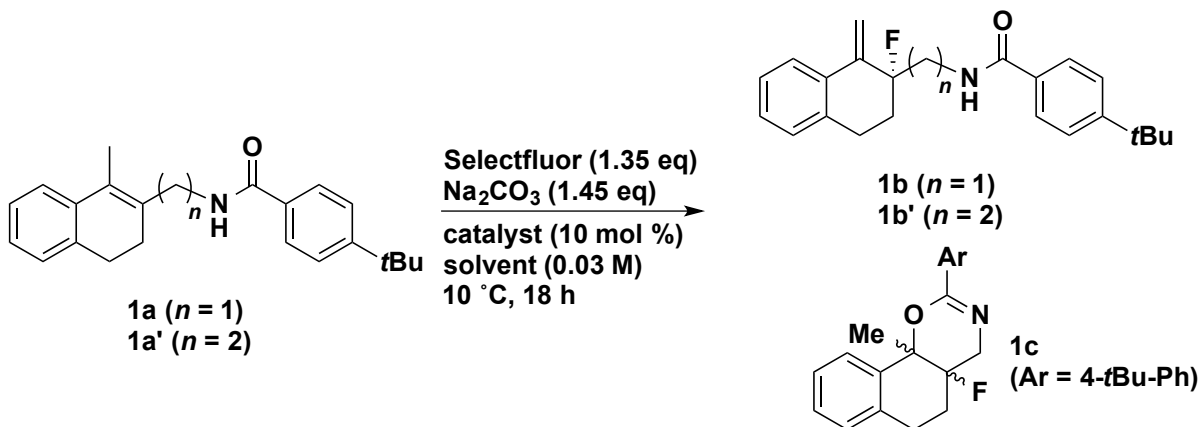
Figure 2. A source of electrophilic fluorine soluble in hydrophobic nonpolar solvents, *via* solid-liquid phase-transfer. Both solubility and chirality are imparted by the organophosphate catalyst ion-paired with the positively charged DABCO-fluorine moiety.

Our recent enantioselective halocyclization methods (18-20) utilized *chiral anion phase-transfer catalysis*, in which metathesis between an insoluble electrophilic salt (such as Selectfluor) and a chiral lipophilic phosphate anion derived from catalysts such as TRIP generates a soluble electrophile in a chiral environment (Figure 2). In addition, we reported the enantioselective fluorinations of enamides using the same phase-transfer system (21-22). In the latter examples, hydrogen-bonding between the reacting enamide functional group and the phosphate catalyst is hypothesized to facilitate the fluorination reaction.

Based on our previous success with amides as pendant nucleophiles, we posited that allylic amides could be employed as DGs for direct alkene fluorination to provide access to allylic fluoride products (23). The synthesis of enantioenriched allylic fluorides is a synthetic challenge for which only a handful of approaches have been disclosed. Recently reported general methods for the enantioselective synthesis of allylic fluorides include the reaction of allylic chlorides with palladium catalysts, and allylsilanes in cinchona alkaloid catalysis (24-27). Furthermore, we envisioned that, upon removal of the amide directing group, this method would provide access to enantioenriched β -fluoroamines bearing a fluorinated quaternary center, a privileged bioactive motif and longstanding synthetic challenge (28-33).

In initial experiments, enantioselective fluorination of substrates containing no hydrogen-bond donor functionality was attempted (23). As expected, in the absence of a suitable DG, enantioselectivities no higher than 10% ee were obtained. In stark contrast, under typical chiral

anion phase transfer conditions, allylic amide **1a** underwent fluorination to provide allylic fluoride **1b** in 82% yield and 85% ee, along with cyclized side product **1c** (Table 1, Entry 1). Switching the solvent to toluene increased selectivity for the desired allylic fluoride over **1c**, as well as enantioselectivity (Entry 2). Finally, use of the recently developed STRIP (**3**) in place of TRIP (**2**) as catalyst further increased enantioselectivity and chemoselectivity in favor of the desired allylic fluoride (Entry 3) (34). The crystal structure of STRIP confirms earlier suggestions that it may have a tighter binding pocket than TRIP, which may in turn contribute to the enhanced enantioselectivities observed for some systems. Interestingly, under homogeneous conditions (MeCN), cyclization product **1c** predominates, regardless of the presence of catalyst **3**, illustrating the unique reactivity achievable under anionic phase transfer conditions (Entries 4 and 5).



Entry	n	Catalyst	Solvent	1b:1c	% ee 1b/1b' (% ee 1c)
1	1	(<i>S</i>)-2	PhF	5:1	85 (48)
2	1	(<i>S</i>)-2	PhMe	8:1	89
3	1	(<i>R</i>)-3	PhMe	10:1	90
4	1	(<i>R</i>)-3	MeCN	1:4	0
5	1	none	MeCN	1:4	--
6	2	(<i>R</i>)-3	PhMe	--	12

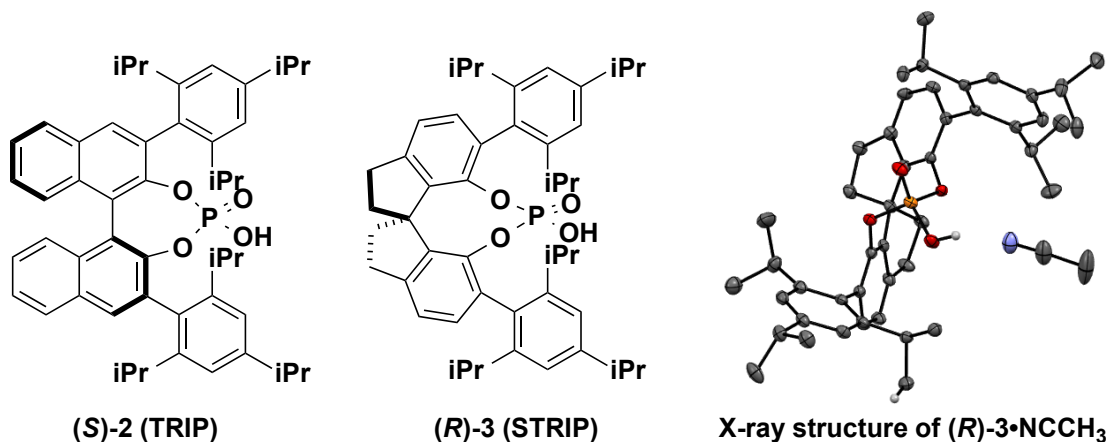


Table 1. Optimization of product distribution and enantioselectivity.

A few experiments and observations allowed us to gain some insight into the mechanism of this transformation. In accord with our hypothesis that a hydrogen bond donor is required to direct the fluorination, the *N*-methylated analog of **1a** was unreactive (<10% conversion) under otherwise identical conditions. Furthermore, homoallylic amide **1a'** reacted to deliver allylic fluoride **1b'** in only 12% ee, suggesting that there is a distance requirement for the directing group (Table 1, Entry 6). We considered several possible pathways in which **1b** could form from

1a (Figure 3). We first considered the possibility that allylic fluoride **1b** formed from E2 elimination of initially formed cyclization product **1c** (Figure 3a). However, subjecting **1c** to standard reaction conditions did not result in the formation of **1b**.

We next considered the possibility that a carbocationic intermediate could be formed upon initial fluorination, followed by loss of a proton to generate **1b** (Figure 3b). Indeed, previous studies of the kinetics of Selectfluor-mediated fluorofunctionalization of alkenes in polar solvents supported a stepwise mechanism involving the rate-determining formation of a fluorocarocation, followed by rapid nucleophilic trapping (35). On the basis of these studies, if a stepwise mechanism were operative in the allylic fluorination reaction, the formation of the fluorocarocation intermediate would be expected to be rate-determining as well, especially considering the low polarity of the reaction medium (toluene). Under this scenario the fluorination step would also be enantiodetermining, and products **1b** and **1c** should be formed with the same level of enantioselectivity. However, the observed enantioselectivity of cyclization product (**1c**) is considerably lower (48% ee) than that of the allylic fluoride (**1b**, 85% ee, Table 1, Entry 1). This observation suggests that fluorination to give **1b** is unlikely to take place through a stepwise fluorination-deprotonation mechanism. Therefore, we propose that this transformation most likely occurs through a concerted process in which fluorination and loss of proton, potentially assisted by the phosphate catalyst, occur in the same step (Figure 3c).

Mechanistic possibilities for the formation of 1b:

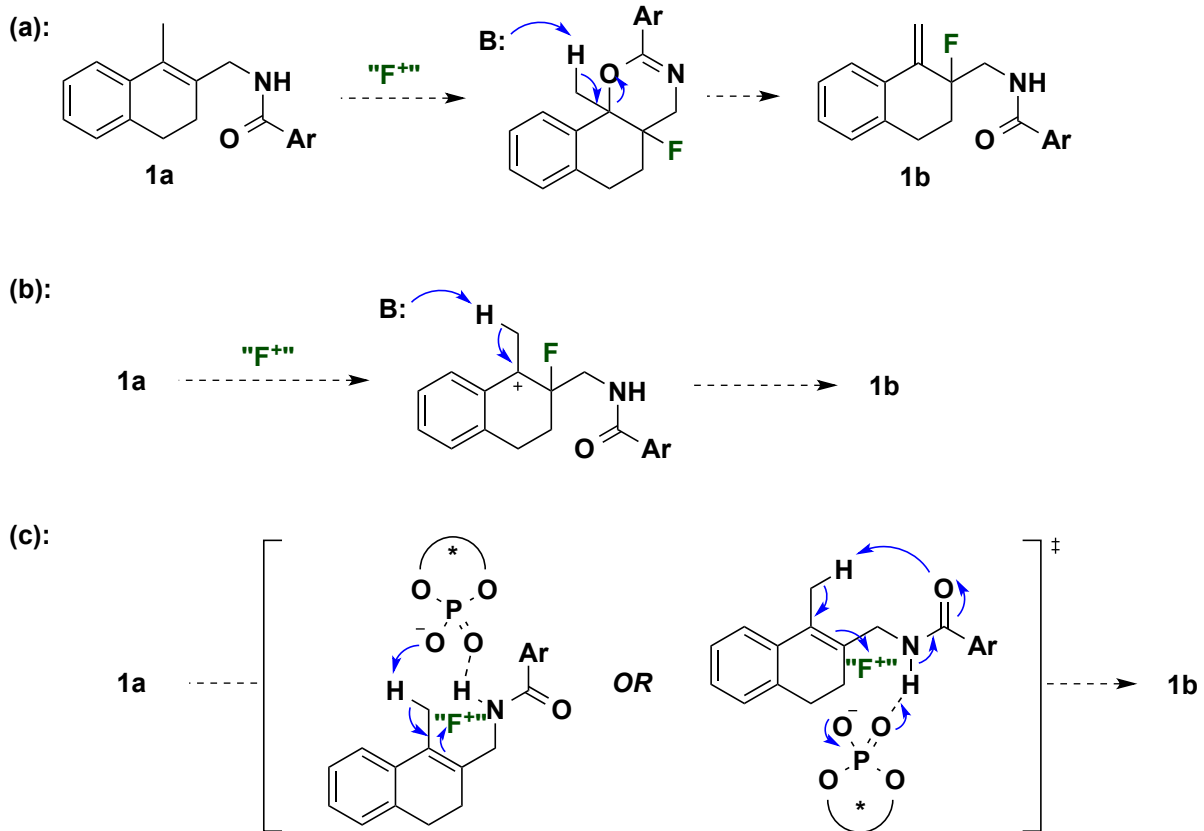
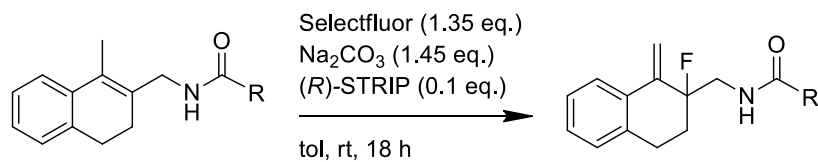


Figure 3. Possible mechanisms for the formation of allylic fluoride **1b** from substrate **1a**.



Entry	R=	ee (%)	Entry	R=	ee (%)
1		30	5		30
2		51	6		82
3		75	7		93
4		92			

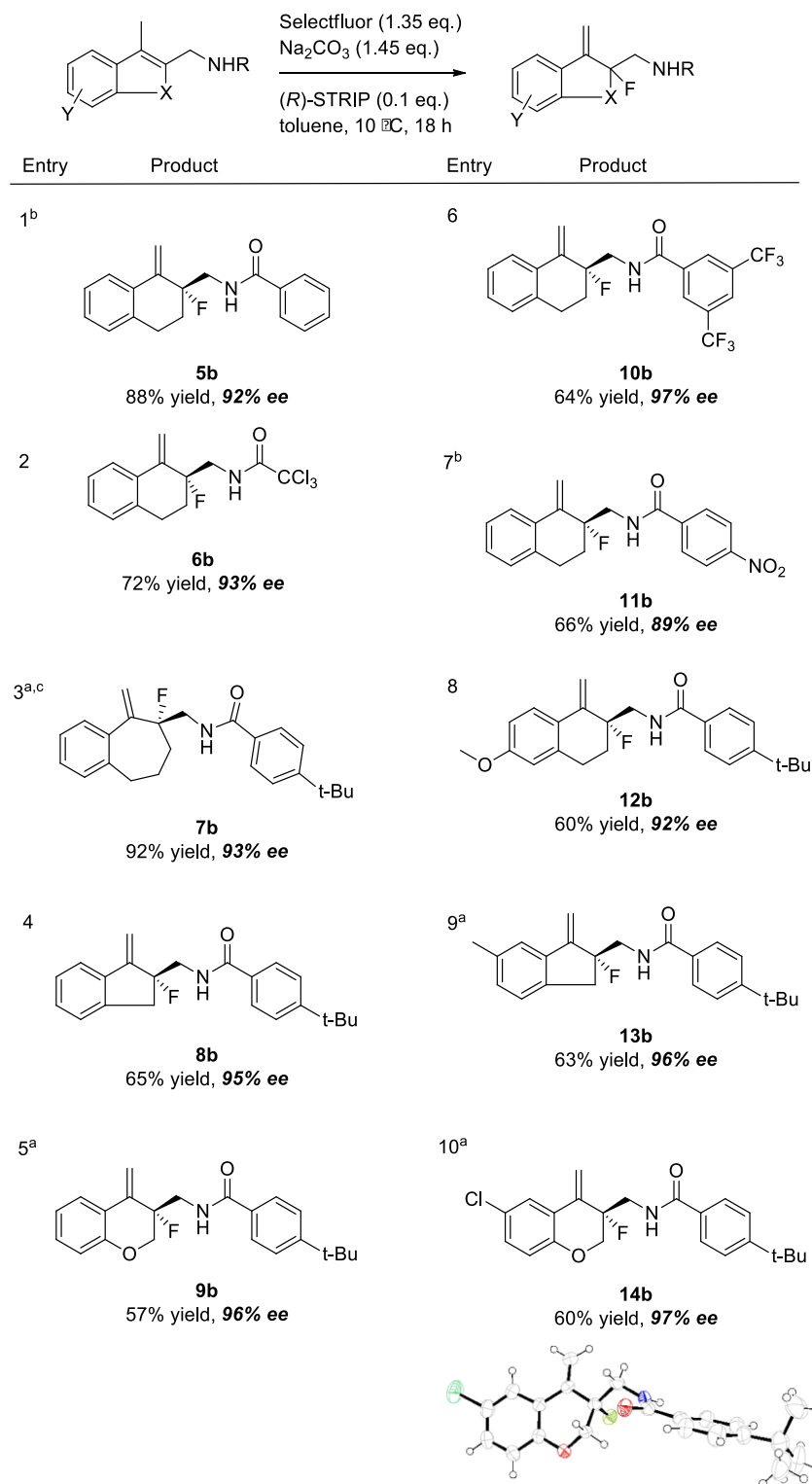
a) ee (%) determined by chiral HPLC with crude reaction product (<10:1 desired:cyclized by NMR)

Table 2. Studies on electronic and steric factors using amide DGs. Enantioselectivity generally increased with steric bulk on the amide.

We anticipated that better understanding of the properties required for an effective DG would aid identification of a readily cleaved amide DG. Thus, investigations of the impact of steric and electronic changes to amide DGs on enantioselectivity were performed (Table 2). Halogenated acetyl derivatives provided insight into the influence of changing electronegativity, while alkyl derivatives revealed the effect of electronically negligible changes in steric bulk. Increased enantioselectivity was observed with increased steric bulk (t-Bu > i-Pr > Me; Entries 1-3). Identical enantioselectivities achieved with CH₃ and CHF₂ substrates (Entries 1 and 5). It was, however, observed that one additional fluorine increased enantioselectivity dramatically (Entry 5 vs. 6). This may be due to a conformation attained with rotation of the CHF₂ group to minimize steric interactions that is not possible with the larger CF₃ group. In line with this proposal, an increase in size to CCl₃ (TCA) improved enantioselectivity to 93% ee. Thus, both steric and electronic parameters affect enantioselectivity, although steric factors may be more important. More substantial changes such as the use of the more electron-withdrawing p-

toluenesulfonamide (N-Ts) as the directing group provided product with 67% conversion by NMR analysis and only 18% ee. In addition to being highly efficient for the desired transformation, the TCA group was readily hydrolyzed with potassium hydroxide to provide free amine in 90% yield with no racemization of the fluorinated stereocenter, thus allowing access to primary β -fluoroamines and potential derivatives not necessarily containing the DGs presented here (Figure 3).

In addition to the studies described above, substrates with different ring sizes, benzamide substitution patterns, substitutions on the bicyclic core, and heterocyclic substrates were examined (Table 3). With modifications to dihydronaphthalene derived substrate **5a**, we found that both 3,5- and 4-position substitution patterns of strongly electron-withdrawing groups on the benzamide were well tolerated (Entries 6, 7). Good yields and high enantioselectivities were maintained with benzosuberene and indene derived substrates, allowing access to a variety of ring sizes (Entries 3 and 4). Neither electron-withdrawing nor electron-donating groups present on the fused benzene ring resulted in diminished enantioselectivity, (Entry 8 and 10). Fluorination of chromanone-derived heterocyclic substrates **9a** and **14a** proceeded with good yield and high enantioselectivity (96% ee and 97% ee, respectively).



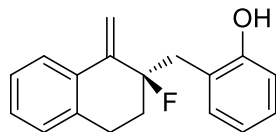
a) Reaction run at room temperature. b) Product isolated with cyclized by-product in 10:1 ratio. c) Reaction run for 36 h. d) All stereochemistry defined in analogy to compound **14b** (see Supporting information for crystallography details)

Table 3. Scope of amide DG substrates.

In addition to amides, 2-hydroxyphenyl was found to be a suitable DG to promote enantioselective fluorination of a variety of alkenes under identical reaction conditions (Table 4). We had recently seen phenol act as a competent hydrogen-bond donor in enantioselective fluorination and dearomatization reactions (36). In the examples shown here we observe that increased substitution on the alkene changes the chemoselectivity, and fluorination on the alkene is seen exclusively rather than fluorination of the phenol. Both β -phenolic tertiary and quaternary fluorides with alkyl, aryl, or heteroaryl substituents were obtained with good to high enantioselectivity. Further, fluorinated piperidine product **19b** can be obtained in moderate yield and enantioselectivity - a facile synthesis of a fluorinated scaffold that has been previously shown to be a privileged core of various biologically active compounds (37). In agreement with previous results, conversion was severely diminished (< 10%) when the phenol group was methylated, presumably due to the inability of the methyl ether moiety to effectively participate in hydrogen-bonding with the catalysts. We anticipate that the enantioselective construction of both β -amino and β -aryl sp³-C-F bonds will be valuable in drug discovery (38).

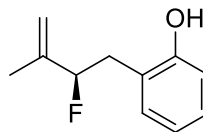
Phenol Substrates^a

1



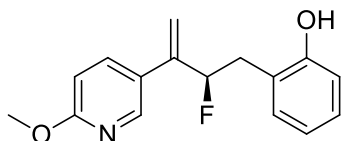
15b
78% yield, **76% ee**

4

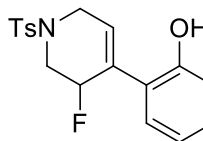


18b
72% yield, **89% ee**

2

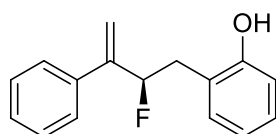


16b
56% yield, **88% ee**

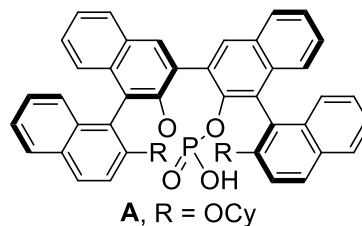
5^{b,c}

19b
63% yield, **77% ee**

3



17b
83% yield, **92% ee**



a) Selectfluor (1.35 eq), Na₂CO₃ (1.45 eq), (*R*)-STRIP (0.1 eq), toluene, room temperature, 18 h. b) Reaction run 36 h. c) Catalyst **A** (Ref. 39) used instead of (*R*)-STRIP.

Table 4. 2-Hydroxyphenyl DG effective for various alkenes.

Our previously reported electrophilic bromination reagent **22** (**19**) could be used to further functionalize the product from the title reaction via bromocyclization. This reaction shows the capability of chiral anion phase-transfer catalysis to operate sequentially in one pot to facilitate orthogonal reactions through the use of reagents with differing reactivity. While Selectfluor did not further react with fluorination product **8b**, it was found that bromocyclization of **8b** took place in the presence of reagent **22** under phase-transfer conditions. With phase-transfer bromination verified step-wise, **8a** was subjected to the standard fluorination conditions for 18 h (“F⁺”), followed by addition of **22** (“Br⁺”) and one equivalent of base. (This was operationally simple: the cap to the vial was opened and **22** was added without exclusion of air.) Gratifyingly, indeno-1,3-oxazine **20** formed in good yield and high diastereo- and

enantioselectivity with the creation of two adjacent stereocenters and two carbon-halogen bonds. Heterocyclic substrate **14a** also underwent fluorination with high selectivity, providing highly functionalized tricyclic product **21** (Figure 4).

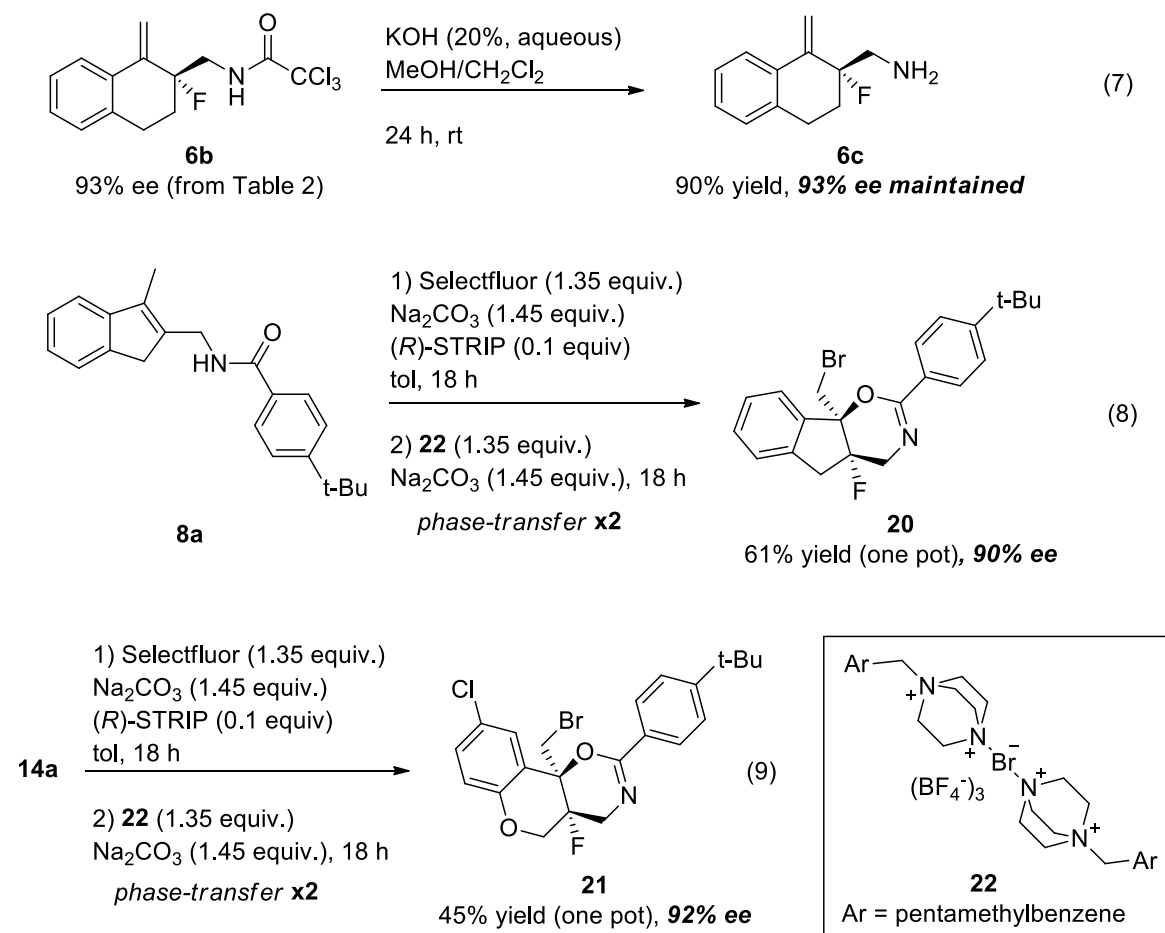


Figure 4. Further reactions with fluorinated products.

A catalytic, enantioselective direct fluorination of alkenes to provide a variety of β -amino and β -phenolic allylic fluorides has been presented. The utilization of solid-liquid chiral anion phase-transfer catalysis and the implementation of DGs were instrumental to achieving enantioselectivity. More generally, the ability of chiral phosphate anions to interact with the cationic electrophiles and with the substrate DG's through hydrogen bonding offers the potential to greatly expand the scope of electrophilic alkene functionalization reactions.

Supporting Information.

Further details on the synthesis and characterization, and crystal structures of compounds **14b**

and **17b** is given in the supporting information on the PNAS web site.

Acknowledgements

We are grateful to the University of California for financial support. Y.M.W. thanks Amgen for a graduate fellowship and R.J.P. thanks to the European Commission for a Marie Curie International Outgoing Fellowship. Authors thank Natalja Früh and Hunter Shunatona for synthesis of some intermediate materials.

References

- (1) Hoveyda A H, Evans D A, Fu G C (1993) Substrate-directable chemical reactions. *Chem Rev* 93(4):1307-1370.
- (2) Engle K M, Mei T-S, Wasa M, Yu J-Q (2012) Weak Coordination as a Powerful Means for Developing Broadly Useful C-H Functionalization Reactions. *Acc Chem Res* 45(6):788-802.
- (3) Colby D A, Tsai A S, Bergman R G, Ellman J A (2012) Rhodium Catalyzed Chelation-Assisted C-H Bond Functionalization Reactions. *Acc Chem Res* 45(6):814-825.
- (4) Zhang X-G, Dai H-X, Wasa M, Yu J-Q (2012) Pd(II)-Catalyzed Ortho Trifluoromethylation of Arenes and Insights into the Coordination Mode of Acidic Amide Directing Groups. *J Am Chem Soc* 134(29):11948-11951.
- (5) Neufeldt, S R, Sanford, M S (2012) Controlling Site Selectivity in Palladium Catalyzed C-H Bond Functionalization. *Acc Chem Res* 45(6):936-946.
- (6) Zhu C, Wang R, Falck J R (2012) Amide Directed Tandem C-C/C-N Bond Formation through C-H Activation. *Chem Asian J* 7(7):1502-1514.
- (7) Vasbinder M M, Jarvo, E R, Miller, S J (2001) Incorporation of Peptide Isosteres into Enantioselective Peptide-Based Catalysts as Mechanistic Probes. *Angew Chem Int Ed* 40(15): 2824-2827.
- (8) Peris G, Jakobsche C E, Miller S J (2007) Aspartate-Catalyzed Asymmetric Epoxidation Reactions. *J Am Chem Soc* 129(28):8710-8711.
- (9) Jakobsche, C E; Peris G; Miller S J (2008) Functional Analysis of an Aspartate-Based Epoxidation Catalyst with Amide-to-Alkene Peptidomimetic Catalyst Analogues. *Angew Chem Int Ed* 47(35): 6707-6711.
- (10) Tan K L (2011) Induced Intramolecularity: An Effective Strategy in Catalysis. *ACS*

Catalysis 1(8):877-886.

- (11) Phipps R J, Hamilton, G L, Toste F D (2012) The Progression of Chiral Anions from Concepts to Applications in Asymmetric Catalysis. *Nat Chem* 4:603-614.
- (12) Mahlau M, List, B (2013) Asymmetric Counteranion-Directed Catalysis: Concept, Definition, and Applications. *Angew Chem Int Ed*, 52(2):518-533.
- (13) Brak K, Jacobsen E N (2013) Asymmetric Ion-Pairing Catalysis. *Angew Chem Int Ed*, 52(2):534-561.
- (14) Simon L, Goodman J M (2011) A Model for the Enantioselectivity of Imine Reactions Catalyzed by BINOL-Phosphoric Acid Catalysts. *J Org Chem* 76(6):1775-1788.
- (15) Hamilton G L, Kang E J, Mba M, Toste F D (2007) A Powerful Chiral Counterion Strategy for Asymmetric Transition Metal Catalysis. *Science*, 317: 496-499.
- (16) Hamilton G L, Kanai T, Toste F D (2008) Chiral Anion-Mediated Asymmetric Ring Opening of *meso*-Aziridinium and Episulfonium Ions. *J Am Chem Soc*, 130(45): 14984-14986.
- (17) Liao S, List B (2010) Asymmetric Counterion-Directed Transition-Metal Catalysis: Enantioselective Epoxidation of Alkenes with Manganese(III) Salen Phosphate Complexes. *Angew Chem Int Ed* 49(3):628-631.
- (18) Rauniyar V, Lackner A D, Hamilton G L, Toste F D (2011) Asymmetric Electrophilic Fluorination Using an Anionic Chiral Phase-Transfer Catalyst. *Science* 334(6063):1681-1684.
- (19) Wang Y-M, Wu J, Hoong C, Rauniyar V, Toste F D (2012) Enantioselective Halocyclization Using Reagents Tailored for Chiral Anion Phase-Transfer Catalysis. *J Am Chem Soc* 134(31): 12928-12931.
- (20) Shunatona H P, Früh N, Wang Y-M, Rauniyar V, Toste F D (2013) Enantioselective Fluoroamination: 1,4-Addition to Conjugated Dienes Using Anionic Phase-Transfer Catalysis. *Angew Chem Int Ed* DOI: 10.1002/anie.201302002.
- (21) Honjo T, Phipps R J, Rauniyar V, Toste F D (2012) A Doubly Axially Chiral Phosphoric Acid Catalyst for the Asymmetric Tandem Oxyfluorination of Enamides. *Angew Chem Int Ed*, 51(38):9684-9688.
- (22) Phipps R J, Hiramatsu K, Toste, F D (2012) Asymmetric Fluorination of Enamides: Access to α -Fluoroimines Using an Anionic Chiral Phase-Transfer Catalyst. *J Am Chem Soc* 134(20): 8376-8379.

- (23) Luo H-Q, Loh T-P (2009) Synthesis of aryl allylic fluorides by direct electrophilic fluorination of alkenes. *Tet Lett* 50(14):1554-1556.
- (24) Katcher M H, Sha A, Doyle A G (2011) Palladium-Catalyzed Regio- and Enantioselective Fluorination of Acyclic Allylic Halides. *J Am Chem Soc* 133(40):15902-15905.
- (25) Ishimaru T, Shibata N, Horikawa T, Yasuda N, Nakamura S, Toru T, Shiro M (2008) Cinchona Alkaloid Catalyzed Enantioselective Fluorination of Allyl Silanes, Silyl Enol Ethers, and Oxindoles. *Angew Chem Int Ed* 47(22):4157-4161.
- (26) Tredwell M, Tenza K, Pacheco M C, Gouverneur V (2005) Synthesis of Novel Enantiopure Fluorinated Building Blocks from Acyclic Chiral Allylsilanes. *Org Lett* 7(20):4495-4497.
- (27) Katcher M H, Doyle A G (2010) Palladium-Catalyzed Asymmetric Synthesis of Allylic Fluorides. *J Am Chem Soc* 132(49):17402-17404.
- (28) For a review: Pacheco M H, Purser S, Gouverneur V (2008) The Chemistry of Propargylic and Allylic Fluorides. *Chem Rev* 108(6):1943-1981.
- (29) Brunet V A, O'Hagan D (2008) Catalytic asymmetric fluorination comes of age. *Angew Chem Int Ed* 47(7):1179-1182.
- (30) Lectard S, Hamashima Y, Sodeoka M (2010) Recent Advances in Catalytic Enantioselective Fluorination Reactions. *Adv Synth Catal* 352(16):2708-2732.
- (31) Duthion B, Pardo D G, Cossy J (2010) Enantioselective Synthesis of β -Fluoroamines from β -Amino Alcohols: Application to the Synthesis of LY503430. *Org Lett* 12(20):4620-4623.
- (32) Kalow J A, Schmitt D E, Doyle A G (2012) Synthesis of β -Fluoroamines by Lewis Base Catalyzed Hydrofluorination of Aziridines. *J Org Chem* 77(8):4177-4183.
- (33) Fadeyi O O, Lindsley C W (2009) Rapid, General Access to Chiral β -Fluoroamines and β,β -Difluoroamines via Organocatalysis. *Org Lett* 11(4):943-946.
- (34) Coric I, Mueller S, List B (2010) Kinetic Resolution of Homoaldols via Catalytic Asymmetric Transacetalization. *J Am Chem Soc* 132(49):17370-17373.
- (35) Papež-Iskra M, Zupan M, Stavber S (2005) The Effect of Reaction Conditions on Activation Parameters for the Mild Introduction of Fluorine into Phenyl Substituted Alkenes with *Selectfluor*TM F-TEDA-BF₄. *Acta Chim Slov* 52(3): 200-206.
- (36) Phipps, R J, Toste, F D (2013) Chiral Anion Phase-Transfer Catalysis Applied to the

Direct Enantioselective Fluorinative Dearomatization of Phenols *J Am Chem Soc* 135(4):1268-1271.

(37) Chang M-Y, Lee N-C, Lee M-F, H Y-P, L C-H (2010) Selectfluor-Promoted Fluorination of Piperidinyll Olefins. *Tet Lett* 51(45): 5900-5903.

(38) Hagman W K (2008) The Many Roles for Fluorine in Medicinal Chemistry. *J Med Chem* 51(15):4359-4369.

(39) Guo Q-S, Du D-M, Xu, J (2008) The Development of Double Axially Chiral Phosphoric Acids and Their Catalytic Transfer Hydrogenation of Quinolines. *Angew Chem Int Ed* 47(4): 759-762.