

# Lawrence Berkeley National Laboratory

## LBL Publications

### Title

LRL 25-Inch Bubble Chamber

### Permalink

<https://escholarship.org/uc/item/07q1j9hc>

### Authors

Alvarez, Luis W

Gow, J D

Barrera, Frank

et al.

### Publication Date

1964-07-01

UCRL-11521

**University of California**  
**Ernest O. Lawrence**  
**Radiation Laboratory**

LRL 25-INCH BUBBLE CHAMBER

**TWO-WEEK LOAN COPY**

*This is a Library Circulating Copy  
which may be borrowed for two weeks.  
For a personal retention copy, call  
Tech. Info. Division, Ext. 5545*

**Berkeley, California**

## **DISCLAIMER**

This document was prepared as an account of work sponsored by the United States Government. While this document is believed to contain correct information, neither the United States Government nor any agency thereof, nor the Regents of the University of California, nor any of their employees, makes any warranty, express or implied, or assumes any legal responsibility for the accuracy, completeness, or usefulness of any information, apparatus, product, or process disclosed, or represents that its use would not infringe privately owned rights. Reference herein to any specific commercial product, process, or service by its trade name, trademark, manufacturer, or otherwise, does not necessarily constitute or imply its endorsement, recommendation, or favoring by the United States Government or any agency thereof, or the Regents of the University of California. The views and opinions of authors expressed herein do not necessarily state or reflect those of the United States Government or any agency thereof or the Regents of the University of California.

Rept. sub. to the International Conf.  
on High Energy Physics, Dubna,  
U. S. S. R., Aug. 5-15, 1964.

UCRL-11521

Rept. also sub. for pub. in the  
Proceedings.

UNIVERSITY OF CALIFORNIA

Lawrence Radiation Laboratory  
Berkeley, California

AEC Contract No. W-7405-eng-48

LRL 25-INCH BUBBLE CHAMBER

Luis W. Alvarez, J. D. Gow, Frank Barrera, Glenn Eckman,  
Jim Shand, R. Watt, Duane Norgren, and H. P. Hernandez

July 8, 1964

LRL 25-INCH BUBBLE CHAMBER\*‡

Luis W. Alvarez, J. D. Gow,<sup>≡</sup> Frank Barrera, Glenn Eckman,  
Jim Shand, R. Watt, Duane Norgren, and H. P. Hernandez

Lawrence Radiation Laboratory  
University of California  
Berkeley, California

(Presented by Sulamith Goldhaber)

July 8, 1964

I. INTRODUCTION

The recently completed 25-inch hydrogen bubble chamber combines excellent picture quality with a fast operating cycle. The chamber has a unique optical system and is designed to take several pictures each Bevatron pulse, in conjunction with the Bevatron rapid beam ejection system. At present the chamber operates twice per Bevatron pulse. The general features of the chamber construction are shown in Figs. 1 and 2. The chamber is ten inches deep at the narrowest point. The magnet is of conventional water cooled design and in present operation produces a vertical field of 18.5 kgauss. With suitable generators it has produced a field of 22.8 kgauss. The most important new features are discussed below:

A. Expansion System

Unique to this chamber is a movable top window which serves as the piston for the liquid expansion system and as an optical condenser lens. The system operates through a pressure multiplier driven by helium gas. The pressure

---

\* This paper is based on Report No. UCRL-11384.

‡ Work sponsored by the U. S. Atomic Energy Commission.

≡ Deceased.



multiplier incorporates a gas spring which serves the following purposes:

1. To absorb the impact on expansion.
2. To provide adjustment for control of the expansion pressure.
3. To store much of the expansion energy (~80%). This feature is of importance for rapid cycling of the chamber.

### B. Optical System

The optical system is shown in Fig. 3. The principal features are axial placement of the light source, the aspheric condenser and a generous stereo base (one half of the object distance). The aspheric condenser lens system is believed to be several times more efficient than any installed in earlier bubble chambers of this size. A scattering angle of  $12^\circ$  gives good uniformity of illumination in depth so that individual light sources for each stereo view are unnecessary.

The design of the camera was largely determined by the requirements of rapid pulsing. The camera utilizes a system of differential film drive capstans and an internally sensed programmed electric clutch. High speed vacuum platens were developed to clamp the film during exposure. The camera provides reference marks for the Flying Spot Digitizer and takes three stereo views on one 46 mm unperforated film.

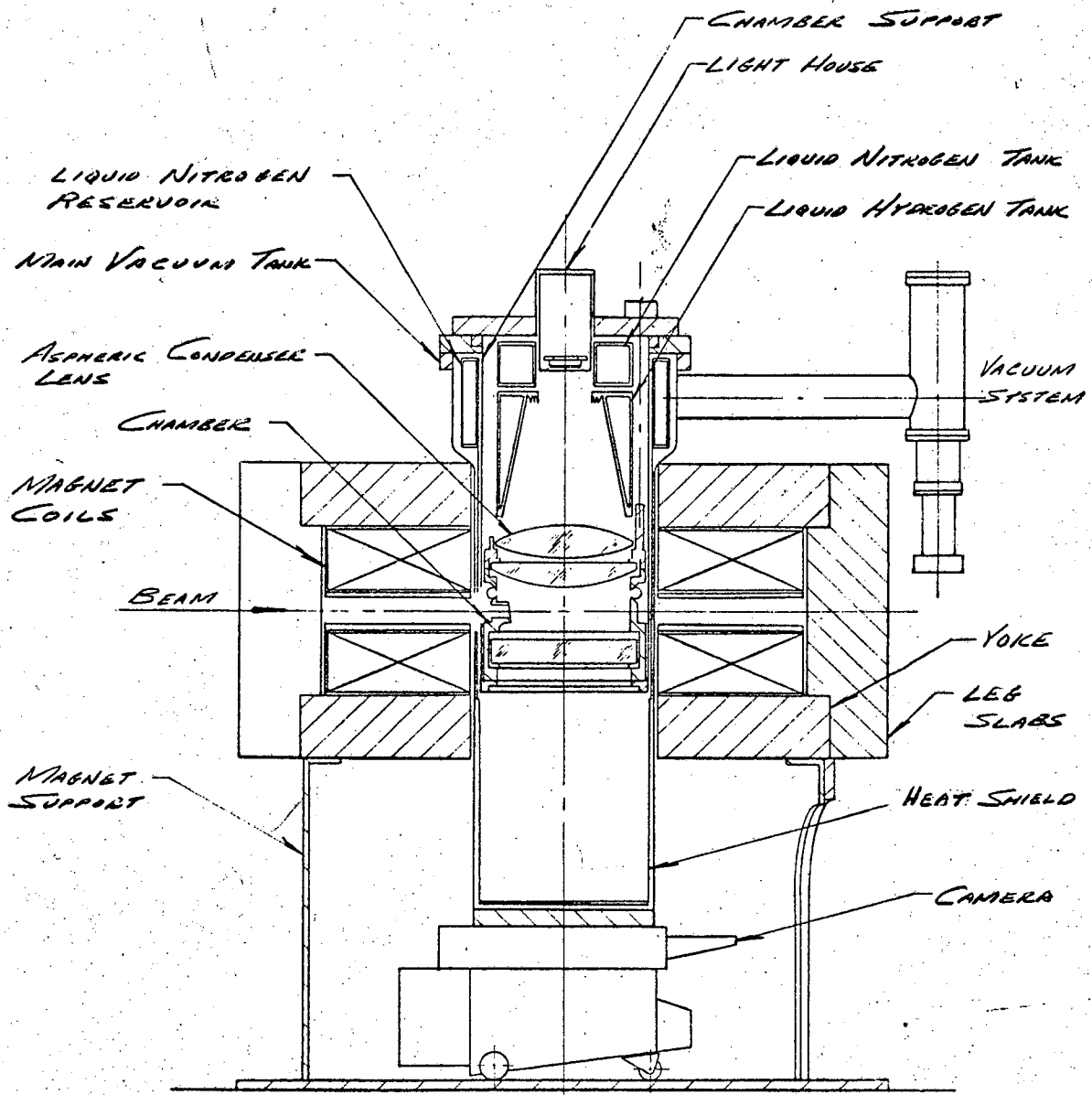
### C. Performance

The chamber has been operated filled with both hydrogen and deuterium. The Bevatron at present can produce two rapid beam ejections per pulse, and of the 700,000 pictures taken to date in hydrogen, 265,000 have been taken in this double pulse mode. Limitations on double pulsing are imposed at

present only by the requirement of compatibility when several experiments are simultaneously in operation at the Bevatron. At present the two pulses are separated by 275 msec. The picture quality is comparable on each of the two independently-controlled expansions.

FIGURE CAPTIONS

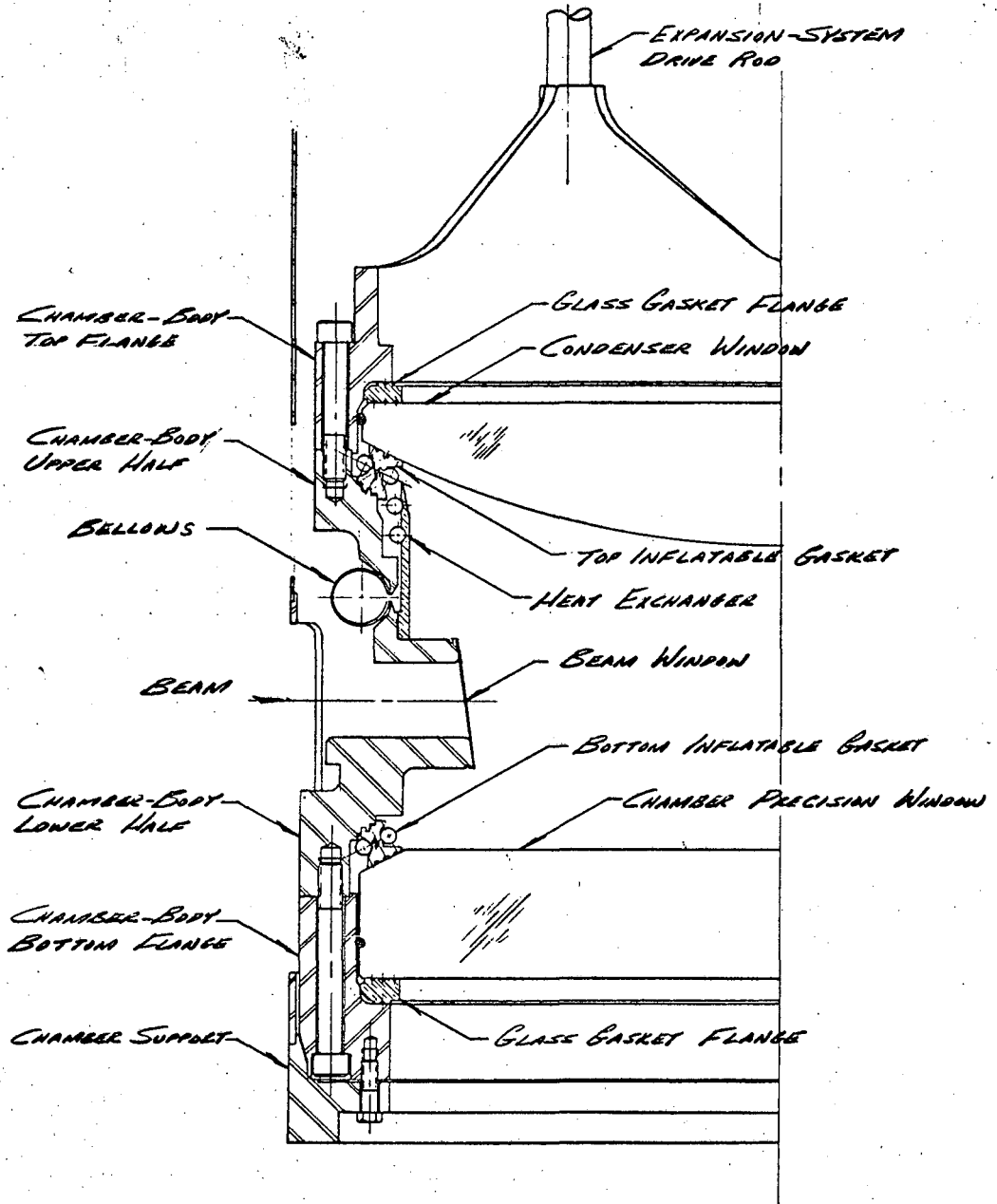
- Fig. 1. The 25-inch bubble chamber and magnet.
- Fig. 2. Detail of the 25-inch bubble chamber.
- Fig. 3. Optical system of the 25-inch bubble chamber.
- Fig. 4. First pulse 25-inch bubble chamber photograph.
- Fig. 5. Second pulse 25-inch bubble chamber photograph.



MUB-2970

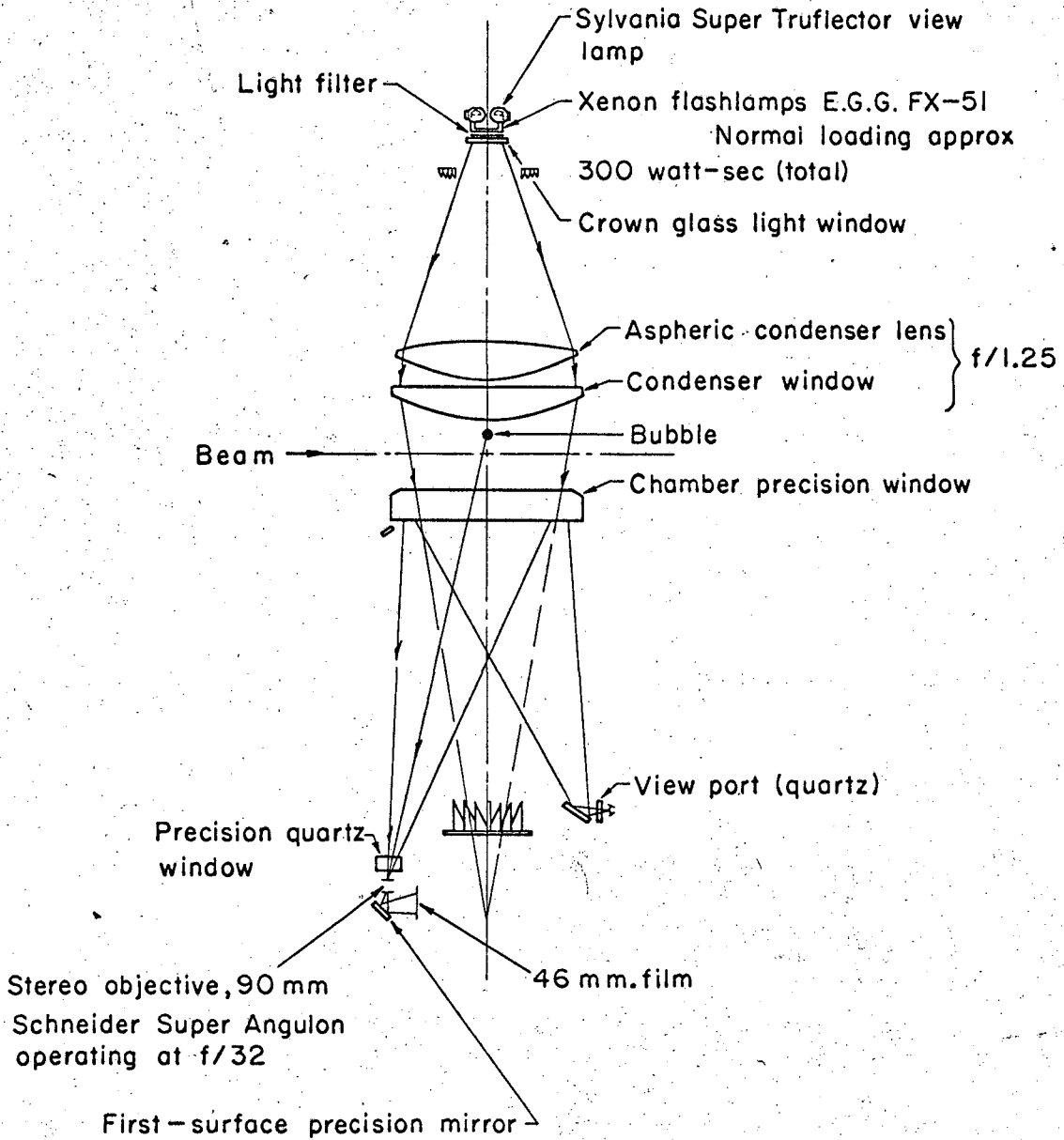
Figure 1.





MUB-2971

Figure 2.



MUB-3380

Figure 3.

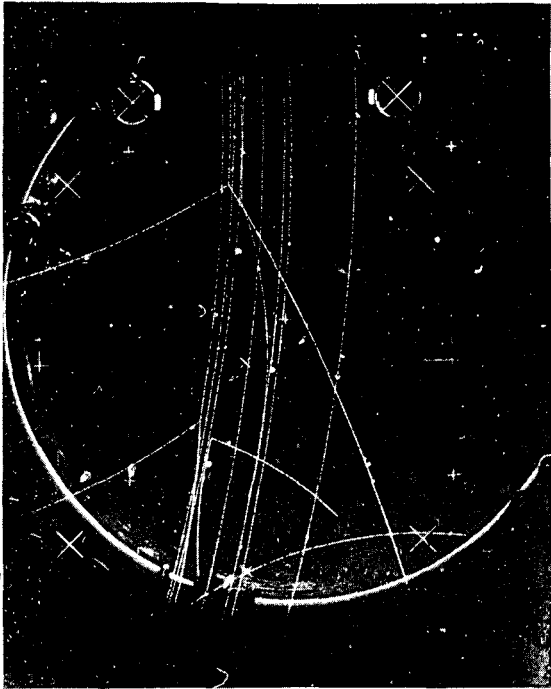


Figure 4.

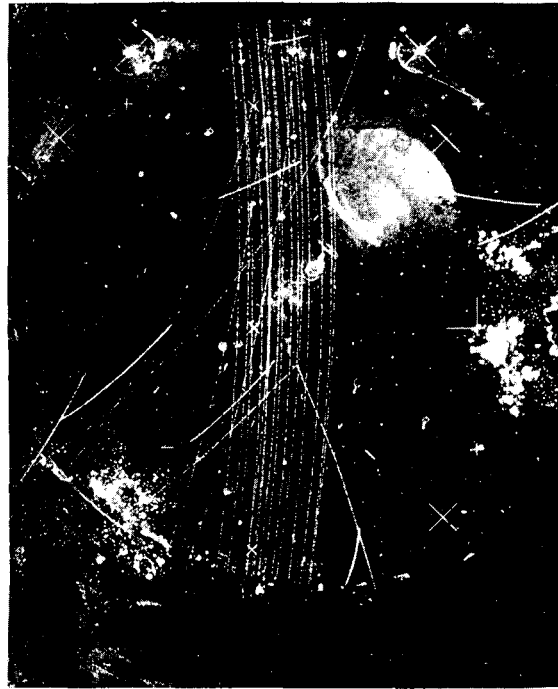


Figure 5.

ZN-4398

This report was prepared as an account of Government sponsored work. Neither the United States, nor the Commission, nor any person acting on behalf of the Commission:

- A. Makes any warranty or representation, expressed or implied, with respect to the accuracy, completeness, or usefulness of the information contained in this report, or that the use of any information, apparatus, method, or process disclosed in this report may not infringe privately owned rights; or
- B. Assumes any liabilities with respect to the use of, or for damages resulting from the use of any information, apparatus, method, or process disclosed in this report.

As used in the above, "person acting on behalf of the Commission" includes any employee or contractor of the Commission, or employee of such contractor, to the extent that such employee or contractor of the Commission, or employee of such contractor prepares, disseminates, or provides access to, any information pursuant to his employment or contract with the Commission, or his employment with such contractor.

[The page contains extremely faint, illegible text, likely bleed-through from the reverse side of the document.]

