

UC Davis

UC Davis Previously Published Works

Title

Bintrafusp Alfa: A Bifunctional Fusion Protein Targeting PD-L1 and TGF- β , in Patients with Pretreated Colorectal Cancer: Results from a Phase I Trial

Permalink

<https://escholarship.org/uc/item/06p832pj>

Journal

The Oncologist, 28(2)

ISSN

1083-7159

Authors

Spira, Alexander
Wertheim, Michael S
Kim, Edward J
et al.

Publication Date

2023-02-08

DOI

10.1093/oncolo/oyac254

Copyright Information

This work is made available under the terms of a Creative Commons Attribution License, available at <https://creativecommons.org/licenses/by/4.0/>

Peer reviewed

Bintrafusp Alfa: A Bifunctional Fusion Protein Targeting PD-L1 and TGF- β , in Patients with Pretreated Colorectal Cancer: Results from a Phase I Trial

Alexander Spira^{*1}, Michael S. Wertheim², Edward J. Kim³, Benjamin Tan⁴, Heinz-Josef Lenz⁵, Petros Nikolinakos⁶, Patricia L. Rich⁷, Genevieve Jehl⁸, Andreas Machl⁹, Rena Ito¹⁰, James L. Gulley¹¹, Scott Kopetz¹²

¹US Oncology Research, Fairfax, VA, USA

²Hematology Oncology Associates of the Treasure Coast, FL, USA

³Department of Internal Medicine, UC Davis Comprehensive Cancer Center, Sacramento, CA, USA

⁴Department of Medicine, Washington University School of Medicine, Siteman Cancer Center, St. Louis, MO, USA

⁵Department of Medicine, Keck School of Medicine, University of Southern California Norris Comprehensive Cancer Center, Los Angeles, CA, USA

⁶University Cancer & Blood Center, Athens, GA, USA

⁷Cancer Treatment Centers of America, Southeastern Regional Medical Center, Newnan, GA, USA

⁸Merck Healthcare KGaA, Darmstadt, Germany

⁹EMD Serono Research & Development Institute, Billerica, MA, USA, an affiliate of Merck KGaA

¹⁰Merck Biopharma Co., Ltd., Tokyo, Japan, an affiliate of Merck KGaA

¹¹Center for Cancer Research, National Cancer Institute, National Institutes of Health, Bethesda, MD, USA

¹²Department of Gastrointestinal Medical Oncology, Division of Cancer Medicine, The University of Texas MD Anderson Cancer Center, Houston, TX, USA

*Corresponding author: Alexander Spira, MD, PhD, FACP, 8503 Arlington Boulevard, Suite 400, Fairfax, VA 22031, USA, Tel: +1 703 280 5390; Fax: +1 703 280 9596; Email: alexander.spira@usoncology.com

Abstract

Colorectal cancer (CRC) is a heterogeneous and complex disease with limited treatment options. Targeting transforming growth factor β (TGF- β) and programmed death ligand 1 pathways may enhance antitumor efficacy. Bintrafusp alfa is a first-in-class bifunctional fusion protein composed of the extracellular domain of TGF- β receptor II (a TGF- β “trap”) fused to a human IgG1 monoclonal antibody blocking programmed cell death ligand 1. We report results from an expansion cohort of a phase I study (NCT02517398) in patients with heavily pretreated advanced CRC treated with bintrafusp alfa. As of May 15, 2020, 32 patients with advanced CRC had received bintrafusp alfa for a median duration of 7.1 weeks. The objective response rate was 3.1% and the disease control rate was 6.3% (1 partial response, 1 stable disease); 2 patients were not evaluable. The safety profile was consistent with previously reported data.

Key words: colorectal cancer; bintrafusp alfa; phase I.

Introduction

Colorectal cancer (CRC) is a heterogeneous and complex disease with widely variable clinical outcomes.¹ Although recent advances in systemic therapy for metastatic CRC (mCRC) have improved outcomes for patients with certain biomarkers, most patients receive chemotherapy \pm bevacizumab, and the 5-year survival rate is only 14.7%.^{2,3} Programmed cell death 1 (PD-1)/programmed cell death ligand 1 (PD-L1) therapies have shown activity in patients with mismatch repair-deficient (dMMR) or microsatellite instability-high (MSI-H) CRC.² However, patients with mismatch repair-proficient (pMMR) or microsatellite stable (MSS) CRC (80%–90% of patients) do not respond to PD-1 blockade alone.¹ Limited activity may be due to mechanisms of resistance with PD-(L)1 and interplay with other pathways.^{4,5}

Increased expression of transforming growth factor β (TGF- β) is associated with poor prognosis in CRC and contributes to the lack of response to PD-L1 blockade.^{4,5} Therefore, simultaneous inhibition of TGF- β and PD-L1 pathways may overcome anti-PD-(L)1 resistance and enhance antitumor efficacy in patients with CRC. Bintrafusp alfa is a first-in-class bifunctional fusion protein composed of the extracellular domain of the human TGF- β receptor II (a TGF- β “trap”) fused via a flexible linker to the C terminus of each heavy chain of an IgG1 antibody blocking PD-L1, which might allow for simultaneous inhibition of TGF- β and PD-L1 in the tumor microenvironment.⁶ In a phase I study (NCT02517398), bintrafusp alfa has shown early signs of clinical efficacy and a manageable safety profile in patients with heavily pretreated solid tumors.⁷ Here, we report results from an expansion cohort of this phase I study.

Received: 22 July 2022; Accepted: 27 October 2022.

© The Author(s) 2022. Published by Oxford University Press.

This is an Open Access article distributed under the terms of the Creative Commons Attribution License (<https://creativecommons.org/licenses/by/4.0/>), which permits unrestricted reuse, distribution, and reproduction in any medium, provided the original work is properly cited.

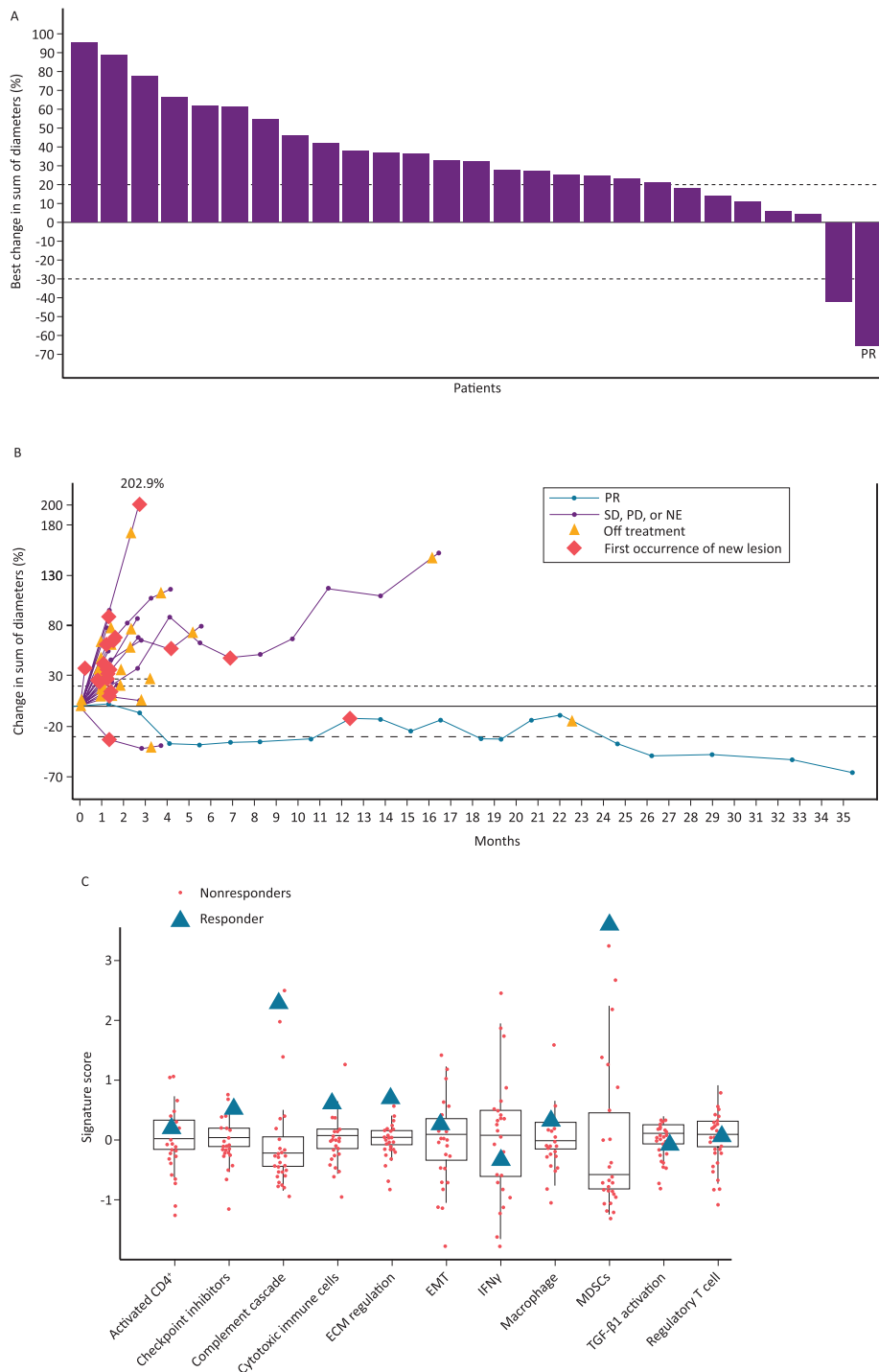


Figure 1. (A) Percent change in diameter from baseline in target lesions, as assessed by IRC per RECIST 1.1. (B) Percent change in target lesion diameter from baseline to best postbaseline value, as assessed by IRC per RECIST 1.1. (C) Patient gene signatures by RNAseq. The patient with a PR had colorectal cancer that was microsatellite stable, mesenchymal subtype (consensus molecular subtype 4), *KRAS* mutant, and PD-L1 positive (PD-L1 \geq 1% tumor cell expression by immunohistochemistry). A higher signature score for complement cascade and myeloid-derived suppressor cells was observed. Of 32 patients who received bintrafusp alfa, 2 patients were not evaluable by IRC due to no IRC review ($n = 1$) and SD (or better) of insufficient duration (<6 weeks after start date without further evaluable tumor assessment) ($n = 1$). Abbreviations: IRC, independent review committee; RECIST, Response Evaluation Criteria in Solid Tumors; PR, partial response; SD, stable disease; PD, progressive disease; NE, not evaluable; ECM, extracellular matrix; EMT, epithelial to mesenchymal transition; IFN γ , interferon γ ; MDSC, myeloid-derived suppressor cell; TGF- β , transforming growth factor β .

Materials and Methods

In this open-label, global, phase I trial, adult patients with histologically confirmed advanced adenocarcinoma of the colon or rectum that progressed during or after second-line

treatment, an Eastern Cooperative Oncology Group performance status of 0 or 1, and measurable disease per Response Evaluation Criteria in Solid Tumors (RECIST) version 1.1 were included. Patients must have had disease progression

while receiving fluoropyrimidine, oxaliplatin, irinotecan, and bevacizumab, and cetuximab or panitumumab (for *RAS* wild-type tumors). Patient selection was not based on MSI, consensus molecular subtype (CMS), or PD-L1 status. Patients received bintrafusp alfa 1200 mg every 2 weeks until confirmed progressive disease (PD), unacceptable toxicity, or trial withdrawal.

The primary endpoint was confirmed best overall response (BOR) according to RECIST 1.1, as assessed by an independent review committee (IRC). The key secondary endpoint was safety, with adverse events coded according to Medical Dictionary for Regulatory Activities terms version 21.0 and classified by grade according to the National Cancer Institute Common Terminology Criteria for Adverse Events version 4.03. Exploratory endpoints included progression-free survival (PFS), overall survival (OS), and duration of response (Supplementary Methods S1).

Results

As of May 15, 2020, 32 patients with advanced CRC had received bintrafusp alfa for a median duration of 7.1 (range, 2.0-100.0) weeks. Median follow-up was 185 (range, 3-185) weeks. All patients had discontinued treatment by the data cutoff. Overall, 87.5% of patients had ≥ 3 prior anticancer therapies, and 81.3% had $< 1\%$ tumor PD-L1 expression (Supplementary Table S1).

In the 30 evaluable patients, 1 had a confirmed partial response (PR), 1 had stable disease, and 28 had PD as BOR per IRC (Fig. 1A, B). The confirmed objective response rate (ORR) was 3.1% (95% CI, 0.1-16.2), with a disease control rate (DCR) of 6.3% (95% CI, 0.8-20.8) per IRC. Median PFS was 1.3 (95% CI, 1.2-1.4) months (Supplementary Fig. S1); median OS was 7.7 (95% CI, 3.7-14.0) months (Supplementary Fig. S2). The patient with a PR had a fresh biopsy taken within 7 days before treatment start and was found to have *KRAS* mutant MSS CRC and CRC consensus molecular subtype 4 (CMS4), the poor-prognosis mesenchymal subtype.⁸ Although this subtype is associated with TGF- β activation, this was not observed (Fig. 1C). Interestingly, however, the patient had a higher signature score for complement cascade and myeloid-derived suppressor cells (Fig. 1C), indicative of inflammation and immunosuppression in the CMS4 subtype.⁸ This patient had the highest tumor cell PD-L1 expression (20%) amongst the 32 patients, completed 100 weeks of treatment with bintrafusp alfa, and had a duration of response of 8.3 months.

Any grade treatment-related adverse events (TRAEs) occurred in 68.8% of patients; grade 3 occurred in 12.5% (Table 1). The most common TRAEs of any grade were nausea (18.8%), anemia (15.6%), diarrhea (15.6%), and infusion-related reaction (15.6%). No grade 4 TRAEs or treatment-related deaths were reported. One patient had grade 3 enteritis that co-occurred with disease progression, leading to permanent treatment discontinuation.

Discussion

There is a high unmet need for treating MSS metastatic CRC. In phase I study, MSI testing was performed on 50% of enrolled patients, all of whom had MSS CRC. A single PR (duration of 8.3 months) was observed. The ORR was 3.1% per IRC assessment, with a DCR of 6.3%. Current studies of

Table 1. Treatment-related adverse events (TRAE), *N* = 32

	Bintrafusp alfa, <i>n</i> (%)	
	Any grade	Grade 3
Any TRAE	22 (68.8)	4 (12.5)
Nausea	6 (18.8)	0
Anemia	5 (15.6)	1 (3.1)
Diarrhea	5 (15.6)	0
Infusion-related reaction	5 (15.6)	0
Decreased appetite	4 (12.5)	0
Fatigue	4 (12.5)	1 (3.1)
Myalgia	3 (9.4)	0
Pyrexia	3 (9.4)	0
Rash	3 (9.4)	0
Vomiting	3 (9.4)	0
Abdominal pain	2 (6.3)	0
Dermatitis acneiform	2 (6.3)	0
Malaise	2 (6.3)	0
Rash maculopapular	2 (6.3)	0
Stomatitis	2 (6.3)	0
Adrenal insufficiency	1 (3.1)	1 (3.1)
Blood bilirubin increased	1 (3.1)	1 (3.1)
Enteritis	1 (3.1)	1 (3.1)

anti-PD-1 agents suggest that their clinical effect is generally unencouraging in patients with pMMR or MSS CRC.^{9,10} The observed modest antitumor activity of dual inhibition in the present study suggests that simultaneous inhibition of TGF- β and PD-L1 pathways with bintrafusp alfa could not overcome PD-L1 resistance across this patient population. Based on the gene signature profile of the patient who showed a partial response, it is possible that a pre-selected population could benefit from treatment with this dual-targeted immunotherapy, potentially those selected for CMS4 and PD-L1 status. Selection for CMS4 CRC and high PD-L1 status should be tested further in additional trials.

Grade 3 TRAEs occurred in 4 patients (12.5%), and no grade ≥ 4 TRAEs or treatment-related deaths occurred. Bintrafusp alfa had a manageable safety profile in patients with advanced CRC, consistent with that observed in patients with solid tumors⁷ and with what is expected with dual inhibition of TGF- β and PD-L1.

Study limitations include the lack of a comparator arm and the small number of patients, which made it difficult to interpret the magnitude of benefit with bintrafusp alfa. The findings of this study suggest that bintrafusp alfa may play a role in tumor control in select patients; however, further investigation is needed.

Conclusion

Dual inhibition of TGF- β and PD-L1 by bintrafusp alfa demonstrated modest antitumor activity and a manageable safety profile in patients with heavily pretreated, advanced CRC. Further studies are needed to better understand the role of TGF- β and PD-L1 in advanced CRC and identify potential subsets of patients who may benefit from dual inhibition of these pathways.

Acknowledgments

The authors thank the patients and their families, investigators, co-investigators, and study teams at each of the participating centers and at Merck. This study was funded by Merck (CrossRef Funder ID: 10.13039/100009945) and was previously part of an alliance between Merck and GlaxoSmithKline. Medical writing support was provided by Erika Young of Clinical Thinking, Inc, and funded by Merck and GlaxoSmithKline in accordance with Good Publication Practice guidelines (<http://www.ismpp.org/gpp3>).

Conflict of Interest

Michael S. Wertheim served on the speakers' bureau for AstraZeneca, Celgene, and Millennium. Edward J. Kim reports consulting or advisory role at Eisai and served on the scientific advisory board for Taiho, as well as research funding from Bristol Myers Squibb, Astellas, Merck, Eureka Therapeutics, NGM Biopharmaceuticals, Fibrogen, Erytech, AstraZeneca, Medimmune, and Beigene. Benjamin Tan reports institutional research funding from Adaptimmune, Agios, AstraZeneca, Bristol Myers Squibb, Eisai, Exelixis, Merck, Roche/Genentech, Tyme, and Zymeworks. Heinz-Josef Lenz served on the advisory board for Bayer, Bristol Myers Squibb, Fulgent, Merck, MSD, Roche, and Oncocyte. Andreas Machl reports employment with EMD Serono Research & Development Institute, Inc., Billerica, MA, USA, an affiliate of Merck KGaA. Genevieve Jehl and Rena Ito report employment with Merck. James L. Gulley reports that his institute has a Cooperative Research and Development Agreement (CRADA) with Merck, and he is a co-primary investigator on this CRADA but has no personal financial interests and is an unpaid member of the expert oncology faculty that advises Merck. Scott Kopetz reports consulting or advisory role at Amgen, Roche, Bayer HealthCare Pharmaceuticals, Array BioPharma, Merck, Genentech, Symphogen, MSD, Holy Stone, Novartis, Lilly, Boehringer Ingelheim, Boston Biomedical, AstraZeneca/MedImmune, Pierre Fabre, Redx Pharma, Ipsen, Daiichi Sankyo, Natera, HalioDx, Lutris, Jacobio, Pfizer, Repare Therapeutics, Inivata, GlaxoSmithKline, Jazz Pharmaceuticals, Iylon, Xilis, Abbvie, Amal Therapeutics, Gilead Sciences, Mirati Therapeutics, Flame Biosciences, Servier, Carina Biotechnology, Bicara Therapeutics, Endeavor BioMedicines, Numab Pharma, Johnson & Johnson/Janssen, and Karyopharm Therapeutics; institutional research funding from Amgen, Sanofi, Biocartis, Guardant Health, Array BioPharma, Genentech/Roche, Merck, MSD, MedImmune, Lilly, Daiichi Sankyo, and Novartis; and ownership interest in MolecularMatch, Lutris, and Iylon. The other authors indicated no financial relationships.

Author Contributions

Provision of study material or patients: A.S., M.S.W., E.K., B.T., H.-J.L., P.N., P.L.R., J.L.G., S.K. Collection and/or assembly of data: A.S., M.S.W., E.K., B.T., H.-J.L., P.N., P.L.R., J.L.G., S.K. Data analysis and interpretation: A.S., M.S.W., E.K., B.T., H.-J.L., P.N., P.L.R., G.J., A.M., R.I., J.L.G., S.K.

Manuscript writing: A.S., M.S.W., E.K., B.T., H.-J.L., P.N., P.L.R., G.J., A.M., R.I., J.L.G., S.K. Final approval of manuscript: All authors.

Data Availability

Any requests for data by qualified scientific and medical researchers for legitimate research purposes will be subject to Merck's Data Sharing Policy. All requests should be submitted in writing to Merck's data sharing portal (<https://www.merckgroup.com/en/research/our-approach-to-research-and-development/healthcare/clinical-trials/commitment-responsible-data-sharing.html>). When Merck has a co-research, co-development, or co-marketing or co-promotion agreement, or when the product has been out-licensed, the responsibility for disclosure might be dependent on the agreement between parties. Under these circumstances, Merck will endeavor to gain agreement to share data in response to requests.

Supplementary Material

Supplementary material is available at *The Oncologist* online.

References

- Müller MF, Ibrahim AE, Arends MJ. Molecular pathological classification of colorectal cancer. *Virchows Arch*. 2016;469:125-134. <https://doi.org/10.1007/s00428-016-1956-3>
- Cervantes A, Adam R, Roselló S, et al. Metastatic colorectal cancer: ESMO Clinical Practice Guideline for diagnosis, treatment and follow-up. *Ann Oncol*. 2022;S0923-7534(22)04192-8. <https://doi.org/10.1016/j.annonc.2022.10.003>
- National Cancer Institute. *Surveillance, Epidemiology, and End Results Program. Cancer Stat Facts: Colon and Rectum Cancer*. Accessed December 22, 2021. <http://seer.cancer.gov/statfacts/html/colorect.html>
- Mariathasan S, Turley SJ, Nickles D, et al. TGFβ attenuates tumour response to PD-L1 blockade by contributing to exclusion of T cells. *Nature*. 2018;554:544-548. <https://doi.org/10.1038/nature25501>
- Itatani Y, Kawada K, Sakai Y. Transforming growth factor-β signaling pathway in colorectal cancer and its tumor microenvironment. *Int J Mol Sci*. 2019;20:5822. <https://doi.org/10.3390/ijms20235822>
- Lan Y, Zhang D, Xu C, et al. Enhanced preclinical antitumor activity of M7824, a bifunctional fusion protein simultaneously targeting PD-L1 and TGF-β. *Sci Transl Med*. 2018;10:eaan5488. <https://doi.org/10.1126/scitranslmed.aan5488>
- Strauss J, Heery CR, Schlom J, et al. Phase I trial of M7824 (MS-B0011359C), a bifunctional fusion protein targeting PD-L1 and TGFβ, in advanced solid tumors. *Clin Cancer Res*. 2018;24:1287-1295. <https://doi.org/10.1158/1078-0432.CCR-17-2653>
- Guinney J, Dienstmann R, Wang X, et al. The consensus molecular subtypes of colorectal cancer. *Nat Med*. 2015;21(11):1350-1356. <https://doi.org/10.1038/nm.3967>
- Overman MJ, McDermott R, Leach JL, et al. Nivolumab in patients with metastatic DNA mismatch repair-deficient/microsatellite instability-high colorectal cancer (CheckMate 142): results of an open-label, multicentre, phase 2 study. *Lancet Oncol*. 2017;18:1182-1191. [https://doi.org/10.1016/S1470-2045\(17\)30422-9](https://doi.org/10.1016/S1470-2045(17)30422-9)
- Le DT, Uram JN, Wang H, et al. PD-1 blockade in tumors with mismatch-repair deficiency. *N Engl J Med*. 2015;372:2509-2520. <https://doi.org/10.1056/NEJMoa1500596>