

**UCLA**  
**Contemporary Music Score Collection**

**Title**

Entre las grietas

**Permalink**

<https://escholarship.org/uc/item/0054h1jg>

**Author**

Sparrow, Iván

**Publication Date**

2020

# Entre las grietas

Iván Sparrow

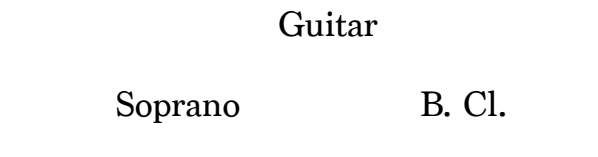
(soprano, bass clarinet, classical guitar)

2014

# Entre las grietas

## Performance Notes

### Stage disposition of performers:



Performers should be standing up and placed close together, with the guitar player facing the audience and soprano and bass clarinet facing each-other.

### Score and performance in general:

The written music consists of a performance score.

Each page has a duration of around 1 minute, with two systems of 30 seconds each. Deviations should not be of more than three or four seconds per system, either way.

Appropriate coordination between performers is important. Time proportions, as well as simultaneous beginnings and endings are to be looked at carefully.

### Soprano and Bass Clarinet:

Regarding pitch-air proportion in sound:

- Black note-heads indicate the ordinary production of pitch.
- White note-heads indicate eolian sound, with heavy air sound and light pitch sound.
- Black and white note-heads indicate a balance between the two.
- Arrows with broken lines indicate the gradual transition between these different sounds.

Solid horizontal lines extending from note-stems indicate the duration of exhaled sounds. Broken horizontal lines indicate inhaled sound duration. The soprano part includes a black and white circle accompanying the inhale line, which means the inhalation is semi-closed, that is, exerting more pressure on the passage of air.

Solid stems indicate either the beginning of a sound or an articulation of the sound. Stems which are not the beginning of a sound and bear no other indication are to be interpreted as a kind of measured slow *vibrato*.

Broken stems serve the purpose of proportional placement.

When no other *vibrato* marking is present within a sound, either a light regular one can be used or none at all.



Rolled and flutter tongue sounds have a scale of intensity or pressure, going from 1 (light) to 3 (heavy). Zero indicates the rolled sound disappears.



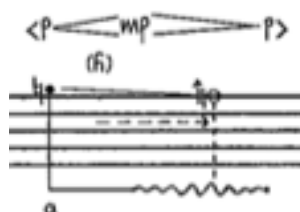
### Soprano:

The quality or timbre of sounds is notated following IPA symbology. Broken lines indicate gradual change from one to another.

Symbols for the articulation of eolian sounds are placed on the top part, in parenthesis. The (~) symbol indicates a gradual but almost immediate change from one kind to another.



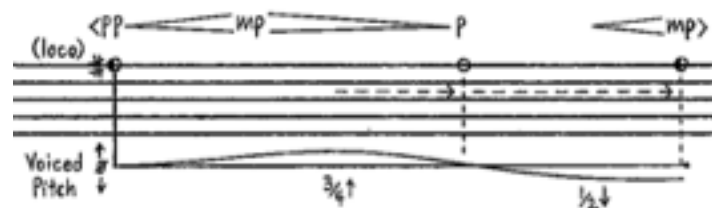
Besides the above-mentioned slow *vibrato* notation, there's one for the common fast vibration, which gradually goes from light to heavy, and *viceversa*.



## Bass Clarinet:

The simultaneous use of the voice with the clarinet sound is sometimes required. It appears through the work notated in different ways according to context:

- One kind of notation shows the voiced sound included in the duration (horizontal) line. The line represents the unison between voice and clarinet sounds. Voiced variations of pitch can go up or down, with indications of quarter- or half-tone differences.



- Other types of voiced notation include the voiced sound with its own pitch, notated in the manner of the bass clarinet, sounding a 9th lower.



## Classical Guitar:

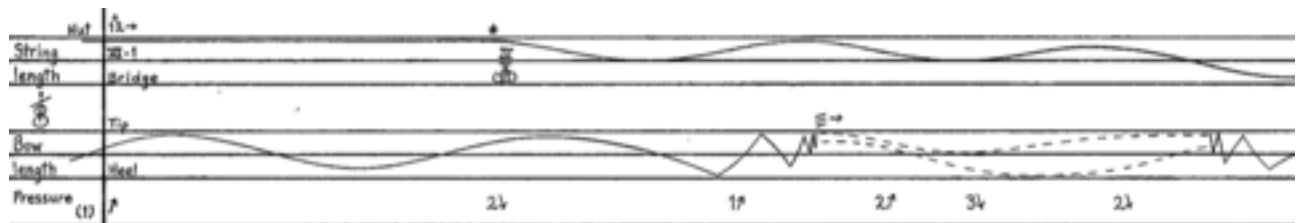
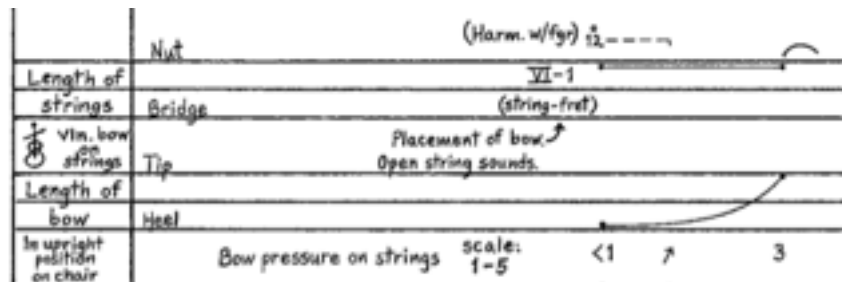
A violin bow and a metallic guitar slide are required for performance.

The guitar is to be placed upright in front of the guitarist (in the manner of a cello), resting and secured on a chair.

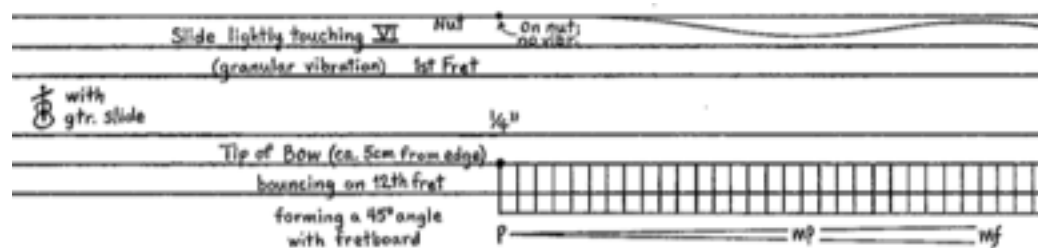
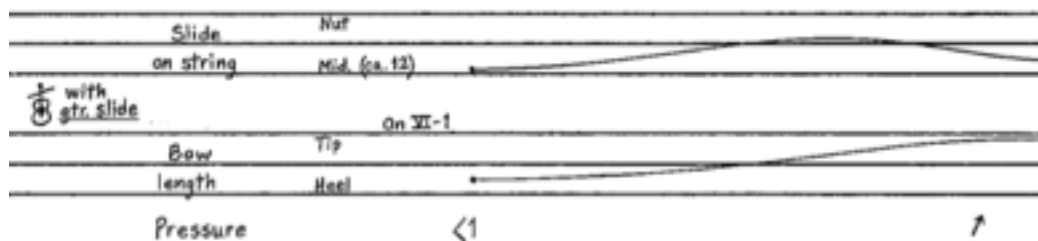
Roman numbers refer to strings, while arabic numbers refer to frets.

The guitar part consists of two staves:

- Sometimes both staves indicate one particular action, that of the movement of the bow on the strings. In such cases, one staff shows the part of the string(s) where the bow is placed (String Length), while the other staff indicates what part of the bow is touching the string(s) (Bow Length). Sometimes the production of a harmonic is added. Also, indications of bow pressure on strings are included in the bottom part.



- Other times, each staff corresponds to one hand (whichever way is more comfortable). While one hand uses the bow, the other one uses the slide.



# Entre las grietas

Iván Sparrow

**Soprano**

**Bass Clarinet Bb (french)**

**Classical Guitar**

Nut (Harm. w/fgr)  $i_2$  -----

Length of strings Bridge  $VI-1$  (string-fret)  $i_2 \rightarrow$  sim.

Vln. bow on strings Tip Placement of bow.  $\nearrow$  Open string sounds.

Length of bow Heel

In upright position on chair

Bow pressure on strings scale: 1-5 <1  $\nearrow$  3 <1 $\nearrow$  2 $\nearrow$  3 $\searrow$  2

**S**

**B.C.I.**

**G**

Nut

Length of strings Bridge  $i_2$  -----  $VI-1$   $IV$   $V$   $(VI)$

Length of bow Heel

Pressure (1-5) <1 $\nearrow$  2 $\nearrow$  3 $\searrow$  2

**S**

<P — mf — P — MP (ord) — P — <PP (f) — MP — PP — mp — vibr.

m — a — a — i — a — a — e

**B.C.I.**

flz. (intensity 1-3) 1↑ 2↑ 3↓ 1 1 2 ↓ Voiced (15ma) 1/2↑

# — <PP — MP — PP — P — MP — P — mf — PP — # — <PP — mp — # — mp —

**G**

String length: Nut, Bridge, Tip, Heel

Bow length: Tip, Heel

Pressure (1-5): (2) ↑ 3↓ 2↓ 1 ↑

**S**

<PP (f) — mp — PP — Unvoiced — u — i — i — y — a — i — a — mp

**B.C.I.**

<PPP — mp — PP — Voiced 2 — 1↑ 2↑ 3↓ — 1↑ 3 —

# — <PP — mp — PP — # — mp — mf — P — mf —

**G**

String length: Nut, i2 →, Bridge, IV (VI), V (VII)

Bow length: Tip, Heel

Pressure (1): ↑ 2↓ 1↑ 2↑ 3↓ 2↓ 1↑ 2↑ 3

[B.C.I. and Gtr. end together]



S: *mp* *p* *<P* *>* *<PP* *mp*  
 (a) a u a y i

B.C.I.: *<PP* *mp* *PP* *<PP* *mp* *PP* *<P* *mp* *P*  
 #0 17 3v 1 8va

G: Slide on string Nut  
 with gtr. slide Mid. (ca. 12)  
 Bow length Tip On VI-1  
 Heel Pressure *<1* *↑* 2

S: *<mp* *p* *mp* *<17* *3v* *1* *<P* *mp* *P* *>* *(h)* *P* *mp* *P*  
 a u a u (h) (f) u i u

B.C.I.: (loco) b 8va 8va  
*<P* *mp* *P* *mp* *P* *<PP* *mp* *P*

G: Nut  
 Slide on strg. Mid.  
 with gtr. slide Tip  
 Bow length Heel  
 Pressure 2 *↑* *3v* 2 *↑* *3v* 2

S:  $\langle PP \rangle \text{---} p \text{---} mp$   
 (s) Unvoiced  
 B.C.I.:  $8va$  (7 $\bullet$ )  
 $\langle mp \rangle \text{---} mf$   
 $\langle mp \rangle$   
 (loco)  $\langle PP \rangle \text{---} mp \text{---} p \text{---} \langle mp \rangle$   
 Voiced Pitch  $\uparrow$   $\downarrow$   
 $\frac{3}{4}\uparrow$   $\frac{1}{2}\downarrow$   
 1 $\uparrow$  2  
 G: Slide on strg. with gtr. slide  
 Nut  
 Mid. Tip  
 Bow length Heel  
 Pressure 2  $\uparrow$  3 $\downarrow$  2 $\uparrow$  4 $\downarrow$  1  $\downarrow$

S:  $mp \text{---} mf \text{---} p \text{---} mp$   
 (s)  
 B.C.I.:  $\langle p \rangle \text{---} mp \text{---} mf$   
 Vibr.  $\frac{1}{4}$ "  
 Slide lightly touching VI (granular vibration) Nut  
 1st Fret  
 with gtr. slide  
 Tip of Bow (ca. 5cm from edge)  $\frac{1}{4}$ "  
 bouncing on 12th fret  
 forming a 45° angle with fretboard  
 $p \text{---} mp \text{---} mf$

S:  $\langle mp \rangle$   $\frac{2}{3}$ "  $p$   $\frac{2}{3}$ "  $mp$   $p$   $\frac{2}{3}$ "  $mp$   $p$

B.C.I.:  $p$   $mf$   $p$   $mp$   $p$   $mf$   $p$   $\langle mp \rangle$   $p$   $f$

G: Slide lightly touching VI with gtr. slide Tip of Bow bouncing on 12<sup>th</sup> fret (mf)

S:  $(p)$   $(\frac{2}{3}"$ )  $(h)$   $a$   $\langle pp \rangle$   $(h)$   $mp$   $pp$   $p$   $pp$   $p$   $mp$

B.C.I.:  $\#o$   $\langle pp \rangle$   $mp$   $pp$   $p$   $pp$   $p$   $mp$

S:  $\langle pp \rangle \xrightarrow{p} \xrightarrow{mp} \xrightarrow{p} \langle p \rangle$   
 B.C.I.:  $\langle pp \rangle \xrightarrow{mp} \xrightarrow{p} \xrightarrow{pp} \langle pp \rangle$   
 G: String length (VI) 1st Fret, Tip, Heel, Pressure (1-5)  
 Nut, Some bow hair on nut (rich in harm.), l.v., sim., At a 45° angle with fretboard, sim.,  $\langle 2 \rangle$ ,  $\uparrow$ ,  $3\downarrow$ , 2, End w/gtr.

S:  $\langle p \rangle \xrightarrow{mp} \xrightarrow{p} \langle p \rangle$   
 B.C.I.:  $\frac{2}{3}''$ ,  $\#$ ,  $p$   
 G: String length (VI) 1st Fret, Tip, Heel, Pressure (1-5)  
 Nut, Bouncing  $\frac{1}{4}''$ ,  $\downarrow$ ,  $\frac{2}{3}''$ ,  $\#$ ,  $p$ , (Pressure)  $\langle 2 \rangle$ , End w/sopr.